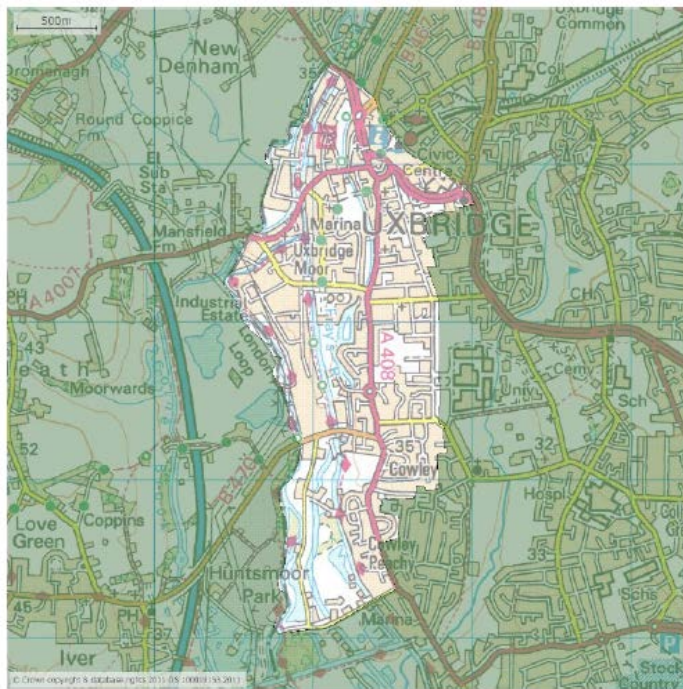




HILLINGDON
LONDON

Uxbridge South Ward Profile



**Performance & Intelligence Team
Administration & Finance**

June 2013

Hillingdon at a glance, 2011

- **Population** – since the 2001 Census, the borough's population has increased by approx 12.7% (from 243,006 to 273,936); in comparison London's population has increased by 13.97% and England by 7.75%. Hillingdon is a relatively dense borough with an average of 23.7 people per hectare; this places Hillingdon in the top 25% of boroughs in England with regards to population density.
- **Gender** – 135,811 of borough residents are male and 138,125 are female.
- **Age** – 20.8% of the borough population is under 16, 6.2% over 75 and 73% aged 16-74 (this is defined in the 2011 Census as working age). The 16-24 age group has increased by 32% since 2001.
- **Ethnicity** - Hillingdon's BAME community has increased from 27% in 2001 to 47.8% in 2011, this is lower than across London (55%) and considerably higher than across England (20%). In absolute figures the BAME population in Hillingdon has increased by almost 100%, 66,762 to 131,020.
- **Religion** - the predominant religions in the borough are Christian – 134,826 (49.2%), Muslim – 29,090 (10.6%), Hindu – 22,025 (8%) and Sikh – 18,232 (6.6%), we also have a large percentage of residents stating 'no religion' – 46,467 (16.9%).
- **Economic activity** – based on statistics for the 16-74 age group there has been very little movement in the % of the population in full time employment, from 80,180 in 2001 to 80,835 in 2011, a difference of 0.8% (655).



1. Barnhill
2. Botwell
3. Brunel
4. Cavendish
5. Charville
6. Eastcote and East Ruislip
7. Harefield
8. Heathrow Villages
9. Hillingdon East
10. Ickenham
11. Manor
12. Northwood
13. Northwood Hills
14. Pinkwell
15. South Ruislip
16. Townfield
17. Uxbridge North
- 18. Uxbridge South**
19. West Drayton
20. West Ruislip
21. Yeading
22. Yiewsley

Uxbridge South Ward

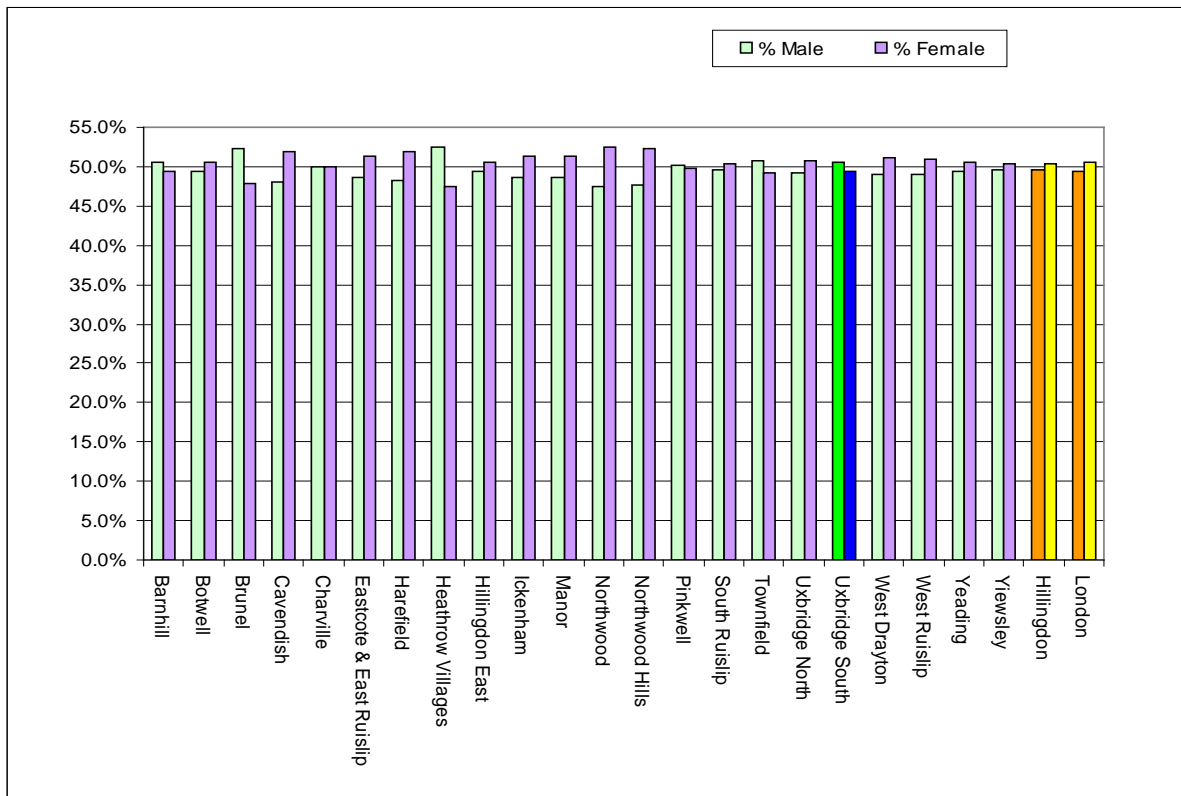
Uxbridge South lies in the West of Hillingdon and is bordered by Uxbridge North, Brunel ward and Yiewsley as well as the county of Buckinghamshire.

Uxbridge South ward **population** is 13,979 residents, an increase of 22.2% since 2001 (11,438). This is higher than the 12.7% increase for Hillingdon as a whole and is one of the largest increases in population in the Borough.

Uxbridge South is one of the more densely populated wards in the Borough with 44.8 persons living per hectare. The average number of people per household is 2.8.

The proportion of **men to women** in the ward shows that there is a higher percentage of men to women 50.5% to 49.5%. This is a small change from 2001 when there was a 50.8% to 49.2% female to male ratio in the ward.

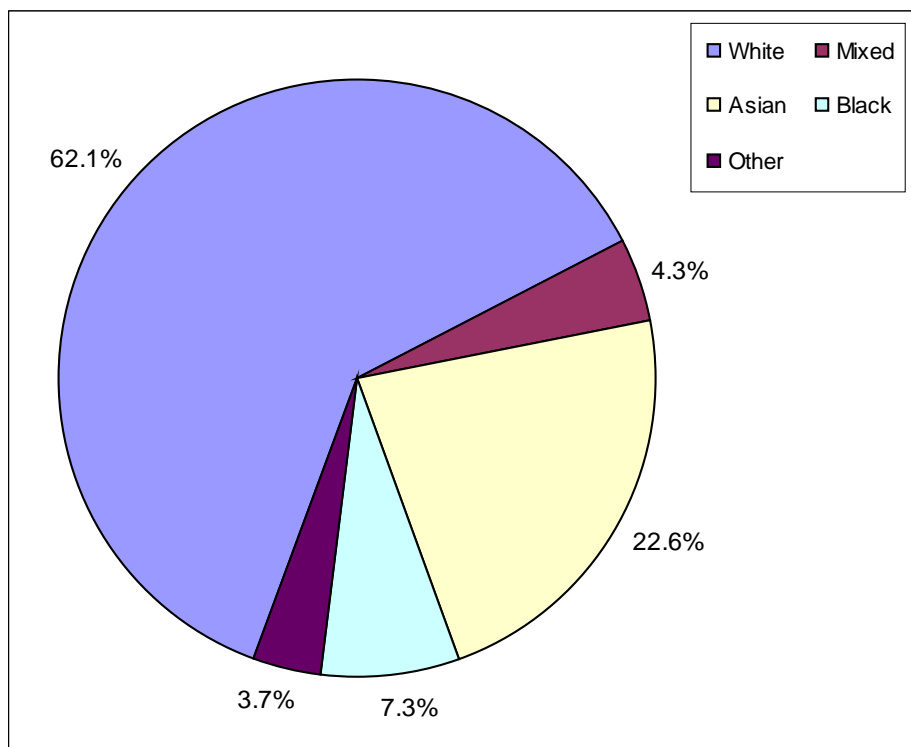
The chart below shows male/female ratios in Hillingdon, London and ward level:



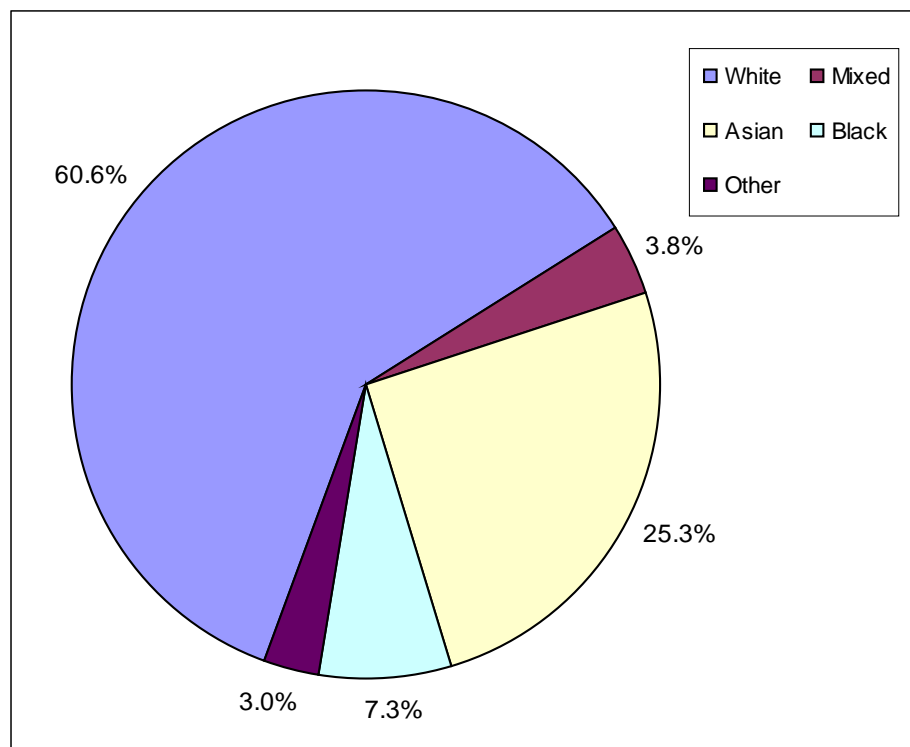
Ethnic make up

62.1% of residents identify themselves as White British background (this includes English, Northern Irish, Scottish, Welsh, Irish, Gypsy or Irish Traveller and Other White). 4.3% from Mixed / Multiple Ethnic groups, 22.6% from Asian / Asian British background (including Indian, Pakistani, Bangladeshi and Chinese), 7.3% from Black / African / Caribbean / Black British backgrounds and 3.7% from other ethnic backgrounds (including Arab).

Uxbridge South, Ethnic make up 2011:



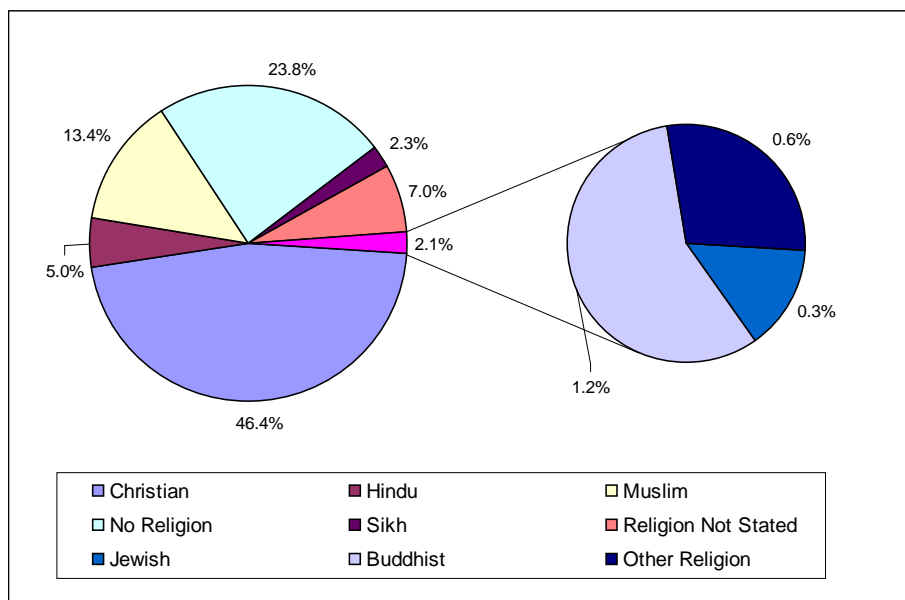
Hillingdon, Ethnic make up 2011:



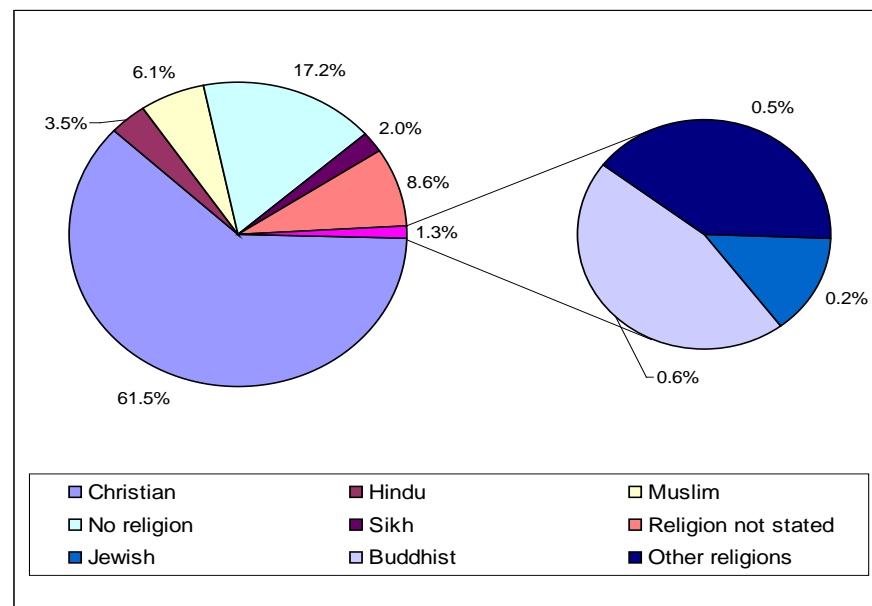
Religion

Christianity is the predominant religion in the ward with 46.4% from this faith. 5% are Hindu, 13.4% Muslim, 2.3% Sikh, with 23.8% having no religion. 7% chose not to state a religion (the question was voluntary). The charts below show the complete breakdown for the ward, together with a comparison with the 2001 census:

Uxbridge South, Religion 2011:

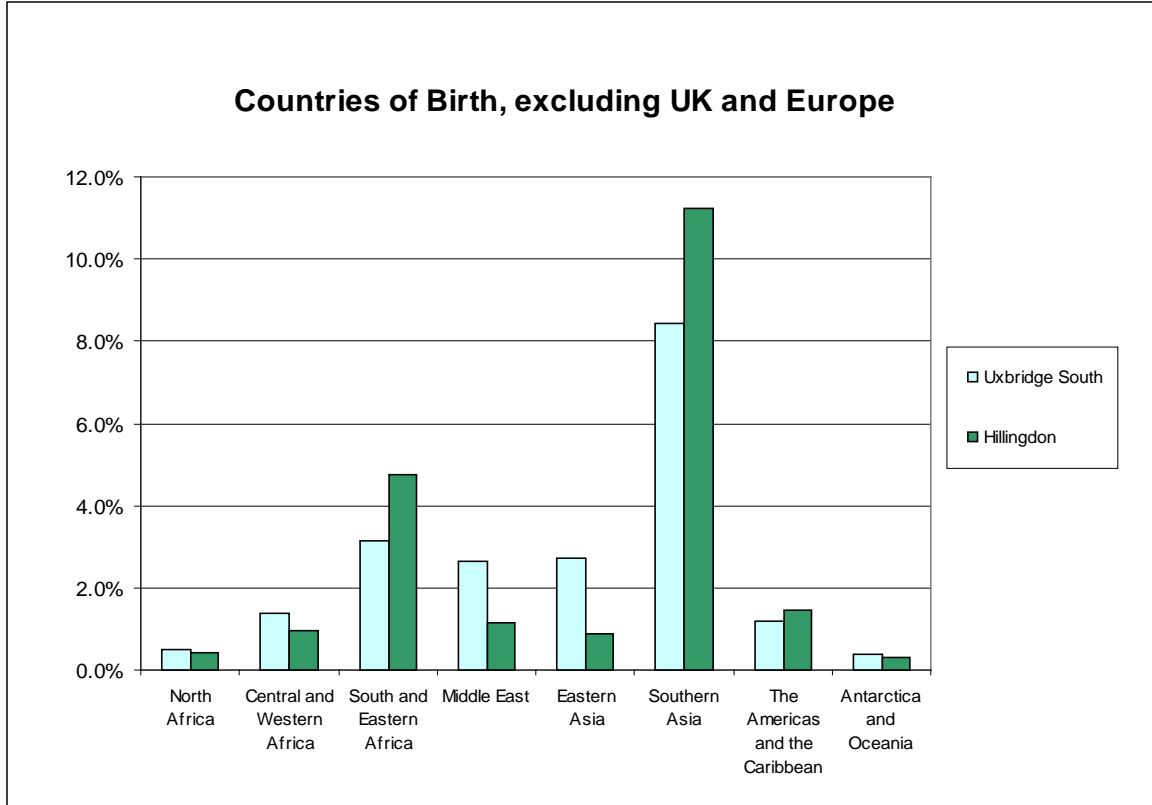


Uxbridge South, Religion 2001:



Country of Birth

78% of Uxbridge South ward were **born** in Europe (with 69.1% born in the UK), 15.4% in the Middle East / Asia, 5% in Africa, and 1.6% in the Americas, Caribbean and Australasia.



With Brunel University in the ward Uxbridge South has the highest percentages of residents in the Borough born in EU countries including Germany, Italy, Spain and France. The ward also has the highest number of residents giving their country of birth as the Middle Eastern countries, Eastern Asia, China, Hong Kong, Bangladesh and Iran.

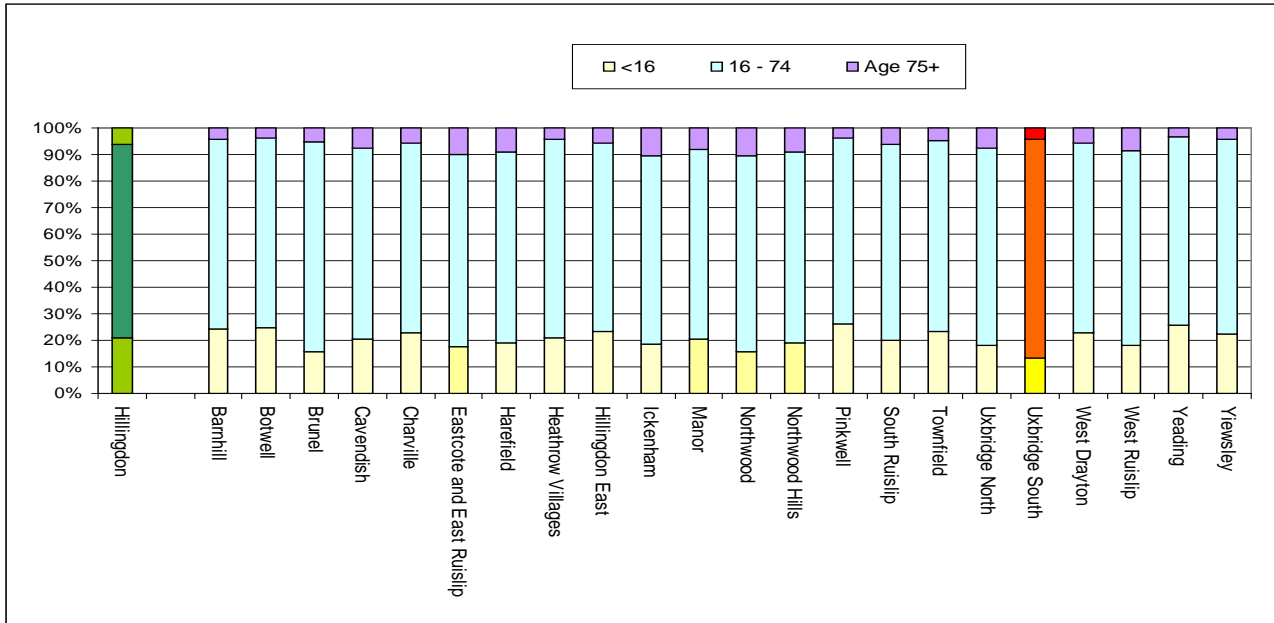
The preferred **language** in the ward is English with 79.9% residents stating this at their main language. Of the remaining 20.6% the majority (17.9%) speak English 'very well' or 'well'. 63 residents state that they cannot speak English well, with only 18 residents (0.5%) stating they cannot speak English at all¹.

Over 65 identified languages are spoken in this ward, spanning European languages, South and East Asian languages and African languages². Apart from English the most spoken language in the ward is Chinese spoken by 270 or 2% of residents aged over 3. Other languages spoken are Panjabi (by 1.6% of residents, Arabic, by 1.6% of residents, Bengali, by 1.5% of residents. 1,872 residents (13.8% speak a range of remaining languages)

¹ this is based on residents aged 3 and over (for Uxbridge South this is 13,530 residents)

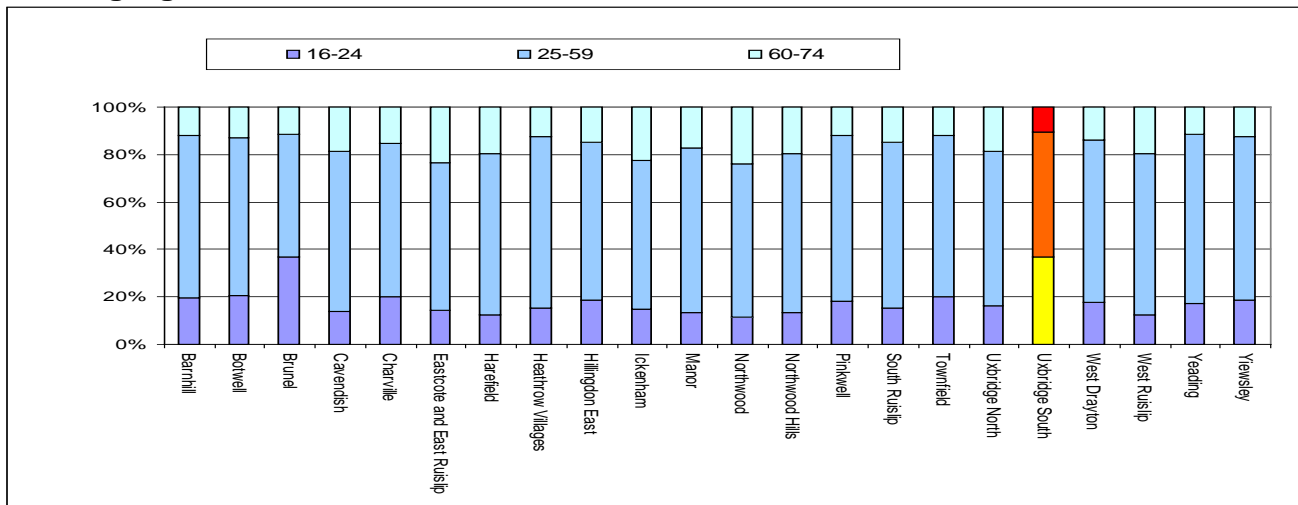
² South Asian Languages include Urdu, Hindi, Panjabi, Pahari, Bengali, Gujarati, Marathi, Telegu, Tamil, Malaysian, Sinhala and Nepalese

Age breakdown of ward 2011:



13.26% of the residents in Uxbridge South are under the age of 16; this is the lowest number of Under 16s in any ward in the Borough. 82.25% (11,498) of residents are of working age (defined as aged 16-74) and this is the highest percentage of working age residents of any ward in the Borough. The remaining 4.49% of residents are over the age of 75

Working Ages Breakdown



In Uxbridge South 82.35% of residents are classed as of working age (16 – 74 years old). The 16-24 years group makes up 30.4 % (4,250) of this group and has increased from 20.6% (2,352) in 2001. Only 9.3% of working age residents are aged 60-74 in Uxbridge South, which is one of the lowest in the Borough. The remainder 43.1% (6018) are aged between 25 and 59.

Brunel University spans both Brunel and Uxbridge South wards, and since 2006 (for the first time in 25 years, and since the 2001 Census) the university is now based on one campus, explaining the increase in population due to increased student numbers now based here (source, Brunel University website 'about Brunel' section)

Economic Data (statistics are for the 16-74 age group)

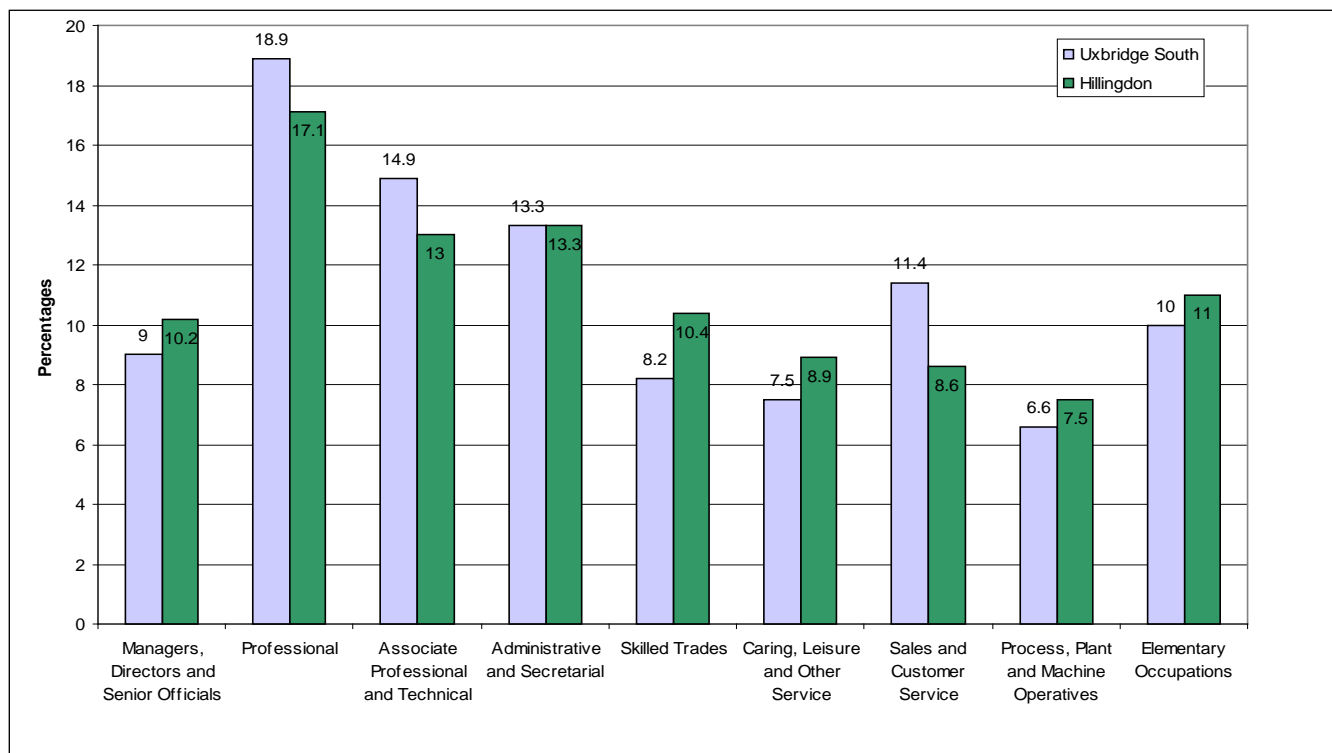
In Uxbridge South 60.9% of residents of working age are economically active. This represents a reduction from the Census figures of 2001 and is below the Borough average of 70.7%. This is due to the numbers of students resident in the ward.

The table below provides a breakdown of economic activity in the ward.

| Sub Group | Uxbridge South 2011 | Uxbridge South 2001 | Hillingdon 2011 |
|--------------------------------------|---------------------|---------------------|-----------------|
| Employee: Part-time | 7.5% | 8.1% | 11.90% |
| Employee: Full-time | 31.1% | 42.6% | 40.40% |
| Self-employed | 5.9% | 5.8% | 9.30% |
| Unemployed | 3.6% | 2.6% | 4.30% |
| Full-time student | 12.9% | 7.6% | 4.80% |
| Total - Economically active | 60.9% | 66.7% | 70.7% |
| Retired | 7.3% | 8.8% | 10.20% |
| Student | 23.9% | 13.0% | 8.40% |
| Looking after home or family | 3.5% | 5.1% | 5.20% |
| Long-term sick or disabled | 2.5% | 3.7% | 2.90% |
| Other | 1.9% | 2.7% | 2.50% |
| Total - Economically inactive | 39.1% | 33.3% | 29.3% |

Occupation Types

The chart below provides an overview of the Occupation Types across the Uxbridge South ward, with a comparison with Hillingdon Borough.



⁴ for a breakdown of occupations, refer to the Glossary.

Households

In March 2011, there were 4,908 **households**, an increase of 1.6% in the ward from 2001 (4,829 households), this is less than the overall borough increase of 3.7% and significantly less than the increase in London of 8.2% and England of 7.9%.

The majority of **households** in the ward (59.8%) are comprised of one family², with a further 14.2% being a one person household, and 26.1% other household type (ie 'all full time students' or 'all aged over 65'). There are 29 communal establishments within the ward, housing 2,218 residents (15.87%) – this is accommodation connected with Brunel University and Hillingdon hospital.

The majority of **housing types** within the ward are houses or bungalows (either detached, semi or terraced) at 60%, with 39.4% being flats or maisonettes (including those in a commercial building).

49.5% of ward residents either own their own property outright (21.2%) or own with a mortgage or loan (28.3%). 25.3% of properties are privately rented, with 22.2% socially rented from the Council or other; the remaining residents are shared ownership (1.9%) or living rent free (1.1%)

¹ one family is defined as either a married couple, co-habiting couple, same sex civil partnership couple with dependent or non-dependant children or with no children, or a lone parent with dependant or non-dependant children.

Glossary

What is a Ward Profile - a Ward Profile is designed to provide economic and social data for each ward based on 2011 Census data, and provides an understanding of an area to assist with local service planning.

Occupation types

- Managers, Directors and Senior Officials includes
 - Corporate Managers and Directors
 - Other Managers and Proprietors
- Professional Occupations include
 - Science, Research, Engineering and Technology Professionals
 - Health Professionals
 - Teaching and Educational Professionals
 - Business, Media and Public Service Professionals
- Associate Professional and Technical Occupations includes
 - Science, Engineering and Technology Associate Professionals
 - Health and Social Care Associate Professionals
 - Protective Service Occupations
 - Culture, Media and Sports Occupations
 - Business and Public Service Associate Professionals
- Administrative and Secretarial Occupations includes
 - Administrative Occupations
 - Secretarial and Related Occupations
- Skilled Trades Occupations
 - Skilled Agricultural and Related Trades
 - Skilled Metal, Electrical and Electronic Trades
 - Skilled Construction and Building Trades
 - Textiles, Printing and Other Skilled Trades
- Caring, Leisure and Other Service Occupations
 - Caring Personal Service Occupations
 - Leisure, Travel and Related Personal Service Occupations
- Sales and Customer Service Occupations
 - Sales Occupations
 - Customer Service Occupations
- Process, Plant and Machine Operatives
 - Process, Plant and Machine Operatives
 - Transport and Mobile Machine Drivers and Operatives
- Elementary Occupations
 - Elementary Trades and Related Occupations
 - Elementary Administration and Service Occupations

Links to pages on useful websites

- [Councillor Details](#)
- [Member of Parliament for Uxbridge South](#)
- [Find my nearest](#)
- [NOMIS \(official labour market statistics\)](#)
- [Ward level well-being scores \(GLA\)](#)
- [Ward profiles \(GLA\)](#)