

# HILLINGDON people

News from your council

[www.hillingdon.gov.uk](http://www.hillingdon.gov.uk)

September/October  
2025



## Could you foster?

Page 16

**Call for  
fairer funding**

Page 9

**Improving  
homes**

Page 10

**Recycle the  
right way**

Page 12



HILLINGDON  
LONDON

# Secondary School Admissions

Do you have a child born between **1 September 2014 and 31 August 2015?** If so, you must apply for a school place by **31 October 2025**

For more information, key dates, how to apply and advice, visit [www.hillingdon.gov.uk/schooladmissions](http://www.hillingdon.gov.uk/schooladmissions) or email [admissions@hillington.gov.uk](mailto:admissions@hillington.gov.uk)





[www.hillingdon.gov.uk](http://www.hillingdon.gov.uk)

## Contents

- 9 Call for fairer government funding**  
Council urges action on asylum pressures.
- 10 Improving our housing stock**  
Find out how we're enhancing tenants' homes.
- 12 Are you recycling right?**  
Read how small changes can have a big impact.
- 14 Revitalising your town centres**  
Plans to boost the borough's high streets.
- 16 Could you foster?**  
A local mum and daughter share their journey.
- 25 Gain exclusive access to the past**  
New heritage membership launches.



We've aligned stories in this magazine to our Council Strategy to keep you updated on our progress. Below is a key to explain the graphics.



## Stay connected

Sign up to our e-newsletters now at [www.hillingdon.gov.uk/enews](http://www.hillingdon.gov.uk/enews)

## Follow us



## Welcome



In this edition, we've highlighted a range of examples of how the council is working to keep you safe and protect the borough's best interests.

At the time of writing, our legal team is reviewing the specifics of the recent High Court decision regarding the housing of asylum seekers at the Bell Hotel in Epping and whether the same considerations apply in Hillingdon.

As we consider the best interests of our borough, it is crucial to evaluate the potential impact of government responding to hotel closures by placing asylum seekers in Houses of Multiple Occupation or other private rented housing in the borough which could reduce available housing for residents. The only real solution is for the government to stop the boats.

The council has consistently challenged governments of both political colours and will continue to do so where their decisions unfairly burden Hillingdon, including judicial reviews on asylum decisions impacting the borough as well as seeking the recovery of support costs, which continue to place an unfair burden on local taxpayers (see page 9).

Hillingdon is a tolerant and diverse borough, and the safety and security of all residents is central to our approach. We are committed to ensuring that the current situation does not cause tension within our communities.

The ongoing demand for housing nationally is creating unsustainable financial pressures for local authorities, including Hillingdon, and we also recently urged the Ministry of Defence to partner with us to restore their abandoned military homes for local residents and address the impact of empty properties on the community (see page 7).

This summer, we reaffirmed our strong opposition to Heathrow expansion. We will continue to ensure the borough is safeguarded from these illogical proposals, which come at both a high cost to residents, both monetarily and physically, not only exacerbating noise and air pollution, but also destroying homes and historic communities and significantly impacting local infrastructure.

I am also calling on the Mayor of London to reverse his nonsensical plan to close the front counter at Hayes Police Station. This follows closely on the heels of the closure of Uxbridge's counter, despite broken promises that it would remain open. Read more on page 5.

Cllr Ian Edwards,  
Leader of the Council

**On the cover:** Foster mum Sophia Abdulkadar with her foster child

**Advertising deadline for next edition:**  
Friday 3 October

**Editorial and advertising enquiries:**  
t: 01895 556903  
e: [hillingtonpeople@hillington.gov.uk](mailto:hillingtonpeople@hillington.gov.uk)  
w: [www.hillingdon.gov.uk/hillingdonpeople](http://www.hillingdon.gov.uk/hillingdonpeople)

Published by Hillingdon Council © 2025

Hillingdon People, 3E/01 Civic Centre, High Street, Uxbridge, UB8 1UW

Design: Corporate Communications

Printed by: William Gibbons & Sons Ltd



When you have finished with this magazine please recycle it.

Products and services advertised in this magazine are not necessarily endorsed by the council.

For a copy in large print or as an audio version call 01895 556903

## Subscribe to our garden waste collection service

2025/26

Sign up now at [www.hillingdon.gov.uk/garden-waste](http://www.hillingdon.gov.uk/garden-waste)

**Weekly collections** (except winter)

**Three sack capacity (270 litres)**

**£70 annual fee**

Sign up now




[www.hillingdon.gov.uk](http://www.hillingdon.gov.uk)

## Families get top tips to support their children's dental health



Almost 1,000 children and their parents took part in workshops and fun sessions promoting good oral health and wellbeing during the council's National Smile Month events this summer.

Our teams held more than 320 one-to-one sessions, providing oral health advice to families. They welcomed an equal number of attendees at Brush for Life workshops at our children's centres and family hubs, raising awareness about the benefits of daily cleaning routines and a healthy diet.

Events included outdoor games and activities in Pinkwell Park (pictured below), an online



Navgot and her child Harveer at a workshop in Hayes

'brushathon', a special dental health-themed storytime at Botwell Green Library and a fun brushing event at Charville Children's Centre.

In addition, the team shared brushing tips and oral health information with more than 200 people at the Mayor's Picnic in the Park at Cowley Recreation Ground in June.

More than 600 NHS health visitor reviews also took place, where staff worked with parents, carers and families to promote

children's health and wellbeing, with oral health advice provided during these visits at our children's centres.

**Aqsa Arooj, from Hayes,** said: "I found the toothbrushing information really useful. I didn't realise how important it is to brush baby teeth. My daughter Irha now brushes her teeth twice a day."

**Cllr Jane Palmer, Cabinet Member for Health and Social Care,** said: "We're working with our partners to tackle levels of tooth decay among children in the borough, particularly those from birth to five-years-old, and it was fantastic to see so many families getting involved in our National Smile Month events."

Access dental support:

[www.hillingdon.gov.uk/cc-services](http://www.hillingdon.gov.uk/cc-services)



## Connecting local communities through digital inclusion initiatives



The council's ambitious digital strategy is making a difference to residents' lives by providing free laptops and training to those on low incomes who want to do more online but do not have access to a device.

Since the initiative began in October 2024, 130 refurbished laptops – previously used by council staff and made available through the organisation's routine device refresh programme – have been donated to nominated residents. This approach ensures the council makes the most of existing resources while promoting digital inclusion and helping residents connect with online services, continue learning and explore job opportunities.

Since receiving his laptop, **Kerry Smith, aged 76, from Uxbridge** (pictured above right), has



enrolled on an adult education IT course to sharpen his skills.

He said: "I was so grateful to receive my laptop, it was a very pleasant surprise. The training sessions have been important in helping me explore more about what I can do.

"As a member of the sheltered housing forum, having the laptop has made it much easier to find out more information about what is going on across the council

and raise this in meetings, and share with others."

**Cllr Martin Goddard, Cabinet Member for Finance and Transformation,** said: "The council's £9 million investment in its digital strategy is not just about technology; it's about creating more equitable and connected communities through digital inclusion.

"The laptop donations, and Learn Hillingdon IT courses, support our ambition to make it easier for residents to access online services."

Council officers submit an expression of interest form for the laptop donation scheme on behalf of eligible residents.

Get online today:

[www.hillingdon.gov.uk/digital-everyone](http://www.hillingdon.gov.uk/digital-everyone)



## Concerns raised over Heathrow expansion

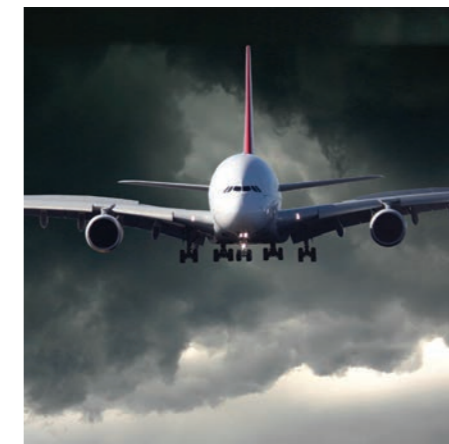


The council has restated its firm opposition to Heathrow Airport Limited's revived plans for a third runway, describing the proposal as illogical, undeliverable, and deeply damaging to local communities.

Despite 25 years of opposition – including from the council – Heathrow continues to push a scheme that would increase noise and air pollution, threaten homes and green spaces, and overwhelm local infrastructure. These serious impacts have been glossed over in the latest proposals.

In July, a council officer attended parliament's Environmental Audit Committee, stressing the need for fair decision-making based on strong evidence about the harms of air quality and noise.

**Leader of the Council, Cllr Ian Edwards,** said: "The government's apparent intention to rush through a decision on Heathrow expansion is deeply concerning.



Fast-tracking such a high-impact project greatly increases the risk of yet another costly mistake. This has all the hallmarks of becoming HS2 2.0 and our communities should not pay the price for another hasty decision.

"Hillingdon already bears the brunt of Heathrow's operations. We will not stand by while the government and airport attempt to impose further disruption on our communities."

## Expanding our in-borough care facilities



A care home has been purchased by the council to help meet the growing demand for residential care and reduce the borough's reliance on costly private provision.

The Hillingdon Care Company, established and owned by the local authority, will manage The Burroughs in West Drayton, marking a strategic step to secure long-term provision and manage bed availability in-house.

This acquisition will give the council greater control over capacity, ensure a sustainable supply of places for the future, and maintain high standards of care for residents.

**Cllr Jane Palmer, Cabinet Member for Health and Social Care,** said: "Bringing this care home into council ownership is a forward-thinking step that allows us to provide high quality, affordable care, right here in Hillingdon.



The Burroughs, West Drayton

"By investing in our own provision, we're reducing reliance on external providers, managing rising costs, and creating a more sustainable care system for the future."

Cabinet agreed to purchase the home, previously run by Care UK, at its meeting in December. It will be registered and inspected by the Care Quality Commission.

Explore care support:

[www.hillingdon.gov.uk/care-homes](http://www.hillingdon.gov.uk/care-homes)



## Proposed Hayes Police Station closure condemned



In July, the council criticised the planned closure of the front counter at Hayes Police Station and called on the Mayor of London, Sadiq Khan, to reverse the decision.

The move, along with previous closures in the borough, including Uxbridge Police Station, where there had been a promise to reopen the facility which has not been met, would leave the entire borough without face-to-face police services. This would force residents to travel to Acton or Hounslow.

The council is concerned that this will place additional pressure on neighbourhood policing teams and is urgently calling on the Mayor to reverse his decision.



**Cllr Edwards** said: "This proposal would leave our borough without any accessible police services.

"Hillingdon is one of London's largest boroughs, and our communities deserve the same level of safety and service as anywhere else.

"Under the current proposals, residents would need to travel to Acton to access their nearest police counter. This also means that those required to report to a police station for bail conditions are less likely to do so, which would require already limited police resources to trace them."

Watch Cllr Edwards' video: [www.hillingdon.gov.uk/hayes-station-closure](http://www.hillingdon.gov.uk/hayes-station-closure)



## Festival of activities for older people



Throughout October, the council will host an expanded event offering free activities, information, and support for the borough's older residents.

Our new Age-Friendly Festival replaces the annual Day of the Older Person, usually held each autumn at Uxbridge's Pavilions Shopping Centre.

Instead of a single location, events will take place at libraries and other venues boroughwide, giving more people the opportunity to take part and experience a broader programme.

Enjoy health fairs, taster sessions, and advice stalls at libraries and venues across Hillingdon with music, workshops, and activities.

Smaller events will also run at various sites, including a falls prevention talk, a daytime disco and a reminiscence event at the Battle of Britain Bunker.

Discover what's on:  
[discover.hillingdon.gov.uk/age-friendly-festival](https://discover.hillingdon.gov.uk/age-friendly-festival)



## Let Hillingdon host your special day



The Civic Centre's new Astra Suite

Alongside its move to a new part of the Civic Centre, the council's Register Office has re-launched the range of ceremonies it offers, including weddings, civil partnerships, vow renewals and baby naming ceremonies.

The new, modern facilities cater for up to 20 guests in the Nova Room, and up to 80 in the Astra Suite.

Whether you want an intimate wedding, civil partnership or a larger celebration, the new

ceremony rooms offer an elegant and unique space for you to enjoy with your loved ones.

To find out more or view the new ceremony spaces before booking, visit us from 9am to 4pm on weekdays.

Book now:  
[www.hillingdon.gov.uk/ceremony-venues](https://www.hillingdon.gov.uk/ceremony-venues)



## New homes and library for Yiewsley



Work is continuing on the first phase of construction of the council's Yiewsley redevelopment project, which will create 95 homes (100 per cent affordable) and new community facilities.

Progress at Otterfield Road includes the excavation of foundations, installation of ground beams and connection of drainage systems.

Ground surveys at Falling Lane are complete, clearing the way for the demolition of Yiewsley Library at the end of October. This will make space for a new library and community space at Otterfield Road.

The existing library is scheduled to close on Friday 3 October. To minimise disruption, nearby West Drayton Library will extend its opening hours, including Mondays, lunchtimes and an extra evening.

The redevelopment will deliver a mixture of one, two and three-bed homes; 45 at Otterfield Road and 50 at Falling Lane, alongside park improvements at Yiewsley Recreation Ground which are underway.

Construction at Otterfield Road is expected to complete in early 2027 and Falling Lane by summer 2027.



Foundations being dug at the Otterfield Road site

Stay up to date:  
[www.hillingdon.gov.uk/yiewsley-redevelopment](https://www.hillingdon.gov.uk/yiewsley-redevelopment)



## Call for government to bring empty military homes into use



The council is in discussions with the Ministry of Defence (MoD) to encourage them to work in partnership to restore vacant and neglected military homes to address housing shortages in the borough.

There are currently 108 vacant MoD homes in the borough, with 26 allocated for service families, leaving 82 currently unoccupied.

Since last October, the council has been attempting to engage with the MoD and is concerned about the deteriorating condition of these properties, which has been raised by residents, as well as the negative impact on the community caused by the presence of long-term vacant

and dilapidated homes. The public has the expectation that the MoD integrates its approach with the council and the community to ensure these homes don't tarnish the wider area.

Like other London boroughs, Hillingdon has seen a significant increase in the demand for housing. There are currently more than 1,500 households in temporary accommodation, and on average, the council receives 100 new homeless applications each week.

To urgently address the shortage of affordable homes, the council is working to acquire empty homes

through the purchasing or leasing of properties.

The opportunity to work with the MoD and survey the properties available would enable the council to establish the work needed to bring them back into use for residents.

The council has asked the MoD to confirm how many properties are unavailable due to disrepair or ongoing works, how many have no plans for reoccupation or redevelopment, and whether the MoD will consider working with the council to bring these properties, or a portion, back into use.

**Cllr Steve Tuckwell, Cabinet Member for Planning, Housing and Growth**, said: "We want to work constructively with the MoD to identify practical and sustainable solutions to the housing pressures we're facing. All government departments have a responsibility to do everything they can to reduce homelessness, and the MoD cannot be exempt from this duty."

## Council to explore tightening local controls on HMO landlords

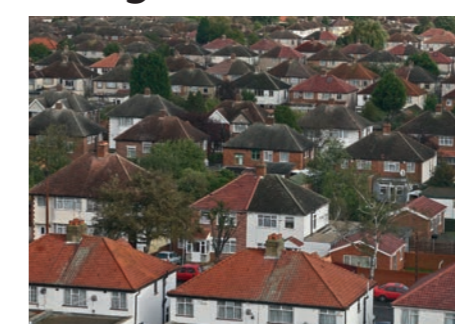


On Thursday 24 July, Cabinet agreed to develop a plan assessing whether additional licensing rules for Houses in Multiple Occupancy (HMOs) are needed to better protect residents.

If supported by evidence, enhanced licensing would allow the council to address issues, including rogue landlords, poor quality housing, safety conditions and anti-social behaviour (ASB).

Private renting in Hillingdon rose by 7.8 per cent between 2011 and 2021, the second-highest increase in London. Residents have raised concerns about the growth of HMOs, prompting a Full Council motion in July 2024 to explore if the implementation of additional licensing would be justified.

Currently, the council operates a mandatory licensing scheme for large HMOs – properties occupied



by five or more residents from two or more households who share bathroom or kitchen facilities.

An additional scheme could extend to smaller properties, specifically those occupied by three or four residents from two or more households sharing a kitchen or bathroom, which are not already covered by the existing scheme.

The council is conducting a Housing Tenure Survey to determine if further regulation is justified. If so, a public

consultation could begin in the autumn.

**Cllr Steve Tuckwell, Cabinet Member for Planning, Housing and Growth**, said: "For many residents in our borough, HMOs can offer an affordable and flexible housing option.

"However, where they are poorly managed, they can harm the quality of life for neighbours and tenants alike. Hillingdon will always put its residents first, and these additional licensing measures would give us the tools to hold landlords to account – protecting tenants, safeguarding neighbourhoods, and raising housing standards."

Report unlicensed HMOs or concerns:  
[www.hillingdon.gov.uk/hmo](https://www.hillingdon.gov.uk/hmo)



## Stallholder sentenced for selling dangerous electrical lamps

A market trader has been sentenced to 60 hours of unpaid work and ordered to pay more than £2,000 for selling unsafe electrical lamps in Uxbridge following a successful prosecution by the council's trading standards team.

Yilmaz Bozkaya, 48, of Warwick Road, Carlisle, pleaded guilty to three offences contrary to the Electrical Equipment (Safety) Regulations 2016 when he appeared at Uxbridge Magistrates' Court on Tuesday 15 July.

In addition to the community order, he was ordered to pay a £2,000 contribution towards prosecution costs, and victim surcharge of £114.

Council officers uncovered 56 unsafe lamps being sold by Bozkaya at his Uxbridge Christmas market stall in 2023.



Investigations revealed the products were poorly constructed with non-British standard plugs (pictured above). The electrical supply cords were not securely attached to the lamps, and there was access to live parts, posing a risk of electric shocks or fires.

The unsafe lamps also had inadequate labelling of technical

specifications, insufficient instructions for safe use and no manufacturer information.

**Cllr Eddie Lavery, Cabinet Member for Community and Environment**, said: "Our trading standards team will not hesitate to protect the public and take action against individuals selling unsafe products in our borough. Selling faulty electrical items can have serious consequences and I'm glad these items are no longer on our streets."

For more information, or to report a business you suspect is selling unsafe or illegal products, email [tradingstandards@hillington.gov.uk](mailto:tradingstandards@hillington.gov.uk).

For other consumer-related issues, contact the Citizens Advice Consumer Service on 0808 223 1133.

## Fraudster sentenced for submitting false housing application



Amira Issa, 41, of Tustin Estate, Southwark, received a six-month custodial sentence, suspended for 12 months at Ealing Magistrates' Court on Friday 1 August after being found guilty of two offences under the Fraud Act 2006 at an earlier hearing in June.

She was also ordered to pay £6,167 to the council, a victim surcharge of £154 and

attend 20 Rehabilitation Activity Requirement days.

In February 2021, Issa applied to the council for a new home, explaining that her housing association property on Wraysbury Drive, Yiewsley, where she had lived since 2009, had become overcrowded.

When a housing application is submitted, the council's fraud team conducts multiple checks to confirm its legitimacy. Providing false information on a housing application is an attempt to obtain services or property through deception and is classed as fraud.

Despite providing details that her living situation in the borough had changed and she required a council home, it was held by the court that at no point did she state that she had been residing away from the Yiewsley property for some time.

In sentencing, Issa's defence stated the offence was not

motivated by personal gain and that she had been attempting to help an ex-partner gain a tenancy as he had failed the initial checks.

However, magistrates took into account the cost incurred by Hillingdon taxpayers for the investigation, as well as the sustained dishonesty for a considerable period, ruling that she intentionally misled the authority.

**Cllr Martin Goddard, Cabinet Member for Finance and Transformation**, said:

"Our counter fraud and legal teams work hard to thoroughly investigate all applications, and we won't hesitate to pursue legal action against anyone who seeks to take advantage of services and swindle the public purse."

**Report fraud:**  
[www.hillingdon.gov.uk/report-fraud](http://www.hillingdon.gov.uk/report-fraud)



# Call for fair funding and refund of borough's asylum support costs

In response to insufficient government funding for Hillingdon's asylum and immigration responsibilities, the council continues to advocate for change and is seeking reimbursement of the £21 million it will have spent by the end of the financial year.

The council is currently subsidising these extra costs as a result of increasing evictions from Home Office hotel accommodation, with the expectation that it will provide support, placing an unfair financial burden on residents.

This, alongside soaring demand for services and significant underfunding for a number of years, is creating unsustainable financial pressures.

We continue to call for support to address the extraordinary number of former asylum seekers in our borough whom we are required by law to support.

### The urgent need for fairer funding

We are once again urging the government to address its funding formula, as their Fairer Funding Review recognises that the council has been underfunded for a number of years.

Like many councils, Hillingdon is under significant financial strain due to rising inflation and escalating demands in social care and housing.

Efforts are already underway to mitigate the unprecedented financial pressures, including

the continued delivery of the council's Finance Modernisation Programme and 2025/26 savings programme.

Despite these challenges and financial pressures, the council continues to invest in and provide high quality services, while charging as little as possible to residents, in comparison to other local authorities. Hillingdon's council tax is the second lowest out of the 20 outer London boroughs.

### Addressing asylum pressures

At a Full Council meeting in July, Leader of the Council, Cllr Ian Edwards, urged local MPs to work with the government to secure immediate funding to cover the costs already incurred in providing support to former asylum seekers. He also called for an end to hotel evictions without guaranteed support, and pressed for a fair, national distribution of responsibility for ongoing support.

The council currently incurs approximately £5 million each year, over and above the grant funding it receives, to support individuals evicted from Home Office-managed hotels.

On top of this, there is an anticipated annual cost of around £1.2 million to accommodate and support the significant number of Chagossian families arriving via Heathrow. Between 22 July 2024 to 4 July 2025, 114 households from the Chagos Islands have presented to the council for assistance.

These combined costs place a considerable burden on local services, divert resources from other essential council functions and undermine the borough's ability to meet the needs of its wider community.

### New policy fails to recognise concerns

The council is also concerned about the government's latest asylum eviction policy, which fails to mention local councils.

Under the policy, individuals who don't accept Home Office

relocation offers twice are evicted from hotel accommodation. This will lead to more former asylum seekers coming to the council as homeless, which we are then legally obliged to support.

**Cllr Edwards** said: "The government's continued underfunding of local authorities, and failure to understand the impact of national asylum policy on our borough, cannot go on.

It is unacceptable, unfair, and unreasonable to continue to expect that the cost incurred from this national responsibility should be met by our taxpayers alone.

"The council is proud of upholding its lawful requirements in supporting asylum seekers and providing safe sanctuary. However, the present inadequate funding and unwillingness by the government to address these pressures cannot continue."

 **A digital-enabled, modern, well-run council**

# Delivering a good housing service and making further improvements



Members of the council's housing repairs team

As the largest landlord in the borough, we're committed to delivering a quality housing service that adapts to residents' changing needs. Earlier this year, the Regulator for Social Housing (RSH) inspected the council and how it manages tenants' homes.

In July, the RSH – the public body in England responsible for inspecting social housing landlords to ensure they deliver safe, well-managed, and good quality homes – awarded the council the second highest consumer grading of C2.

During the inspection, the council's housing service and management of more than 10,200 tenants' properties were measured against four consumer standards (see below).

The judgement indicates that the council is delivering the majority of

the regulatory requirements, with some areas for improvement to achieve the highest rating of C1.

### What are we doing well?

The RSH highlighted that the council is ensuring tenants are safe and secure in their homes and communal areas, which involves work such as conducting boiler replacements, gas and electrical safety checks and supporting residents to tackle damp and mould in their homes.

Since 2017, the council has prioritised building safety works in properties classed as high risk. Works have included installing new smoke and heat detectors and replacing electrical fuse boards and rewiring communal areas in all properties, as well as replacing more than 5,000 fire doors and conducting annual inspections and installing water sprinkler systems in six high rise blocks.

As part of the commitment to keeping residents safe, in

May, we maintained our BM Trada accreditation for fire door maintenance. This certification is a mark of excellence and competence in the field of fire door installation and maintenance.

The RSH also found that we have an accurate and detailed understanding of the condition of tenants' homes, following our boroughwide stock condition survey last year, and that our repairs service is effective and efficient.

Finally, the RSH praised the council for how it treats tenants fairly with respect and tailors services to individual needs while developing a consistent approach to deterring and tackling anti-social behaviour (ASB). This has involved working closely with the police and listening to residents' concerns to take decisive action.

Since August last year, part and full closure orders have been granted by courts across the borough and have proven successful methods of tackling persistent ASB by stopping offenders from entering a communal area or property.

### Making changes

In early 2024, ahead of the regulator's inspection, we started working closely with tenants and leaseholders to enhance our services, including hosting our first Tenant and Leaseholder Conference in June and creating five Special Interest Groups.

Residents' views and local knowledge are vital in helping us to improve our services and test new ways of working.



The areas of improvement identified by the RSH were how we communicate with tenants and report performance, the continuation of surveys and upgrades to all homes, and gathering more information about tenants and their circumstances to further enhance service delivery.

We were already addressing this and had developed a costed improvement plan, which was praised by the RSH. The plan includes a four-year £108 million investment programme (agreed in the council's 2025/26 budget) to accelerate improvements to tenants' homes.

**Angela Bailey, from Uxbridge** recently had her kitchen replaced and said: "We are so pleased with the kitchen you installed. It was done to an extremely high standard, and the workmanship was excellent."

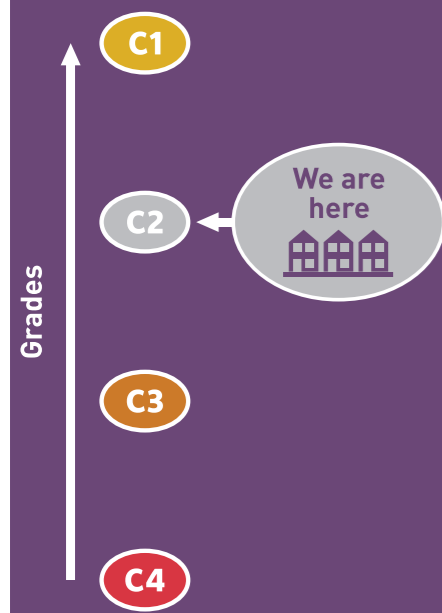
"They left my home clean and tidy and installed my perfect kitchen. The workers showed up on time and went beyond their job to complete it sooner as it was to support a vulnerable person."

When improvement works are planned, the council will write to tenants, and all day-to-day repair requests should be submitted via [www.hillingdon.gov.uk/repairs](http://www.hillingdon.gov.uk/repairs) or through the Hillingdon MyAccount.

### Improvements so far in 2025/26:

- 372 new kitchens installed
- 124 new bathrooms installed
- 67 cases needing aids or adaptations were completed, covering 97 items, such as bathroom changes, stairlifts, hoists, and ramps
- 116 properties have received new windows
- 14 properties had roof renewals
- 322 front entrance and communal and fire doors replaced
- 397 domestic gas boilers replaced.

### What are the consumer grades a social landlord can receive?



### What are the consumer standards?



#### Safety and Quality Standard

Homes must be safe, meet decent standards, and have timely repairs.



#### Neighbourhood and Community Standard

Landlords must help keep areas safe, clean, and deal with anti-social behaviour.



#### Transparency, Influence and Accountability Standard

Landlords must share information, hear tenants' views, and respond fairly.



#### Tenancy Standard

Tenancies must be fair, clearly explained, and supported to help tenants stay housed.

### Cllr Steve Tuckwell, Cabinet Member for Planning, Housing and Growth, said:

"We welcome the regulator's findings which highlights our commitment to ensuring tenants live in safe, warm and good quality homes in welcoming neighbourhoods.

"We have a robust plan in place to deliver ongoing improvements, including a £108 million investment programme to rapidly enhance tenants' homes and equip them for the future.

"Putting residents first will remain at the heart of everything we do as we work closely with the regulator and our communities to deliver further improvements"

Watch Cllr Tuckwell's video on the inspection outcome:

[www.hillingdon.gov.uk/social-housing-inspection](http://www.hillingdon.gov.uk/social-housing-inspection)



Find out more about housing:

[www.hillingdon.gov.uk/housing](http://www.hillingdon.gov.uk/housing)



# Are you recycling the right way?



Monday 22 September marks the start of Recycle Week – a nationwide campaign to encourage people to recycle more and waste less. *Hillingdon People* takes a look at how a few small changes at home can make a big difference.

Each year, the council carries out 572,000 recycling collections from households across the borough. These collected materials are processed and transformed into new products – conserving resources and protecting the environment for future generations.

But, there's still room for improvement. To mark Recycle Week, we're highlighting the steps you can take to recycle right and reduce waste more effectively.

## Sign up for food waste collections

Did you know that recycling bags contaminated with food waste are often rejected by recycling crews? This makes it harder to process materials properly – and that's where recycling right starts.

Currently, 57,900 households are signed up for our free, weekly food waste collections. Since last year, we've collected 4,604 tonnes of leftovers – the equivalent weight of 867 African elephants, which have been collected

and recycled into nutrient-rich compost for local farms.

Our food waste collection service is easy to use, and it's not just for peelings, you can also use it to dispose of pet food, tea bags and coffee grounds, meat and fish (including bones) and lots more.

Once signed up, you'll receive:

- a kitchen caddy to collect the waste
- a roll of caddy liners (food waste bags) to insert into your caddy



- a lockable external food storage bin to keep the full bags until your food waste is collected.

Keeping your food waste separate from your general household waste (in the lockable caddy) also reduces the risk of animals getting into your black bags. To find out more and sign up, visit [www.hillingdon.gov.uk/food-waste](http://www.hillingdon.gov.uk/food-waste).

## Batteries and small electricals

Recycling batteries and small electrical items is an important way we can all help protect the environment and reduce waste.

However, it's essential to dispose of batteries and electricals safely – if placed in your general waste or recycling bag, they can pose a fire risk. In May, crews from the London Fire Brigade responded to a fire at Harefield Civic Amenity Site thought to be caused by a lithium-ion battery disposed of with household waste.

If batteries are removable, they should always be taken out before items are binned. Small electrical items can be recycled via the pink bins found in the borough's

libraries or by visiting our civic amenity sites in Harefield or West Drayton, even if their batteries cannot be removed. Find out more at [www.hillingdon.gov.uk/small-electricals-recycling](http://www.hillingdon.gov.uk/small-electricals-recycling).

You can also recycle disposable or unwanted vapes in the dedicated bins at Harefield Civic Amenity Site.

Household batteries can be dropped off at battery recycling bins found in most council libraries and some leisure centres. Some local supermarkets also have dedicated battery collection points. Find out more at [www.hillingdon.gov.uk/battery-recycling](http://www.hillingdon.gov.uk/battery-recycling).



## New garden waste subscription

The council also offers weekly garden waste collections, which offer better value for money than neighbouring boroughs.

The £70 annual fee covers weekly household collections in spring, summer and autumn (fortnightly in winter when collection volumes halve) and a greater capacity per collection of 270 litres (three 90-litre canvas bags).

Please note that you can request up to an additional three sacks and three tags if required via the council's website.

**Cllr Eddie Lavery, Cabinet Member for Community and Environment,** said: "We're determined to drive up recycling rates in Hillingdon as part of our commitment to becoming the greenest borough in London.

"Sorting waste for recycling is one of the most straightforward ways to reduce our environmental impact, and it's also more cost-effective.

"Food waste recycling, in particular, plays a crucial role by allowing valuable nutrients to be turned into compost. I'd like to thank residents for playing their part – your efforts make a real difference and help us protect the environment for future generations."

You can also dispose of garden waste for free at Harefield Civic Amenity Site and the West Drayton Waste Weekends.

Residents must ensure that garden waste is not placed in black sacks. If it is, it won't be collected.

Find out more at [www.hillingdon.gov.uk/garden-waste](http://www.hillingdon.gov.uk/garden-waste).

## Donate or reuse textiles

Clothing and textiles are the second most common contaminant found in recycling bags.

If your wardrobe needs a clear-out, or your children have outgrown their clothes, you can book a free textiles collection from your front door through the council's website via our partnership with the charity Traid.

Learn more at [www.hillingdon.gov.uk/textile-recycling](http://www.hillingdon.gov.uk/textile-recycling).

## Repair and Reuse Day

As part of Recycle Week, the council is hosting its third Repair and Reuse Day event of 2025 at Botwell Green Sports and Leisure Centre in Hayes, on Saturday 27 September, from 10am to 4pm.

Meet our recycling team and join our partners from Traid, Friends of the Earth, Freegle, Dr Bike and more for a festival of fixing to give old or unwanted items a new lease of life, from damaged clothing to faulty electrical items.

Find out more and book a space at [discover.hillingdon.gov.uk/repair-day](http://discover.hillingdon.gov.uk/repair-day).

Find out more about recycling:  
[www.hillingdon.gov.uk/rubbishandrecycling](http://www.hillingdon.gov.uk/rubbishandrecycling)



A green and sustainable borough

# Enhancing your local town centres



The council is continuing to deliver improvements to high streets across Hillingdon to ensure they thrive, are accessible and provide facilities that meet the needs of the community.

During the past 20 years, major town centres across the country have faced many challenges, such as the rise of online shopping and large high street brands going into administration. This has led to the decline of some high streets, which no longer meet the needs of their communities.

While Uxbridge is a vibrant and thriving town centre, the council wants to ensure this continues well into the future. To achieve this, it set out to co-design a vision with residents, businesses and other stakeholders.

Following an extensive public consultation, which saw 73 per cent of respondents support the proposed plans and its delivery aims, the council formally adopted the Uxbridge Town Centre Vision on Thursday 24 July.

The document sets out plans to further enhance the area by strengthening the local economy, better serving residents and improving public spaces.

## The vision's four key themes

### 1) Public realm improvement

– creating new spaces to encourage visitors and support businesses.

### 2) Diversification of activities

– pop-up shops, collaborative workspaces and exhibitions that bring new organisations to the town centre.

### 3) Better links

– improving connections for walking, cycling and public transport, and increasing access to green spaces and the canal from the town centre.

### 4) More town centre living

– more opportunities to live in the town centre by providing a mix of high quality housing options.

## Bringing the vision to life

In June, the council assigned £315,000 of its £1.1 million UK Shared Prosperity Fund (UKSPF) allocation to contribute towards the delivery of the projects outlined in the vision.

Work will now commence on detailed designs and stakeholder engagement for several projects aimed at improving public spaces and facilities. These include transforming the Civic Centre forecourt as a space for public use, markets and events, and redesigning St Andrew's roundabout to enhance access between Dowding Park and the town centre.

In partnership with Hillingdon Chamber of Commerce, we are also exploring the creation of a Business Innovation Hub to support small and medium-sized businesses to grow.

Detailed designs, project plans and funding proposals will be developed for other medium and long-term proposals outlined in the vision.

### For more on the Uxbridge Vision:

[www.hillingdon.gov.uk/uxbridge-vision](http://www.hillingdon.gov.uk/uxbridge-vision)



## Investing in the centre of Hayes

In July, following a successful bid by the council, Hayes became one of 12 London high streets to receive £50,000 funding as part of the Mayor of London's new High Street Place Labs initiative.

This scheme is designed to help town centres attract investment, improve public spaces, and boost the local economy. The funding will also support the council in continuing to develop plans to enhance Hayes town centre.



The canopy seating area in Hayes town centre

## Driving forward regeneration

UKSPF funding for 2025/26 has been allocated to deliver projects that support residents into work, help local businesses grow, and make improvements to our town centres, including:

- £110,000 for a tri-borough Supplier Readiness Programme in partnership with Ealing and Harrow councils to help 50 businesses bid for large-scale procurement opportunities
- £171,253 to commission a programme of business mentoring and guidance for 135 local small and medium-sized enterprises to innovate, build resilience and grow



Funded by  
UK Government

- £160,000 to deliver employability support, helping 139 residents to find work opportunities
- £665,656 to support the delivery of high street regeneration, including the Uxbridge Vision, the enhancement of Hayes town centre, and extension of the boroughwide shopfront improvement grant.

Find out more  
about UKSPF:  
[www.hillingdon.gov.uk/UKSPF](http://www.hillingdon.gov.uk/UKSPF)



## Cllr Steve Tuckwell, Cabinet Member for Planning, Housing and Growth, said:

"Our Uxbridge Vision sets out our ambitious plans to make the town centre an even better place to live, work, study and do business, ensuring it continues to thrive long into the future.

"Feedback from the community throughout has been vital in helping us ensure the priorities of local people are at the forefront of these plans.

"We're also working proactively to bid for funds and attract investment for our other town centres to support our emerging regeneration plans and create meaningful long-term improvements in the right places.

"This year's UKSPF allocation will allow us to launch the exciting projects in the Uxbridge Vision, while the High Streets Labs funding will enable us to enhance Hayes and make significant improvements to public spaces."



A thriving economy



# 'I am blessed fostering is my job'



Nadia and Sophia with their foster child

Mother and daughter, Sophia and Nadia, welcomed a baby girl into their hearts and home as part of their fostering journey – this is their story.

Sophia Abdulkadar, 60, supported by Nadia Aman, 40, from Hayes, joined the council's cohort of foster carers last April after first hearing at her mosque how she could make a difference to a child's life by fostering.

The baby girl, who was born last November, is the third child Sophia has cared for since becoming a foster carer and came to her and her daughter straight from the hospital. The family meets with the baby's biological mother several times a week.

Sophia said: "When I first heard about fostering, it was very touching, and I felt it was the time to do it. With my children grown up, I have experience, and I'm a caring person.

"Before becoming a foster carer, I was a carer for older people, and I was supporting my sister who is also a foster carer for Hillingdon. When I saw the difference she was making, I was jealous! I thought I had to do it as well."

Nadia added: "Fostering is amazing – to be able to give

someone an opportunity to live and grow in a loving home is great.

"I haven't had a baby myself and this is the first time I've experienced one in the house. You get joy and happiness from helping them and knowing they have a nice, loving home.

"We know what makes her laugh and her favourite toys. When her first tooth came through, we took pictures, and we note all of these things down and we'll put together a memory book at the end of her stay as well."

Sophia said: "So far, fostering has been incredibly rewarding and deeply emotional and it's a journey that requires patience and commitment but it's very fulfilling. Every time you do something good for your foster child, you feel rewarded.

"I'm blessed fostering is my job. When our foster child started smiling, you feel happy that you did that. I would encourage all my family and friends to become foster carers."

The pair said the support on offer from the council's generous payments and benefits package had been beneficial. Sophia said: "The support has made it easier and with less stress."

Nadia added: "It's great support and we haven't struggled with finance. I'm considering fostering myself because I see firsthand what my mum and aunt do and the support that they give, and the help that they get from the council.

"You feel like you're making a difference and knowing that you're giving a child a happy home and a family to stay with is really rewarding."

## Celebrating outstanding care

In July, the pair received the council's first 'Star by Far' award celebrating the care and support they provide (pictured left).

The new, bi-monthly awards recognise the outstanding dedication of our carers.

Nadia said: "I'm ecstatic. I couldn't believe it – it's really nice to have the first award and we really appreciate that.

"We were nominated by our social worker who's been amazing – she's always been there when we've needed her. Anytime we're not sure of something, we just have to ask."



## Cllr Susan O'Brien, Cabinet Member for Children, Families and Education,

said: "We're incredibly grateful to our caring and committed foster carers who are choosing to provide stable and loving homes for children in need.

"The support and dedication they provide to children at one of the most important times of their lives cannot be underestimated, and we'd encourage more residents to consider this vital and rewarding role.

"Our generous payments and benefits package can also help make your fostering journey with us even easier with all the support you need to really make a difference."

## Why are so many foster carers joining Hillingdon?

Hillingdon Council has a highly competitive and supportive fostering package, for both new and existing foster carers, equating to an annual salary up to £72,000.

This includes:

- payments up to £1,500 per week
- 25 per cent off your council tax bill
- £1,000 off utility bills
- an annual family Merlin pass
- a winter fuel allowance
- more than 100 training courses.

Start your fostering journey:  
[www.hillingdon.gov.uk/fostering](http://www.hillingdon.gov.uk/fostering)



Thriving, healthy households

# Protecting yourself and your home from the impact of floods



A year on from last September's flash floods, *Hillingdon People* highlights how you can ensure you and your home are flood-ready and looks at innovative alleviation projects the council has delivered to help protect homes and businesses.

Last autumn's flash floods, in which a month's rainfall fell in a single day, affected localised areas across the borough and damaged homes and buildings, and the council's investigations following the event highlighted how beneficial it is for households and businesses at risk of flooding to have a plan in place so they can respond quickly and safely.

Traditionally, flood season in the UK runs from October to March, when heavy rainfall is more common. September is also Preparedness Month, a national campaign to encourage households to be equipped to respond quickly in the event of an emergency or crisis.

## To help prepare for a flood event, follow these four steps:

-  **know if you're at risk**
-  **get alerts**
-  **have a plan**
-  **act quickly.**

Firstly, to find out if your home or business is in a location that could be at risk, check the government's flood risk website at [www.gov.uk/check-long-term-flood-risk](http://www.gov.uk/check-long-term-flood-risk).

The council has also produced its own online map, which indicates the location of local

ivers and highlights areas likely to be at a higher risk of flooding, based on the government's information. This can be found at [www.hillingdon.gov.uk/flood-and-water-map](http://www.hillingdon.gov.uk/flood-and-water-map).

To stay aware of any immediate flood risk in your local area, check current flood warnings on the Environment Agency's website at [check-for-flooding.service.gov.uk/alerts-and-warnings](http://check-for-flooding.service.gov.uk/alerts-and-warnings) or call Floodline's 24-hour service on 0345 988 1188 for updates. You can also use the Met Office's website at [www.metoffice.gov.uk](http://www.metoffice.gov.uk), or follow its social media accounts, to keep up to date with weather warnings.

If your home or business is in an area at risk, you can sign up to receive flood warnings at [www.gov.uk/sign-up-for-flood-warnings](http://www.gov.uk/sign-up-for-flood-warnings).

It's essential, if your property is at risk, to have a flood plan prepared in advance, including a grab bag of essential items you may need if you need to leave your home quickly. A useful guide can be found at [thefloodhub.co.uk/household](http://thefloodhub.co.uk/household).

## CLlr Eddie Lavery, Cabinet Member for Community and Environment, said:

"Every flooding event in Hillingdon gives us an opportunity to learn how we can make the borough and our communities more flood-resilient, as we know climate change means extreme weather events will become more common.

"The best way to help protect your home and loved ones is to be prepared and have a plan. Check our guide on the right to ensure your household is flood-prepared and able to respond quickly and safely."

## What to do in a flood

There are a range of actions you can take to help protect your home against floodwater:

- block doors and air vents with plastic sheets and duct tape
- turn off gas, electricity and water supplies (if you can safely)
- have a grab bag of essential items, if you need to live in a different part of the house or move into a neighbour's house or further afield (drinking water, first aid kit, torch, essential medicine, ID, insurance documents, etc)
- read the Environment Agency's advice to prepare for and get help during and after a flood at [www.gov.uk/prepare-for-flooding](http://www.gov.uk/prepare-for-flooding)
- use purpose-designed flood protection products, which are much more effective than traditional sandbags (sandbags can allow water to seep through, are often contaminated once used, and must be disposed of).

To protect yourself, always allow sufficient time to evacuate your property before water surrounds it. Where possible, always:

- keep children, vulnerable people and pets out of floodwater
- avoid walking through floodwater
- wash your hands thoroughly if you touch floodwater, as it may be contaminated
- store drinking water in clean containers.

If you believe there is a risk to life, call 999.

In heavy rain, some roads may flood. Avoid these, as even a small depth of floodwater can lift a car.

## Innovative schemes continue to reduce borough's flood risk

Hillingdon's geography features many rivers, streams and brooks, along with extensive open space. These features can lead to flooding, especially when combined with built-up paved areas and ageing drainage networks.

In recent years, the council has introduced multiple, innovative solutions to reduce risk in line with its flood risk strategy, from its award-winning rain gardens in Field End Road, Eastcote, to alleviation schemes in parks and green spaces across the borough, which slow river flows, or retain water safely, while helping enhance biodiversity.

In late August, the final community planting day took place in Spider Park (Bridgwater

Open Space), South Ruislip, to mark the completion of the year-long river reprofiling project, which has already boosted local wildlife while increasing the ability of Yeading Brook to adapt and cope with the likely impact of increased intense storms resulting from climate change.

Among the projects currently in progress is the Pinn Meadows Natural Flood Management programme, where areas along the River Pinn that are susceptible to flooding following heavy rainfalls will be adapted to protect nearby residential properties from flash flooding and reduce run-off rates and peak flows along the river and Elma's Ditch.



Flood alleviation scheme in South Ruislip's Spider Park

## Climate festival comes to Uxbridge town centre

The Hillingdon Cleaner Green Festival is a new, community-organised event supported by the council and takes place on Saturday 20 September, from 11am to 4pm, at St Margaret's Church, Windsor Street in Uxbridge.

Head along for information on solar panels, insulation, heat pumps or electric vehicles and meet the council's recycling team. There's also games and activities for children. Entry is free.

Find out more: [www.hillingdon.gov.uk/flooding](http://www.hillingdon.gov.uk/flooding)



**A green and sustainable borough**

# Connecting Hillingdon: one reader at a time

The council's Library Strategy 2023-2027 is focused on making services more accessible so that more residents can benefit from its library services. Discover what's on offer.



The council's Home Library Service team

## Bringing stories and connection

For residents who are housebound, have mobility challenges, or care full-time for others, the council's Home Library Service (HLS) brings the library directly to their door.

Every four weeks, a dedicated team of library staff visits homes and sheltered housing schemes across the borough, delivering more than just books.

From large print and standard print titles to audiobooks, CDs, and DVDs, the service offers a rich selection of materials – all personalised to the reader's tastes. Requests for specific titles are always welcome and, importantly, everything is completely free of charge.

"It's really essential to find out what interests the reader and curate a special collection just for them," says **Home Library Assistant, David Noel**, who looks after deliveries. "It makes them feel seen, listened to, and part of something bigger."

## Margaret Henderson, a

100-year-old reader from Hayes, shared just how important the service is to her. "I couldn't be without my books," she says.

"David does an excellent job picking them for me. I love gritty stories – Catherine Cookson is my favourite. Books help me relax, bring me comfort and take me somewhere else."

For those unable to receive visits, the 'HLS Special' option allows family or friends to collect



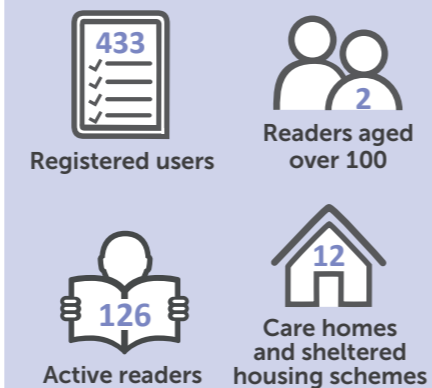
David Noel and Margaret Henderson

pre-packed bags of chosen books from a nearby branch. Residents with visual impairments can also receive talking books by post, thanks to partnerships with Royal Mail and local charities.

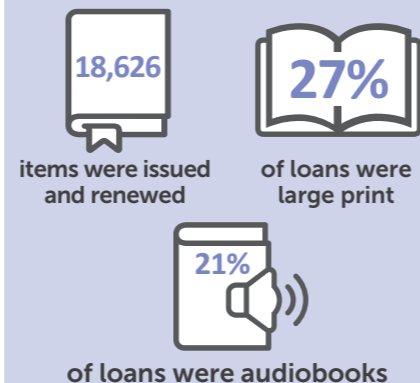
In addition, the HLS team also organises outreach events in care homes and sheltered housing schemes across the borough.

Find out more and sign up at [www.hillingdon.gov.uk/home-library](http://www.hillingdon.gov.uk/home-library) or call 01895 556446.

## HLS currently supports:



## In 2024/25



## Helping residents with sight loss

Thanks to recent funding from the Ulverscroft Foundation and The Reading Agency, Hillingdon libraries have introduced new equipment and services for blind and partially sighted residents.

Tools like magnifiers and Talking Tins/Multi-Memos (voice recorders) are available to borrow, as well as specialist board games.

Tactile pottery sessions, talking book groups, and social reading events are also now running at Uxbridge, Yiewsley, Ruislip Manor, and Botwell Green libraries. Find out more at [discover.hillingdon.gov.uk/vip-groups](http://discover.hillingdon.gov.uk/vip-groups).

Many participants have found these regular gatherings invaluable.



One such attendee, **Colin Hoppe, from West Drayton**, (pictured above) shared: "I wasn't born blind – I used to be a chef until I lost my eyesight. That's when I discovered pottery. Being creative and using pottery as an outlet to express my emotions and feelings has had a truly positive impact on my life. It gives me the chance to be creative, to engage with others, and stay involved in the community."

Partnerships with local health teams and community organisations also ensure that residents newly diagnosed with a visual impairment are aware of the support available through their local libraries. The council also holds regular sight loss events, including Hi-Vis Fortnight, to help

connect residents with key local services and support networks.

To request specialist equipment, contact the Botwell, Uxbridge, or Ruislip Manor library branches. Find out more at [www.hillingdon.gov.uk/accessibility-equipment](http://www.hillingdon.gov.uk/accessibility-equipment).

## Conversations that count

Since November 2024, Uxbridge Library has teamed up with Brunel University London to host monthly Happy to Chat sessions – creating a relaxed, welcoming space where residents of all ages can come together for meaningful conversation.

Brunel student volunteers are on hand at each session to chat with anyone who drops in, offering a friendly face, a listening ear, and genuine connection. The sessions are informal, inclusive, and free to attend – no booking is required.

To find out when the next one is happening, visit [discover.hillingdon.gov.uk/happy-to-chat](http://discover.hillingdon.gov.uk/happy-to-chat).

## Download books on the go

To further expand accessibility, Hillingdon libraries have enhanced their digital audiobook offer.

With OverDrive, BorrowBox, and now uLibrary available, residents have access to more than 4,300 eAudiobooks – free to borrow with your library card.

Download the free apps from the Google Play or Apple app store to your phone or tablet.

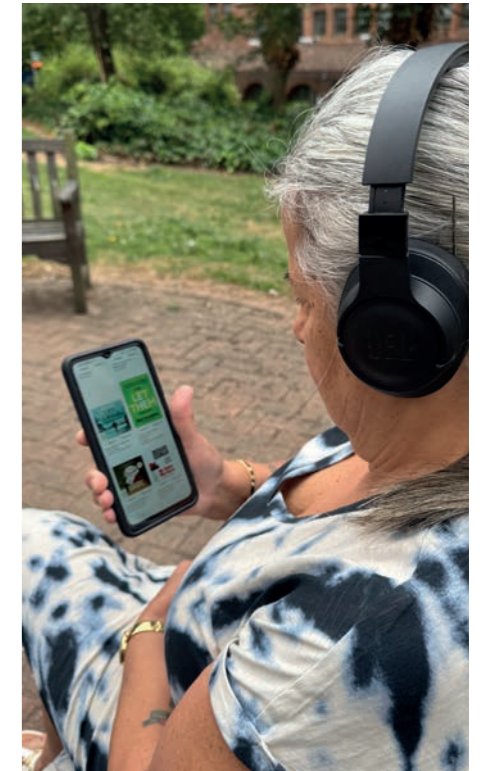
The apps are easy to use, work offline, and offer a three-week loan period with automatic returns. You can borrow up to five titles at a time and reserve up to five books.

Accessibility features include adjustable playback speeds, dark/light mode, compatibility with screen readers, and support for both Android and iOS users.

To explore the digital audiobook collections, simply download the Overdrive, BorrowBox or uLibrary apps and sign in with your library or HillingdonFirst card. You'll need your library PIN to access the resources –

if you've misplaced it, simply visit your local branch or email [librarycontact@hillingsdon.gov.uk](mailto:librarycontact@hillingsdon.gov.uk) to retrieve it.

Find out more at [www.hillingdon.gov.uk/digital-library](http://www.hillingdon.gov.uk/digital-library).



## Cllr Eddie Lavery, Cabinet Member for Community and Environment, said:

"Whether it's delivering books to someone's doorstep, creating warm and welcoming spaces, or expanding our digital audiobook offer, our library services serve communities across Hillingdon.

"This reflects our commitment in the council's Library Strategy to make services more accessible and tailored to what our residents need most."

Explore what's on offer: [www.hillingdon.gov.uk/libraries](http://www.hillingdon.gov.uk/libraries)



Thriving, healthy households

# Celebrating summer across the borough

During July and August, residents of all ages enjoyed an action-packed programme of council events. *Hillingdon People* reports on an unforgettable two months of family fun.

## Thousands take part in HAF

Our Holiday Activities and Food (HAF) Programme, which ran from Wednesday 23 July to Friday 29 August, proved to be a huge success once again.

More than 19,000 places were available across 50 locations for children eligible for benefits-related free school meals, which included sessions for those with special educational needs.

At Rickmansworth Aquadrome, the Canoe Sports Trust led popular paddlesport camps, while young creatives took part in drama, directing and editing with C-Change Youth at St Margaret's Church in Uxbridge.

Other highlights included remote-controlled car racing with RC Vision at West London Racing Centre in Uxbridge, a climbing adventure at The Nest in Hayes, and a Sports Leader Programme to inspire the next generation of coaches at Ruislip Young People's Centre.

## Building skills and friendships

A range of fun activities for children aged eight to 19 (and up to 24 for children with special educational

needs) were also on offer as part of the council's Youth Offer.

Across places and spaces in Hillingdon, young people enjoyed an unforgettable summer thanks to the vibrant and varied programme.

From adrenaline-filled BMX sessions and life skills, to cooking activities and creative craft, the holiday offer brought together fun, learning, and adventure.

In the borough's green spaces, young people took part in sports, games, and picnics, while others worked towards their Sports Leader Award, gaining valuable skills in teamwork and leadership.

Beyond the summer, Hillingdon Youth Offer continues year-round.

For more information, visit [www.hillingdon.gov.uk/youth-offer](http://www.hillingdon.gov.uk/youth-offer).

## Summer Reading Challenge

Younger readers embraced the return of the Summer Reading Challenge across Hillingdon's libraries, inspired by the enchanting theme of a magical 'story garden'.

Designed to encourage children to read for fun during the school holidays, the challenge proved popular once again with families.



The borough's libraries also hosted a series of vibrant, interactive storytelling events designed to bring tales to life for young readers. At Botwell Green Library, poet and entertainer, Justin Coe, delighted audiences with wacky wordplay, silly stories, puppet-enhanced verse, and plenty of audience participation.

One of the highlights was The Imagination Station, a family fun day at The Great Barn, Manor Farm, Ruislip on Thursday 14 August, which featured crafts, storytelling, fitness challenges and more. Children also participated in forest school sessions, delving into stories about mini beasts, wildlife and dragons – perfectly tying into the story garden theme.

**Hannah Gray, from Hayes**, (pictured above), attended a forest school session at Yeading Children's Centre with her children Poppy and Reuben. She said: "We had an amazing time at forest school! To have a safe place with plenty to do outside the home has been incredible!"

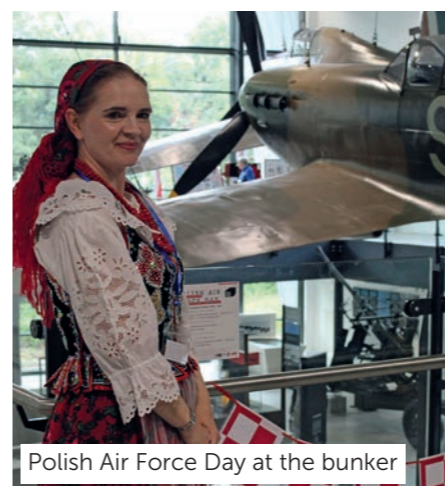
## Bringing history to life

At the Battle of Britain Bunker in Uxbridge, the programme offered something for everyone.

As part of the 'Summer of 1940' theme, the centre ran family craft sessions inspired by wartime Britain, including special mask-making and 'make-do and mend' projects.

History fans attended informative talks by leading military historians and explored the bunker's hidden rooms through exclusive behind-the-scenes tours.

Polish Air Force Day, held on Saturday 2 August, paid tribute to the bravery of Polish forces during World War Two with talks, cultural displays, and family-friendly activities.



Polish Air Force Day at the bunker

## Time travel at Cranford Park

Cranford Park transported families back in time with a series of engaging heritage events.

The Family Day on Sunday 27 July featured medieval games, historical re-enactments, falconry, music, and horse and carriage rides. **Bob Barton, Secretary of Cranford Park Friends**, said: "It was wonderful to see so many people enjoying themselves in a much-loved local park. I especially loved seeing horses using the restored 18th century stables for the first time in living memory."



A horse and carriage ride at Cranford Park's Family Day

Children tried their hand at Viking knitting and clay making during Cranford Crafts, while the Parkaeology talks and tours explored the site's historical roots covering pre-history, the Tudor and medieval period, as well as previous excavations. The restored stables and secret garden tours also drew in visitors during a special open day on Sunday 10 August.

## Play takes centre stage

On Wednesday 6 August, Playday brought families together at Hillingdon Athletics Stadium for a high-energy day of outdoor fun, drawing an impressive crowd of 2,000 attendees.

Participants enjoyed activities, such as BMX riding, archery, cricket, basketball, judo and crafts. **Laura Jones, from Hayes** brought her seven-year-old son Kai. She said: "My son really enjoyed the

BMX riding, and it was fantastic to see him trying something new and building his confidence among other children. It's wonderful to have these kinds of opportunities available locally, making summer truly special for our family."

The event also showcased a range of stalls promoting health and wellbeing.



Hook-a-duck fun at Cranford Park's Family Day



Playday returned to Hillingdon Athletics Stadium



Fawzi and Ziad at the Summer Reading Challenge's Imagination Station

Discover new events: [discover.hillingdon.gov.uk/events](http://discover.hillingdon.gov.uk/events)



# Funding for local communities

Improvements are coming to your local neighbourhoods, as the council announces the latest round of resident-proposed projects and park upgrades funded by its Chrysalis programme.



Each year, the council allocates grants between £5,000 and £100,000 to support initiatives that enhance facilities on council-owned land. In 2025/26, a range of projects will benefit from the programme. These include:

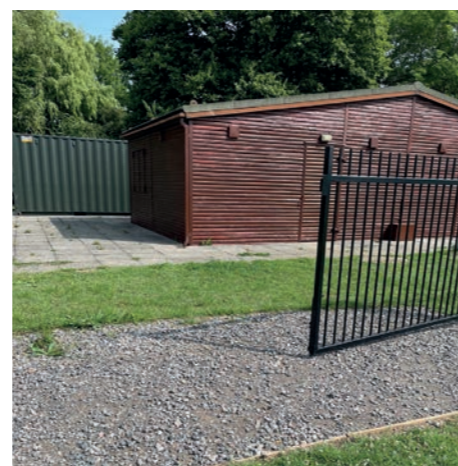
- **Pole Hill Open Space, (Hillingdon East)** – playground improvements.
- **Coney Green car park, (Colham and Cowley)** – resurfacing works.
- **Gutteridge Wood and Meadows, (Colham and Cowley)** – improving the accessibility and condition of the Gutteridge Wood entrance

- bridge and a section of the Hillingdon Trail.
- **Field End Recreation Ground, (South Ruislip)** – new pathway to help pupils on their school commute.
- **Dowding Park, (Hillingdon West)** – refurbishing existing lighting.
- **Southlands Arts Centre, (West Drayton)** – enhancements to the historical communal gardens.

**Last year's impact in action**  
Nine projects completed last financial year using £500,000 in Chrysalis grants. At Pinner United Football Club, based in Bessingby Park, Ruislip,

(Eastcote ward), the funding enabled the installation of a new storage container, an additional gate to the changing room enclosure and a hardstanding area to tackle drainage issues during the winter months (pictured below).

**Club chair and founder, Dave Howes**, said: "We are very grateful to the council's Chrysalis scheme for funding these improvements which have been crucial for our club's development."



**Cllr Lavery** said: "Our Chrysalis scheme gives residents the chance to shape their local areas by funding projects they care about.

"Alongside this, our dedicated parks improvement programme is enhancing much-loved green spaces across the borough – making them more accessible, welcoming, and enjoyable for everyone."

**Find out more about Chrysalis:**  
[www.hillingdon.gov.uk/chrysalis](http://www.hillingdon.gov.uk/chrysalis)



# Gain exclusive access to the past

This September, Heritage Open Days return, and to mark the occasion the council is launching a Hillingdon Heritage Membership to enhance visitors' experiences at its historic sites.

Heritage Open Days is the UK's largest annual celebration of history and culture, giving free access to historic places and experiences usually closed to the public.

In Hillingdon, here are a few of the highlights:

- **Battle of Britain Bunker** – Explore the 1930s generator house (Saturday 13 to Sunday 21 September, from 10am to 4pm). Please note access to the generator house is free during these dates, but entry to the bunker and visitor centre still requires a ticket.
- **Eastcote House Gardens** – Visit the 17th-century stables and dovecote (Sunday 14 September, from 11am to 4pm).
- **Manor Farm, Ruislip** – Explore the Grade II listed Tudor house (Saturday 13 and Sunday 14 September, from 10am to 4pm) and The Great Barn (Saturday 13 September, from 10am to 4pm; Sunday 14 September, from 1pm to 4pm). Find out more at [discover.hillingdon.gov.uk/heritage-open-days](http://discover.hillingdon.gov.uk/heritage-open-days).



**Heritage membership scheme**  
For residents wanting a deeper experience of Hillingdon's history, the council is launching a new Hillingdon Heritage Membership which offers access to the council's key heritage sites: the Battle of Britain Bunker Exhibition and Visitor Centre, Uxbridge; Manor Farm House and The Great Barn, Ruislip; Cranford Park, Hayes; and Eastcote House Gardens.

Membership is annual and includes discounts (reduced prices on food, drinks and gift shop items), free tours, and access to special 'member days.' It also includes free priority booking for walks and talks, along with exclusive 'Find my Past' ancestry workshops hosted by the council's Museum and Archives Service.

- Member benefits at a glance**
- Battle of Britain Bunker.** Enjoy one complimentary bunker tour each year, unlimited access to the visitor centre, free admission to the speaker series talks, plus a 10 per cent discount at the café and shop.
  - Manor Farm and The Great Barn** Receive one free guided tour of the house and tour of The Great Barn each year as part of a special member day. The card also unlocks access to an expanded speaker series.
  - Eastcote House Gardens** Join one complimentary walking tour of the site annually, on one of the member days. You'll also enjoy access to exclusive speaker series talks and outdoor activities.
  - Cranford Park** Members will receive updates on events and activities in the park.

Hillingdon Heritage Membership costs				
Hillingdon Heritage Membership fees and charges 2025/26	Adult	Over 65	Concessions – (Military, student, Blue Light)	Family (2 adults and up to 4 children)
Residents	£40	£32	£40	£60
Non-residents	£52.50	£42	£40	£60

**Sign up for membership from Friday 12 September:**  
[www.hillingdon.gov.uk/heritage-membership](http://www.hillingdon.gov.uk/heritage-membership)



# Delivering enhanced SEND support

The council has refreshed its Local Offer for children and young people with Special Educational Needs and Disabilities (SEND) to make finding support simpler and clearer.



The Local Offer is a statutory requirement for all councils, outlining the range of support available for children and young people with SEND from birth up to 25 years old, as well as their families. It acts as a guide, helping families discover what resources are available in their community and how to access them quickly and easily.

The borough's updated Local Offer is now called Hillingdon Empowering Local Lives Offer (HELLO), a name chosen by young people with SEND, to highlight its focus on empowering lives and making support more accessible for everyone.

Designed to improve outcomes and opportunities for children

and young people, the new pages on the council's website are easier to navigate and bring everything together in one place. Information is clearly organised into three sections – parents and carers, young people, and professionals – making it simpler for visitors to find what's relevant to them.

For parents and carers, the site includes guidance on where to start if you think your child has SEND, early years family support, and education and health advice. Our children's centres support families and carers with children under five in a supportive and nurturing environment, while our Stronger Families Hub provides early and targeted support.

You'll also find details of health and wellbeing services, including health visiting and school nursing, annual health checks, and support for children with more complex needs.

Financial help is covered too, with information on the Carer's Allowance, council tax disability relief scheme, and short breaks – giving children and young people a fun experience while carers get valuable time to recharge.

Young people can explore education and training options, supported internships, and Learn Hillingdon adult education courses for those approaching adulthood, plus activities, support groups, and how to join Aim High, our SEND youth forum, to have their say and shape future services.

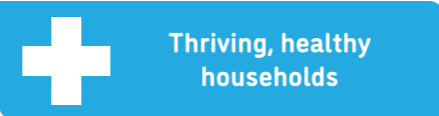
For professionals, there's information on our SEND Advisory Service, which offers early intervention and support for pupils with additional needs. Early years providers, schools, and post-16 settings can also now make referrals directly through the site.

### Take a virtual tour of our special schools

Explore our range of special schools online through a series of videos, meet the dedicated staff, and hear from families and children about the difference these schools make.

Visit [www.hillingdon.gov.uk/maintained-special-schools](http://www.hillingdon.gov.uk/maintained-special-schools) to find out more.

Access support:  
[www.hillingdon.gov.uk/SEND-local-offer](http://www.hillingdon.gov.uk/SEND-local-offer)



**Cllr Susan O'Brien, Cabinet Member for Children, Families and Education**, said: "We want all children and young people to live healthy, active and independent lives with opportunities for learning at all ages to improve educational outcomes.

"Our refreshed SEND Local Offer puts everything families need to know in one easy to access place – so do take a look at the range of help we provide."

## News from our partners

### Keeping well – free flu and COVID-19 vaccinations available

Winter may feel distant, but the NHS free flu and COVID-19 vaccination campaign has started.

Flu and COVID-19 can be serious, leading to increased hospital admissions and fatalities, especially for certain groups.

Annual vaccinations provide good protection and boost immunity. If recommended by the NHS, book your vaccinations as soon as you receive your invite.

#### Flu vaccinations

**• From September:** Children and those who are pregnant will be invited. School-age children will receive information from their school, and small children will get invites from their GP. Pregnant

individuals should also consider RSV and whooping cough vaccinations.

**• From October:** Adults aged over 65, adults aged over 18 with health conditions, care home residents, close contacts of immunosuppressed individuals, and frontline care workers will be invited.

#### COVID-19 vaccinations

**• From October:** Care home residents, adults aged over 75, and anyone aged over six months who is immunosuppressed will be invited.

#### Answers to common vaccination questions

**• Do vaccinations hurt?** You may feel a small scratch and have

mild symptoms. Taking paracetamol (as prescribed on the packet) in the hours after your vaccine will help. Any symptoms from the vaccinations will not be as bad as catching flu or COVID-19.

#### • Do vaccinations contain pork?

Flu and COVID-19 vaccines for adults do not contain pork. The flu nasal spray for children does, but an alternative is available. The British Fatwa council has permitted

the use of the nasal spray in children.

**• How to get vaccinated:** The NHS will contact eligible individuals. Use the NHS App, ask at your pharmacy, or contact your GP.

For more information, visit [www.nwlononibc.nhs.uk/seasonal-vaccinations](http://www.nwlononibc.nhs.uk/seasonal-vaccinations).



### Keeping you safe: update from the Metropolitan Police Service

I am Inspector Laura Molyneux, and I have oversight of our schools, children and young persons' work within Hillingdon.

The way we work with our schools across the Metropolitan Police Service has changed and our dedicated children and young persons officers now work alongside the dedicated ward officers in your communities. They support young people, both in and out of schools, and maintain engagement with headteachers, safeguarding leads, and school staff.

I am also the lead for our Violence Against Women and Girls (VAWG) plan for Hillingdon. We have been really busy in this area and have increased the number of high visibility patrols in our open spaces and more closely scrutinised known violent offenders. This has led to a decrease in reports of VAWG of nearly 17 per cent in June. Please remain vigilant and alert when out in the community, and we urge women and girls to report any unacceptable behaviour, harassment or unwanted advances to the police.

More broadly, I am pleased to report that June saw a significant reduction in motor vehicle crime, with incidents dropping by nearly 20 per cent and anti-social behaviour fell by almost 15 per cent.

Residential burglary also continues to be on a downward trend. In June, the number of offences was down 13 per cent from the previous month and 30 per cent from last year.

We still have some work to do around shoplifting offences and personal theft, but we will tackle this by being proactive and visible in

hotspot areas, targeting known offenders and focusing on bringing them to justice.

Our new, Met Engage communication platform, is now live. It is being used by both our neighbourhood officers and communities to communicate effectively with relevant and timely crime prevention advice.

I would encourage everyone to sign up at [www.metengage.co.uk](http://www.metengage.co.uk).

You can also find details of your local ward officer at [www.met.police.uk/area/your-area](http://www.met.police.uk/area/your-area).



# Discover Hillingdon

For further details and to book these events (which are either run by the council or take place at council-owned venues) plus many more, visit [discover.hillingdon.gov.uk](http://discover.hillingdon.gov.uk). Events marked \* are FREE.



## September

- 20 **Led walk\***  
West Drayton
- 22 **Sow and grow gardening club\***  
Ickenham Library
- 22 **Tea dance\***  
Christ Church
- 23 **Knitting and crochet club\***  
South Ruislip Library
- 23 **Board games drop-in session\***  
Yiewsley Library
- 23 **Assembly for Older People\***  
Civic Centre
- 23 **Dementia-friendly coffee afternoon\***  
Yeading Library
- 24 **IT taster session\***  
Botwell Green Library
- 24 **Tiny Senses\***  
Manor Farm Library
- 24 **Adult colouring\***  
Northwood Pop-up Library
- 24 **Led walk\***  
Hillingdon
- 24 **Author talk: The Profumo Affair\***  
Uxbridge Library
- 25 **Once upon a bump\***  
South Ruislip Library
- 26 **Unwind and unravel stitch group\***  
Charville Library
- 26 **Desi dance\***  
Botwell Green Sports and Leisure Centre
- 26 **Tenant and Leaseholder Engagement Conference\***  
Civic Centre
- 26 **Coffee and Crime with Kia Abdullah**  
Manor Farm Library
- 26 **Women's walking football\***  
Hillingdon Sports and Leisure Complex
- 26 **Pride Hub Hillingdon\***  
Ruislip Manor Library
- 27 **Wicked Singalong Film**  
Compass Theatre



- 28 **Apple Day\***  
Cranford Country Park
- 29 **Introduction to British Sign Language\***  
Ickenham Library
- 30 **Coffee morning\***  
Hayes End Library
- 30 **Led walk\***  
Ruislip Lido and woods
- 30 **Dementia-friendly daytime disco**  
Compass Theatre
- 30 **Teen totes\***  
Ickenham Library

## October

- 2 **Tea dance\***  
Winston Churchill Theatre
- 3 **Coffee and Crime with Kate Kemp\***  
Manor Farm Library
- 3 **Saving All My Love For You**  
Beck Theatre
- 4 **Pride Hub Hillingdon\***  
Yiewsley Library
- 5 **Esprit de Corps: Royal Air Force Squadronaires**  
Winston Churchill Theatre

- 7 **Special Interest Group: Tenancy Management and Welfare Support\***  
Civic Centre

- 9 **Musical Mayhem**  
Runs until 11 October  
Compass Theatre

- 17 **Coffee and Crime with M J Arlidge**  
Manor Farm Library

- 18 **Storytelling with Laura Henry-Allain MBE\***  
Uxbridge Library

- 19 **High School Musical Jr**  
Compass Theatre

- 20 **Tea dance\***  
Christ Church

- 22 **Calendar Girls The Musical**  
Runs until 25 October  
Winston Churchill Theatre

- 25 **Mythical beasts writing workshop\***  
Ruislip Manor Library

- 28 **Carers Forum\***  
Civic Centre

- 29 **Halloween Theatre Workshops**  
Runs until 31 October  
Compass Theatre

- 29 **Festivals and celebrations writing workshop\***  
Botwell Green Library

- 29 **Fostering information event\***  
Online

- 31 **Desi dance\***  
Botwell Green Sports and Leisure Centre

## November

- 1 **The Snow Queen**  
Compass Theatre

- 5 **An Ideal Husband**  
Runs until 8 November  
Compass Theatre

- 6 **Tea dance\***  
Winston Churchill Theatre

- 31 **Coffee and Crime with Tony Kent**  
Winston Churchill Theatre

- 12 **Disney's Beauty and the Beast**  
Winston Churchill Theatre

- 12 **Living Together**  
Runs until 15 November  
Compass Theatre

- 19 **Manilow and Me: A Night of Music and Memories**  
Winston Churchill Theatre

- 23 **Esprit de Corps: Band of the RAF Regiment**  
Winston Churchill Theatre

## Community events

### September

- 24 **The Great British Bake Off Musical**  
Runs until 27 September  
7.30pm (2.30pm Saturday matinee)  
Cost: £18/£16 concessions.  
Tickets via [www.ticketsource.co.uk/hmstickets/the-great-british-bakeoff/e-beglle](http://www.ticketsource.co.uk/hmstickets/the-great-british-bakeoff/e-beglle) or call 01753 886 609.  
Winston Churchill Theatre, HA4 7QL

- 30 **West Drayton and District Local History Society talk**  
7.30pm (doors open at 7pm)  
Cost: Free.  
History of bee keeping with Hardip Singh.  
St Martin's Church Hall, UB7 7PT

### October

- 11 **Uxbridge Choral Society presents a 'Come and Sing' workshop**  
10am  
Cost: £15, including tea/coffee.  
To apply, email [strach62@gmail.com](mailto:strach62@gmail.com) or call 07946 331 210.  
St Margaret's Church, UB8 1AB

- 11 **Harrow Choral Society's Autumn Concert**  
5.30pm  
Cost: £15, under-18s £2.  
Tickets on the door and via [www.harrowchoral.org.uk](http://www.harrowchoral.org.uk).  
St Albans Church, HA2 7PF

- 12 **Society of Ruislip Artists 80th Anniversary Autumn Exhibition**  
Runs until 25 October  
10am to 5pm, Sunday 11am to 4pm  
Cost: Free.  
The Cow Byre Gallery, Manor Farm, HA4 7SU

## Performing Arts Classes at the Compass Theatre!



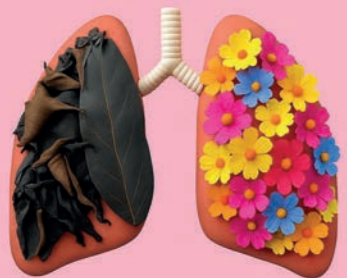
Weekly performing arts classes at Compass Theatre, Ickenham for children aged 3-18yrs. Sessions run on Thursdays after school and Saturday mornings during term time.



Find out more:  
[www.dk-pro.co.uk/join-in](http://www.dk-pro.co.uk/join-in)



## Hillingdon Stop Smoking Service



Stopping smoking is one of the best things you will ever do for your health.

Our free service provides one-to-one support, nicotine replacement therapy and information to help you stop smoking.

Email: [cnw-tr.stopsmoking@nhs.net](mailto:cnw-tr.stopsmoking@nhs.net)  
 Call: 0203 838 7858  
 Visit: [www.cnwl.nhs.uk/services/addictions/hillingdon-stop-smoking-service](http://www.cnwl.nhs.uk/services/addictions/hillingdon-stop-smoking-service) or scan the QR code.



Are you looking for good quality furniture or electricals?  
 Or do you have some you want to donate?



For a free and friendly collection call your nearest branch - open 6 days a week

We recycle quality unwanted furniture and electricals. We provide paid employment and training to disadvantaged people and excellent quality furniture at fantastic prices to you. Visit our stores today!

Uxbridge: 01895 256655  
 Hayes: 0208 797 9505  
[www.WeAreTrinity.Org.Uk](http://www.WeAreTrinity.Org.Uk)  
[facebook.com/TrinityHomeless](https://facebook.com/TrinityHomeless)



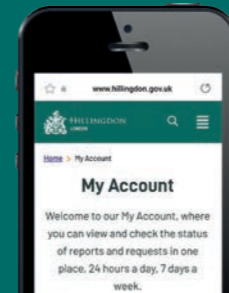
## Need to contact us? Join the thousands choosing to do it online

It's quicker and easier to report issues to us online. By registering for a Hillingdon MyAccount, you can view and check the status of your reports and requests in one place.

Sign up today at [www.hillingdon.gov.uk/myaccount](http://www.hillingdon.gov.uk/myaccount).

You can:

- tell us about a problem in your road
- report fly-tipping or anti-social behaviour
- request recycling bags
- order a new Hillingdon First card and much more...



### USEFUL CONTACTS

Adult education  
[www.hillingdon.gov.uk/adultlearning](http://www.hillingdon.gov.uk/adultlearning)

Benefits  
[www.hillingdon.gov.uk/benefits](http://www.hillingdon.gov.uk/benefits)

Births, deaths and ceremonies  
[www.hillingdon.gov.uk/births-deaths-ceremonies](http://www.hillingdon.gov.uk/births-deaths-ceremonies)

Businesses and licensing  
[www.hillingdon.gov.uk/business](http://www.hillingdon.gov.uk/business)

Councillors, meetings and consultations  
[www.hillingdon.gov.uk/council](http://www.hillingdon.gov.uk/council)

Council tax  
[www.hillingdon.gov.uk/counciltax](http://www.hillingdon.gov.uk/counciltax)

Families' Information Service, fostering and adoption  
[www.hillingdon.gov.uk/families](http://www.hillingdon.gov.uk/families)

Fraud Hotline  
[www.hillingdon.gov.uk/report-fraud](http://www.hillingdon.gov.uk/report-fraud)  
 0800 389 8313

Health and wellbeing  
[www.hillingdon.gov.uk/health](http://www.hillingdon.gov.uk/health)

Housing Services  
[www.hillingdon.gov.uk/housing](http://www.hillingdon.gov.uk/housing)  
 01895 556666

Hillingdon Social Care Direct (adults) (including TeleCareLine and Meals Service)  
[www.hillingdon.gov.uk/socialcare](http://www.hillingdon.gov.uk/socialcare)  
 01895 556633

Leisure (including parks, leisure centres, theatres and events)  
[www.hillingdon.gov.uk/leisure](http://www.hillingdon.gov.uk/leisure)

Libraries  
[www.hillingdon.gov.uk/libraries](http://www.hillingdon.gov.uk/libraries)

Planning and Building Control  
[www.hillingdon.gov.uk/planning](http://www.hillingdon.gov.uk/planning)

School admissions  
[www.hillingdon.gov.uk/schooladmissions](http://www.hillingdon.gov.uk/schooladmissions)

Stronger Families Hub  
[www.hillingdon.gov.uk/stronger-families](http://www.hillingdon.gov.uk/stronger-families)

Transport, roads and parking  
[www.hillingdon.gov.uk/transport](http://www.hillingdon.gov.uk/transport)

### Mental health support

Hillingdon Mind  
 01895 271559

Samaritans  
 116 123 (freephone)

## Sign up for our e-newsletters



Register now at [www.hillingdon.gov.uk/enews](http://www.hillingdon.gov.uk/enews)

Stay connected and join the 48,000+ residents who have registered to receive our online updates.



[www.hillingdon.gov.uk](http://www.hillingdon.gov.uk)

Learn Hillingdon  
 Adult Community Education

## Start learning with us today

Whether you want to learn for work, develop essential skills or improve your health and wellbeing, check out our wide range of courses designed to help you thrive.

SUPPORTED BY MAYOR OF LONDON

[www.hillingdon.gov.uk/adultlearning](http://www.hillingdon.gov.uk/adultlearning)

Don't miss this *fang-tastic* opportunity!

October Half-Term  
**HALLOWEEN THEATRE WORKSHOPS!**

Calling all ghouls and goblins... Join us at this Musical Theatre Halloween Workshop! Step into the spotlight alongside your favourite Villains for a spooktacular experience of fun, music and dance. Costumes encouraged, creativity unleashed!

**WICKED DESCENDANTS**  
**HOCUS POCUS**  
**ADDAMS FAMILY**

DISCOUNT ON ALL 3 DAYS  
 WED 29 - FRI 31

10am to 4pm. Suitable for 7-14 yrs  
 01895 250615  
[discover.hillingdon.gov.uk/theatres](http://discover.hillingdon.gov.uk/theatres)  
 Compass Theatre, Glebe Avenue, Ickenham, UB10 8PD.

SCAN ME

[www.hillingdon.gov.uk/register-your-account](http://www.hillingdon.gov.uk/register-your-account)

## Sign up for paperless e-billing

Help protect the environment by switching to receive your council tax bill digitally

[www.hillingdon.gov.uk/register-your-account](http://www.hillingdon.gov.uk/register-your-account)





# ENROLL NOW

**A-LEVELS**

**COURSES  
FOR CAREERS**

**T-LEVELS**

**APPRENTICESHIPS**

**HNCs & HNDs**



**SCAN  
HERE**

**UXBRIDGE  
COLLEGE**