

HILLINGDON people

News from your council
November/December 2021

www.hillingdon.gov.uk

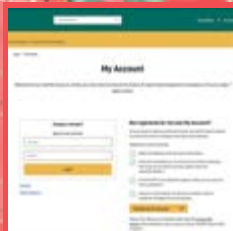
Support your high street

Getting in the
festive spirit

Making our
roads safer



HILLINGDON
LONDON



SIGN UP



BEST IN SHOW



COMMUNITY AWARDS



Primary school admissions

Do you have a child born between **1 September 2017 and 31 August 2018?**
If so, you must apply for a school place by **15 January 2022**

For more information, key dates, how to apply and advice, visit www.hillingdon.gov.uk/schooladmissions or call 01895 556644

HILLINGDON LONDON
www.hillingdon.gov.uk/schooladmissions

Contents

November/December 2021

▶ Cover stories

- ▶ **10 Rural Activities Garden Centre celebrates**
This year, the centre celebrated its 40th anniversary. Find out why it holds such a special place in our hearts.
- ▶ **12 Have a happy Christmas in Hillingdon**
The council will be spreading festive cheer with a range of celebratory events and activities.
- ▶ **14 Shoppers return to our high streets**
Thanks to council investment the borough's hospitality and retail recoveries are in full swing.
- ▶ **18 Hillingdon blooms again**
Residents had their expertise recognised at the council's annual gardening competitions.
- ▶ **20 Shining a spotlight on road safety**
To mark Road Safety Week, we explore the work taking place to educate young people and motorists.
- ▶ **22 Protecting Hillingdon from flooding**
We examine the flood and water management projects recently introduced.

Regulars

- 4 News
- 10 Volunteers
- 25 Older people
- 35 Contacts

Welcome



With Christmas on the way, it will hopefully be a lot different to last year. The council is once again pleased to offer a range of activities and events to help you get into the festive spirit. This includes the annual pantomime at the Compass Theatre, Uxbridge Christmas Market and two new events. Books and Baubles at Manor Farm in Ruislip will feature stalls, arts and crafts activities, a chance to meet authors and Father Christmas and his reindeer. Botwell Green Library's Christmas Family Fun Day will offer a card making workshop, children's crafts and an opportunity to meet Santa and his elves. Our investment in Christmas lighting will ensure that there will be a range of sparkling displays across the whole of Hillingdon; there will be free parking on bank holidays and weekends; and Christmas trees will be available to purchase from the Rural Activities Garden Centre. Read more about this on page 12. I also encourage residents to shop locally this Christmas to support the borough's high streets as they recover following the COVID-19 pandemic. We have an action-packed autumn/winter programme of events underway which showcases the best that our high streets have to offer. To find out more see page 14.

We are also providing support to families in need, and we will continue to help those struggling to meet the cost of food bills, as we have done throughout the pandemic, by providing those eligible for free school meals with food vouchers during the school holidays.

I am pleased that the borough's green spaces have excelled once again at the annual London in Bloom awards and in the Green Flag Award scheme.

The borough was commended for its extremely high standard of horticulture, winning the Large City category once again and receiving six Gold awards at the 2021 London in Bloom competition.

Additionally, Hillingdon has been awarded more Green Flags than any other local authority for the ninth year running. The total number of flags, which acknowledge well-managed parks that meet criteria such as being clean, community-orientated and environmentally friendly, is now 63. You can read all about this on page 19.

Finally, we are pleased to open our annual community awards for nominations. If you would like to thank someone or a team who has gone above and beyond to make a difference to you and your community, I'd encourage you to nominate them so we can celebrate the best of Hillingdon and thank unsung heroes for their contribution to the borough. You can find out how to do this on page 7.

Merry Christmas and Happy New Year,



Cllr Ian Edwards
LEADER OF THE COUNCIL

COVER PHOTO: HILLINGDON RESIDENT FARAH, AGED 7, CHRISTMAS SHOPPING IN UXBRIDGE



Advertising deadline for next edition: **Friday 19 November.**

Editorial and advertising enquiries

- ☎ 01895 556903
- @ hillingdonpeople@hillingdon.gov.uk
- 🌐 www.hillingdon.gov.uk/hillingdonpeople



After reading, please recycle this magazine

Published by **London Borough of Hillingdon** © 2021
Hillingdon People, 35/05 Civic Centre, High Street, Uxbridge, UB8 1UW.
Design Corporate Communications Printed by Paragon Service Point
Products and services advertised in this magazine are not necessarily endorsed by the council.

For a copy in large print or as an audio version call 01895 556903

Christmas and New Year Refuse and Recycling

Thanks to council investment and our committed crews, we are pleased to announce that there will be **no change** to your normal waste and recycling collection days this Christmas and New Year as we will be working during the Bank Holidays: Monday 27 December, Tuesday 28 December and Monday 3 January.

As usual:

- Please leave your rubbish out for collection by 6am.
- Please leave your rubbish near your front gate, but not on the pavement.

If you have any queries, or would like to report a missed collection, visit www.hillingdon.gov.uk/recycling or call 01895 556000.

HILLINGDON LONDON
www.hillingdon.gov.uk

BULKY WASTE COLLECTION SERVICE

We can collect bulky items, such as furniture, fridges, freezers and mattresses.

Collections cost £25 and are free for residents aged over 65 and those in receipt of Personal Independence Payment.

To find out more, visit www.hillingdon.gov.uk/specialcollections

HILLINGDON LONDON
www.hillingdon.gov.uk



Emergency Services Day 2021

On Thursday 9 September, an event was held by the council on the forecourt of the Civic Centre in Uxbridge to mark Emergency Services Day.

A special flag was hoisted at 9.99 – 9am on the 9th day of the 9th month. A two minutes' silence was also held to pay tribute to the more than 7,500 men and women who have been killed in the line of duty in the past 200 years.

Attendees included the Leader of the Council, Cllr Ian Edwards; the Mayor of Hillingdon, Cllr Roy Chamdal; Chief Executive Fran Beasley, staff and representatives from

the Metropolitan Police, London Ambulance Service and London Fire Service.

Leader of the Council, Cllr Ian Edwards, said: "Every day our emergency services show such resilience, strength and bravery in the face of adversity."

"This year's Emergency Services Day was especially poignant as we owe the men and women who work in the emergency services a huge debt of gratitude for all they have done and continue to do as we learn to live with COVID-19."

To find out more, visit www.999day.org.uk.

Tenancy fraudsters face justice after 10-year deception

A three-year council investigation has resulted in a mother and son from Hayes being prosecuted for tenancy fraud.

For 10 years, Doreen Bailey, aged 68, and her son Neil Mockford, aged 38, failed to inform the council that Doreen no longer lived at her council property at Hobart Lane, Hayes. Both pleaded guilty to fraud by failure to disclose information and making false representations to continue the tenancy.

At Isleworth Crown Court on Tuesday 14 September, Bailey and Mockford were each sentenced to 120 hours unpaid work and a £500

penalty. Mockford was also given a nine-month suspended prison sentence. The property was recovered by the council in 2019.

The case came to light following an anonymous tip-off, which started the investigation. Officers from the council's counter fraud team discovered that between 2008 and 2018, Doreen Bailey (previously known as Mockford) claimed to be living at the four-bedroom property despite moving to a different address in Hayes after remarrying in 2008. In February 2012, she falsely signed her tenancy verification form in her former surname, declaring



Stamping out Blue Badge fraud

This summer, an operation was carried out by the council at Ruislip Lido to check that disabled Blue Badge permits were being used legally.

Between Monday 26 July and Sunday 22 August, 50 badges were inspected by officers from the council's business assurance counter fraud team. Eight badges were seized for improper use, including four expired badges.

Following the operation, officers from the council's parking services and business assurance counter fraud teams launched investigations into three cases of suspected misuse. One investigation has already concluded, and an offender has been issued with a fine and caution for misusing their Blue Badge.

Cllr Martin Goddard, Cabinet Member for Finance, said: "Blue Badges are there to help people who are disabled and

in genuine need. While the majority of residents use their badge correctly, unfortunately a small minority abuse the system.

"Thanks to the recent work carried out by our teams, we're catching up with those we've found breaking the law. If you suspect someone is misusing a Blue Badge, please report it."

Blue Badges provide parking concessions for people with disabilities, allowing them to park closer to their destination. To find out more and check the eligibility criteria, visit www.hillingdon.gov.uk/blue-badges.

Report suspected Blue Badge fraud at www.hillingdon.gov.uk/reportfraud, call 0800 389 8313 (Monday to Friday 9am to 5pm) or email fraud@hillingdon.gov.uk. Successful prosecutions result in a criminal conviction and a fine of up to £1,000.

she was still occupying the Hobart Lane property.

Her son – who was living in the property – continued the deception by falsely completing electoral records (on eight occasions) declaring his mother was staying at the council property. He was also caught lying to enforcement officers who visited the property in June 2018. He claimed that she was on holiday at the time of the visit but was unable to explain when she would return.

Their fraudulent activity meant the council was potentially out of pocket by £161,000 – the equivalent cost to house a family in

need in emergency accommodation over a 10-year period.

Cllr Martin Goddard, Cabinet Member for Finance, said: "For more than a decade, Bailey and Mockford cheated the housing system and thought they could get away with it. However, thanks to the work of our counter fraud team, their blatant dishonesty and attempts to cover up their fraudulent scheme caught up with them."

"I hope this case serves a reminder to those who think they are above the law. We won't hesitate to take the same action against anyone else caught making fraudulent claims."

New Harefield reuse centre

Donate unwanted items or pick up a bargain the next time you visit Harefield Civic Amenity site in New Years Green Lane.

The council's new reuse centre opened in September and residents can bring along good quality items to be upcycled or reused while also browsing a large selection of quality, affordable household items to take home.

Everything from tables, chairs and storage boxes to toys, chests of drawers, cabinets and unchipped crockery can be donated, and while there are no prices on individual items, the council is encouraging local people to donate something each time they take an item away.

All proceeds will go to the Mayor's chosen charities. Find out more by visiting www.hillingdon.gov.uk/mayor.



UPCYCLE AND REUSE
Cllr Eddie Lavery and refuse recycling officer Orla O'Brien at the Harefield site

The reuse centre is located to your right once you drive through the barriers. The centre cannot accept any textiles

or electrical items such as TVs or hairdryers.

To find out more, visit www.hillingdon.gov.uk/harefield-civic-amenity.

Hillingdon's waste and recycling team win prestigious award

The council's waste and recycling service won the Best Partnership Award at this year's Local Authority Recycling Advisory Committee Awards (LARAC) which took place on Wednesday 6 October.

The team won the prestigious award for their partnership work with the NHS on needle collections. The collaboration has resulted in a high demand from residents for the council's clinical waste service for sharps collections. The joint work has also prevented needle injuries to waste crews and staff at the sorting plant.

When the council needed a solution to stop

recycled waste being contaminated with needles they enlisted the help of the NHS via pharmacies, health centres and hospitals. Many residents, through no fault of their own, were unsure what to do with used needles as they are made from recyclable materials, therefore they would place them in their recycling bags.

Both the council and partners from the NHS worked together to promote the clinical waste sharps collection service.

The success of the partnership has seen an increase in demand of 110 per cent between March 2021 and August 2021 - and an additional

collection day was added to the service. The joint work has also recorded no needle injuries to crews.

If you need to dispose of needles, syringes, lancets and needle clippers – please do not contaminate your general waste and recycling.

Sharps boxes are available from your GP or pharmacy in a variety of sizes, depending on your needs. To book a monthly or one-off collection of your full sharps box(es), call us on 01895 556000 (sharps boxes are no longer accepted for disposal by GPs, pharmacies or hospitals).



WINNING TEAM
Council staff with the LARAC organisers

CCTV footage released in latest fly-tipping crackdown

CCTV footage is being released as part of a new campaign to help tackle fly-tipping in Hillingdon.

In September, the council launched a CCTV witness appeal campaign to help identify and prosecute those caught illegally dumping rubbish in our streets and open spaces.

Each month, a new witness appeal video is shared across the council's social media channels in a bid to find the offenders. The videos are only published



after officers have explored every avenue possible to try and identify those involved.

The campaign aims to raise awareness in hotspot areas and council officers will continue to carry out outreach work advising residents and

businesses how to dispose of their waste correctly.

Reports of fly-tipping continue to fall across Hillingdon and between January 2021 and September 2021, incidents were down by 22 per cent. The council hopes that this

new campaign will drive down rates even further.

Fly-tipping can be reported easily on the go using our mobile-friendly website - all you need to do is give us the location, the description of the fly-tip and, if possible, a photo.

Anyone caught fly-tipping can be issued a fine of up to £50,000, or face a custodial sentence.

To report a fly-tip or to find out more visit www.hillingdon.gov.uk/flytipping.

Youngsters enjoy Summer Reading Challenge fun

More than 5,600 children aged between four and 11 took part in this year's Summer Reading Challenge.

Its environmental theme, Wild World Heroes, aimed to inspire young people to consider the ways they could improve the environment.

The challenge, which is run annually by The Reading Agency, encourages children to visit their local library and collect rewards for borrowing books during the summer holidays.

Hillingdon Libraries also ran a variety of virtual and outdoor activities which tied in with this year's theme. Highlights included two outside events with

poet Justin Coe, where he read and sang his poems and also created a poem with the young residents' help. Four interactive online

sessions with storyteller John Kirk brought the story to life by getting children involved in scavenger hunting in their own homes.

The service also held a wild photography competition, which was open to those aged between four and 18. More than 150 submissions were entered, and the winning entries and runners-up will be showcased at an exhibition in Uxbridge Library until Tuesday 16 November.

Cllr Susan O'Brien, Cabinet Member for Families, Education and Wellbeing, said: "The Summer Reading Challenge is a great initiative that helps children to remain engaged with reading and encourages new readers during the summer holidays. This year's theme also provided a wonderful way to help young residents think about the important issues around climate change and the environment. I hope everyone who took part enjoyed all of the activities."

ILLUSTRATIONS © HEATH MCKENZIE 2021



Popular Woodland Centre at Ruislip Lido gets makeover

The Woodland Centre at Ruislip Lido has been given a visitor-focused refurbishment to help residents discover more about Ruislip Woods and local wildlife.

New interactive displays, boards and hands-on activities will educate visitors of all ages and inspire them to get out and explore the woods, and understand more about the trees, plants and animals they will discover.

The newly revamped centre was formally opened by the Mayor of Hillingdon, Cllr Roy

Chamdal, and Cllr Eddie Lavery, Cabinet Member for Environment, Housing and Regeneration on Friday 24 September.

The project was jointly funded by the council, the Grondon Landfill Fund and the Heritage Lottery Fund, and the refurbishment was organised by the Ruislip Woods Trust as part of the Colne Valley Lottery Landscape Partnership Project.

The revitalised centre makes the visitor experience far more immersive, with a new



GOING FOR GOLD
The male hockey team, coaches and Mayor of Hillingdon, Cllr Roy Chamdal

Young athletes honoured

The Mayor of Hillingdon, Cllr Roy Chamdal, hosted an awards ceremony last month to acknowledge the achievements of the borough's young athletes who took part in this year's London Youth Games (LYG).

More than 50 young people, team coaches and parents attended the evening on Thursday 7 October in the Mayor's Parlour at the Civic Centre where the Mayor presented the young people with certificates.

Hillingdon hosted one of the LYG weekends at Brunel University on Saturday 28 August with our young people participating in the netball, male football and male and female hockey knock-outs.

Lake Farm Country Park in Hayes also hosted the

BMX event which was the first all borough event to be held in the 2021 games in Hillingdon.

Our young people scooped medals in around 90 per cent of their individual events. Other highlights included gold for BMX and female football, and silver in sailing and netball.

Cllr Susan O'Brien, Cabinet Member for Families, Education and Wellbeing, said: "All of our young people who took part in this year's games should be extremely proud of themselves. I encourage any young residents who might be interested in getting involved in next year's games to get in touch."

Find out more at www.hillingdon.gov.uk/youth-games.

interactive video display and hands-on educational elements, such as learning how to do hazel fence-weaving using a leather strap.

There are stunning displays across the walls

featuring the huge range of flora and fauna found in the woods, with elements that can be changed with the seasons to reflect how life in the trees changes at different times of the year.



NEW OPENING
Councillors and the project partners

Nominate unsung heroes for the Hillingdon Community Awards

The council's community awards have officially opened and it's now your chance to say thank you and nominate an individual or team who has gone above and beyond to make a difference to you and your community.

There are people who are working tirelessly behind the scenes to make the borough a special place to live, work and visit. It could be something as simple as helping someone with their shopping, delivering food or volunteering to make a difference to a local community, or even

befriending, caring, or saving someone's life.

The coronavirus (COVID-19) pandemic has highlighted the fantastic contribution from local people in Hillingdon in helping their neighbours, their community, those most vulnerable and most in need of support – all at a time when things seemed so uncertain.

The awards recognise and celebrate the best of Hillingdon and are open to both volunteers and the wider community.

If you know someone or a team that deserves recognition for making a

difference, nominate them today by filling in a short form explaining what they do at www.hillingdon.gov.uk/community-awards. Paper copies are also available in the borough's libraries. Nominations are open until Friday 31 December.

Leader of the Council, Cllr Ian Edwards, said: "I am delighted to open our annual community awards. It's our way of saying thank you to the unsung heroes in Hillingdon. These are the people who have gone above and beyond the call of duty to make a difference to the lives of others and

their communities. This has especially been highlighted throughout the COVID-19 pandemic where so many people have stepped up and helped those around them, those most in need or who may have otherwise been isolated.

"To get a true picture of how great our borough is, the awards are open to anyone making a difference. If you know someone who deserves recognition for the work they do for Hillingdon and our residents, please nominate them for a community award so that we can celebrate and thank them for their contribution."

Supporting families this winter

Low-income households in Hillingdon are set to receive extra support with food, energy and water bills this winter as part of the government's Household Support Fund.

The council is administering the grant and has been allocated a total of £2 million to be available to support local people.

One-off payments of £100 per household are available to help residents in receipt of certain benefits who are responsible for paying the utility bills.

Families whose children are eligible for free school meals will receive vouchers directly from the council of £15 per child, per week to assist with the cost of food during the school holidays to cover the period until March 2022. During the summer, the council distributed vouchers to more than 9,000 children.

The fund will also be available for other essential costs this winter such as emergency boiler and heating repairs for those that are eligible.



Leader of the Council, Cllr Ian Edwards, said:

"We're committed to supporting residents and businesses as we recover from COVID-19. The colder months can bring additional financial hardship and we're working hard to process the applications as quickly as we can to alleviate some of the pressure being felt by our families."

To be eligible for a grant and/or food vouchers, you must live in a household with children aged under-19 and be in receipt of certain benefits or be known to the council's adult or children's social care teams. The scheme will run until Thursday 31 March 2022.

For more information and details of the eligibility criteria, visit www.hillingdon.gov.uk/household-support-grant or email wintergrant@hillingdon.gov.uk.

EDIBLE ENGLAND
Open day at Manor Farm



Heritage Open Day events

Hundreds of residents enjoyed a week full of fun, food and history as Hillingdon celebrated Heritage Open Days 2021.

Heritage Open Days is England's largest festival of history and culture, bringing together more than 2,000 local people and organisations.

The theme for this year's event was 'Edible England' and alongside the always-popular classic car show at Eastcote House Gardens and general local history events there were a variety of food-related activities.

The majority of council-run events took place from Friday 10 to Sunday 19 September across Manor Farm (Ruislip) where visitors enjoyed a

nature walk, planted lemon pips and heard a talk on 'The Middlesex Diet'.

Further events and activities were hosted at Cranford Park, Eastcote House Gardens and Uxbridge Library.

Cllr Susan O'Brien, Cabinet Member for Families, Education and Wellbeing, said: "The event is a real celebration that creates the tapestry of today's Hillingdon and offers a chance for residents to learn some of the fascinating background facts of where they live today from a time gone by."

Discover and explore some of Hillingdon's fascinating heritage sites with our online tours www.hillingdon.gov.uk/open-house.

New partnership brings high-speed fibre broadband

Residents are set to enjoy better internet connections thanks to a new partnership between the council and broadband provider Community Fibre.

As part of the agreement, up to 10 community buildings in Hillingdon will benefit from free high-speed fibre broadband connections to Community Fibre's network. The building locations will be announced at a later date.

Community Fibre will bring its 100 per cent full fibre broadband network to more than 10,000 homes and businesses in the borough, offering reliable, high-speed internet connectivity up to 3 gigabytes per second (Gbps) for consumers and up to 10Gbps for businesses.

Bringing Community Fibre's high-speed connections to the community will mean local residents can enjoy fast, reliable internet and access essential services. Connections will be focused across the borough's communities to minimise digital exclusion.

The council and Community Fibre will also work together to actively recruit and train local residents to be part of Community Fibre's Digital Ambassador Programme.

Through the programme residents will receive training to

become qualified 'Digital Ambassadors', local specialists who'll provide help to anyone in their community, enabling them to become more confident online. The ambassadors in turn can develop their own skills while helping to guide and educate others.

The scheme aims to address digital exclusion by teaching everything from the basics of email and social media to building your own website.

Cllr Douglas Mills, Cabinet Member for Corporate Services and Transformation, said:

"We're delighted to be partnering with Community Fibre to further enhance our status as one of the best-connected boroughs.

"A key aim of our digital strategy is to support local communities to ensure people are not digitally excluded. By connecting community buildings we're bringing high-speed broadband to the hearts of areas that need it most.

"Together with their Digital Ambassadors programme, this new partnership will be a catalyst in generating communities which are healthier by being better connected."

Find out about Community Fibre and the Digital Ambassador Programme at www.communityfibre.co.uk/community-connect.



Full steam ahead for borough's station upgrades

A raft of improvements to the streetscape around Hayes & Harlington and West Drayton stations are planned ahead of the introduction of the new Crossrail route next year.

In Hayes, the council is using £3.5 million of funding from TfL and local land and property developer contributions (£106 agreements) to deliver a range of enhancements along Station Road and Blyth Road.

The improvements, which are currently underway, include new paving, more energy-efficient LED streetlights; cycle lanes, as well as cycle stands, bins and benches. Bus stops have also been extended to accommodate new services such as the new 278 route which connects Ruislip to Heathrow via Hayes.

Early next year, works will start on the installation of a new permanent light and sound feature at the Blyth Road underpass to honour the work of Alan Dower Blumlein, an engineer who invented stereo sound.

Next summer, a clock tower will be introduced in the heart of Hayes where passersby will be able to listen to recorded music which reflects the area's connection to EMI. The new clock is also in keeping with the iconic gold disc-shaped seated canopy area which was installed in June 2018.

In West Drayton, the council is using £1.6

million of funding from TfL and local developer contributions to carry out improvements to the area surrounding the station.

In 2018, new paving and resurfacing works took place along Warwick Road and West Drayton Bridge was cleaned, sealed, new lighting installed and a bespoke mural, made of a series of durable enamel panels, was installed under the bridge, celebrating the heritage of both Yiewsley and West Drayton.

The council is also working with landowners Network Rail to finalise improvements along Station Approach which include new paving, lighting and reconstruction of the carriageway to repair damage caused by a broken water main. The works are expected to commence in early 2022.

Cllr John Riley, Cabinet Member for Public Safety and Transport, said: "These stations are used by many of our residents who travel into and out of central London and beyond, and I'm delighted that TfL has introduced step-free access at both locations.

"The wider improvements being carried out by the council will help to revitalise Hayes and West Drayton, and also complement the introduction of Crossrail which is already bringing wider economic benefits to the areas."

Need to contact us? Join the thousands doing it online

Since June, our teams have handled more than 37,000 reports or requests. More than 77 per cent of these were made digitally via our new-look website. In addition, 27,286 residents have now registered for a new online MyAccount, allowing them to view and check the status of reports and requests in one place, 24 hours a day, seven days a week. Find out how you too can enjoy the flexibility of contacting us online.

Registering for a new MyAccount is quick and easy:

- Open your web browser and go to www.hillingdon.gov.uk/myaccount
- Select the 'Register for a MyAccount' button.
- Enter your email address. You will then be sent an email containing a PIN. Please check your spam/junk folders if the email doesn't immediately appear in your inbox.
- Enter the PIN on the registration page to verify your account and set up a password.
- Sign in and add your contact details, including your address. This is needed for HillingdonFirst card requests. Your registration is now complete.

In this increasingly digital world, we want you to be able to get in touch with us on whatever device you're using, at whatever time is convenient to you, without having to queue on the phone.

Over the past two years, we've transformed our website and made it easier to report, request, apply or book. Whether it's telling us about a problem in your road, asking us for more recycling bags, ordering a new HillingdonFirst card, or something else entirely, use the search box located at the top of every web page to find what you're looking for, and then complete one of our digital forms.

You don't need a MyAccount to access information on our website or fill in one of our web forms. However, having a MyAccount will allow you to check how we're doing with your request once you've submitted it. So, if you haven't done so already, create an account today. You'll need to do this even if you used the 'do it online' services on our old website.

Get started by visiting www.hillingdon.gov.uk/myaccount



Cllr Douglas Mills, Cabinet Member for Corporate Services and Transformation, said: "It has never been quicker or easier to contact the council online. We've updated and simplified our website, making it much easier for residents to report or request something while they're on the go, and our new MyAccount allows people to check on our progress. Ultimately, it's more flexible and convenient for our residents, and it's more efficient and cost-effective for us.

"Residents can expect to see us maximising the use of digital platforms in future, with more services provided online and a more personalised experience when people log in."



PARTY TIME
Councillors, gardeners, staff and volunteers celebrate four decades of the RAGC

Rural Activities Garden Centre celebrates 40 wonderful years

This year, Hillingdon's Rural Activities Garden Centre (RAGC) celebrated its 40th anniversary. *Hillingdon People* spoke to its gardeners, staff and volunteers past and present to find out why it holds such a special place in our hearts.

On Thursday 16 September, the Mayor of Hillingdon, Cllr Roy Chamdal; the Mayoress Reeta Chamdal; Cllr Eddie Lavery, Cabinet Member for Environment, Housing and Regeneration and more than 80 guests came together to mark the joyous occasion.

Cllr Lavery, said: "The sun shone as guests danced to disco classics and enjoyed a barbecue, ice-cream – and, of course, cake – in fact there were two cakes to celebrate such an important milestone!

"It was a great honour to come along and meet so many wonderful people and to hear first-hand how much the RAGC means to them."

Located on West Drayton Road in Yiewsley, the centre first opened its doors in 1981. It started life as a small shed and a couple of fields and has expanded over the decades occupying a two-acre site today.

With the support of councillors, volunteers and the local community

the centre has flourished. The site holds one of Hillingdon's 63 Green Flag awards – the highest number of any local authority in the country – and the centre has also scooped multiple Gold awards at the prestigious London in Bloom awards for its horticultural, educational and outreach work.

The centre sells a wide range of bedding plants, shrubs, herbaceous plants, planters and Christmas trees at competitive prices. Seasonal fruit, vegetables, jars of honey and garden accessories can also be purchased from a shop located on the site.

Providing educational and employment opportunities

The RAGC provides educational and supported employment opportunities for local people who have additional needs.

Adults with physical disabilities, learning difficulties and mental health conditions can develop their horticultural skills and gain new-found



TIME FOR CAKE
Mayoress Reeta Chamdal and Mayor Roy Chamdal

confidence and independence through a unique council-run scheme.

Known as gardeners, they work closely with the centre's volunteers and seven horticultural therapists who use gardening, plants and horticulture to help residents improve their physical and mental health.

Since the scheme launched in 1981, the RAGC has supported hundreds of gardeners and volunteers - many of whom have gone on to secure paid employment elsewhere as a direct result from volunteering and acquiring new skills.

The centre works with various partners including Hillingdon Autistic Care and Support; Meadow High School; Brookfield Adult Education Centre; Uxbridge College and the council's library service.

Jeff Sarnicki, RAGC Manager, said: "We've learnt throughout lockdown just how valuable face-to-face contact means to us all and that's why it's great to have fully reopened and be able to

work alongside our volunteers and gardeners again.

"I've worked at the RAGC since 2014 and I'm so proud of what the team has achieved and how we've given opportunities for individuals to make a positive difference to their own lives. We couldn't do what we do without the support of the community, so the next time you need a few plants for the garden come down and see what we have to offer!"

Here's what a few of our gardeners and volunteers had to say:



Johnny Walker, aged 28 from Ruislip, volunteered at the RAGC from 2016 to 2020. He said: "When I volunteered at the centre I helped out with weeding, watering, making bark chippings and I really enjoyed working there. I made lots of new friends and it gave me the confidence I needed to secure full-time employment, and I joined the council's street cleansing team in April 2021."

Krishna Chapman, aged 59 from Ruislip, said: "I started volunteering in June after I retired and I work alongside the gardeners and I enjoy weeding, potting the plants and it's been great to give something back to the community."



Brenda Gardner, aged 77 from Eastcote, said:

"I've been volunteering here for 28 years and joined when I retired. I love gardening, meeting people, and being outdoors - it's much better than being stuck at home."



Grace Andrews, aged 18 from Hillingdon, said: "I began volunteering in 2020 doing a bit of weeding, planting and helping out with deliveries and orders. I recently started a weekend job at the centre working on Saturdays and Sundays, and I really enjoy it and it fits in with college."

Get gardening and get involved

Would you like to volunteer? If you like gardening and the great outdoors, a range of volunteering opportunities are available which include working in the shop, preparing orders, potting, weeding and many other horticultural activities.

You'll need to be able to commit to at least three hours a week and undergo an enhanced DBS check.

To find out more, please contact Jeff Sarnicki at jsarnicki@hillingdon.gov.uk.



Cllr Douglas Mills, Cabinet Member for Corporate Services and Transformation, said:

"Being outdoors and gardening has a range of physical and mental health benefits. The close-knit community at the RAGC has helped so many residents to thrive by developing new friendships, learning new skills and developing new-found self-confidence to go on to secure employment.

"It's a unique volunteering opportunity so get in touch with the team or visit the centre to find out more."



Commemorative tea towel now available

If you need some inspiration for a Christmas gift and would like to support the centre, a special tea towel is available to purchase for £4 to celebrate the RAGC's landmark birthday. It was made by 37 gardeners and volunteers who worked closely on the design.

Andrew and Alan Walsh, aged 60 from Uxbridge, worked on the special project (pictured above). Alan said: "We helped to design the tea towel and we were asked to draw a special memory of what the RAGC means to us. I drew a picture of dragonflies and Andrew drew a picture of a watering can."

Fancy a cuppa?

The Rural Tea Room is located in the RAGC's ornamental garden.

It serves a delicious range of jacket potatoes, sandwiches, sweet treats, afternoon tea and hot and cold drinks.

The café is run by volunteers from Hillingdon Autistic Care and Support (HACS). It provides training for young people living with autism and all profits are reinvested in the charity.

Find out more by visiting www.hacs.org.uk/rural-tea-room.



The RAGC is open seven days a week. Find out more by visiting www.hillingdon.gov.uk/ragc and their Facebook page www.facebook.com/ruralactivitiesgardencentre

Have a happy Christmas in Hillingdon

During November and December, the council will be spreading festive cheer with a range of activities and initiatives, including colourful lights, free parking and celebratory events.



Visit your local lighting display

From late November, you won't have to venture far to get into the Christmas spirit, as the council is investing £241,000 on sparkling displays and Christmas trees in 28 locations across all 22 wards.

Four community-led schemes will also be supported by the borough, which will see lights and events hosted by the Ickenham Festival, Northwood Hills Residents' Association, Ruislip

Manor Chamber of Commerce and Northwood Residents' Association.

For the first time, the council will also be piloting the removal of timers from the displays so that residents can enjoy the lights throughout the entire day, rather than just from late afternoon. As well as illuminating the borough for longer, the lights will also save money by eliminating the need for night-time maintenance and timer repair costs.

Christmas light switch-on events will also take place (COVID-19 dependent) in November and December and further details will be available via our social media channels and on the council's website at www.hillingdon.gov.uk/christmas.

Read more about the council's work to support businesses as they recover from COVID-19 on page 14.

Festive fun at the Compass

This Christmas will see a range of seasonal events and productions hosted at the Compass Theatre again, including the chance to meet Santa at *The Santa Show* and a volunteer-led production entitled *Compass Christmas*, which will celebrate all things festive.

Be our guest at this year's *Beauty and the Beast* pantomime, which

will be produced by long-term production partner David Kemp Productions Limited. It is written by and also stars Ickenham's favourite panto dame, Niall Hemingway.

For more information and tickets, visit www.hillingdontheatres.uk or call the box office on 01895 250615

Botwell Green Library will host their Christmas Family Fun Day on Saturday 18 December, from 10.30am to 3.30pm. Activities will include a create your own light up Christmas card workshop, the chance to meet Santa and his elves, and a children's craft event with Margaret Bateson-Hill, author of *Leah's Star*.

If you're interested in taking part in the workshop and craft event, email botwell-library@hillingdon.gov.uk.

For a full list of activities, visit www.hillingdon.gov.uk/christmas

Christmas market returns

Uxbridge town centre's Christmas market will be back this year between Wednesday 17 November and Tuesday 28 December and will feature 30 wooden chalets offering a range of gifts, seasonal delicacies and mulled wine. The market will also host fun activities for all of the family to get involved in, choir performances, a Christmas train, live music, a birds of prey exhibition and more.



Buy your Christmas tree at the RAGC

The Rural Activities Garden Centre in Yiewsley will be selling real Christmas trees from Wednesday 1 December. The centre will have a wide selection of Nordman non-drop cut trees and a range of homegrown potted trees, wreaths and other decorative accessories for sale.

Festive guide to refuse and recycling

During Christmas and New Year, most households generate more waste than usual – and a lot of it could potentially be recycled or reused.

It is also important to remember that as the mornings are getting darker, you must ensure that your bags and caddy are placed at your property boundary, so they are visible to our crews. It is also important that your items are left outside before 6am on your collection day so your refuse and recycling is not missed.

Follow our tips below to help you further reduce your waste and protect the environment.

kitchen caddy and liners provided by the council. Before throwing out leftovers, consider creating a new dish or perhaps freezing them? Caddy liners should also be stored in a cool, dark and dry place to prevent them from beginning to break down prematurely.

Christmas trees

You can recycle your Christmas tree with our usual garden waste collections in January. The tree, like your other waste and recycling bags and caddies, should be visible to crews and placed at the edge of your property boundary on the day of your collection. If you live in a flat, email wastesupervisor@hillingdon.gov.uk to request a collection from Tuesday 4 January. Trees should be placed next to your bin store or collection point for waste and not blocking access to bins. All decorations and pots must be removed and trees taller than six feet must be cut in half. Artificial trees should be taken to Harefield Civic Amenity Site or our West Drayton waste weekends, or a collection arranged through the council's bulky waste collection service.

Food waste

Food waste can be recycled by houses and maisonettes with private gardens in the borough using the free

For more information on waste and recycling, visit www.hillingdon.gov.uk/rubbishandrecycling

Park for free this Christmas

To ensure your Christmas shopping experience is an enjoyable one and at the same time supporting the borough's high streets and businesses, the council will once again provide free parking on weekends during the festive period.

Residents can use their HillingdonFirst card to enjoy this offer in our council-owned car parks and on-street parking bays on:

- Saturday 4 and Sunday 5 December
- Saturday 11 and Sunday 12 December
- Saturday 18 and Sunday 19 December

Remember to take your card with you and follow the instructions on the pay and display machines when getting your ticket to make sure no charge is applied.

It will also be free for all residents and visitors to park at each of the council's car parks and on-street parking bays on:

- Saturday 25 December
- Sunday 26 December
- Monday 27 and Tuesday 28 December
- Saturday 1 to Monday 3 January

Our HillingdonFirst card also offers discounts at a range of local businesses, which can help reduce the cost of Christmas shopping. For more information and to apply for a card, visit www.hillingdon.gov.uk/hillingdonfirst.



Leader of the Council, Cllr Ian Edwards, said:

"The last two years have been a challenging time for us all, but this Christmas I am very pleased that we are able to bring back many of our well-loved festivities, such as the library and theatre events and Christmas markets which I hope you all enjoy. I also encourage everyone to shop locally and make the most of our free parking offer to support the borough's high streets, especially as they recover following the pandemic. Lastly, I wish you all a very happy Christmas and New Year and hope you can enjoy this special time safely with your loved ones."



A sleigh-full of free local library events

Hillingdon Libraries will be holding a variety of activities and events for residents of all ages during December, from Christmas arts and crafts sessions to festive performances for all of the family. There will also be two very special events taking place as part of the programme.

Manor Farm will be organising Books and Baubles, its very own winter wonderland, on Sunday 12 December, between 10am and 4pm. The day, which will be hosted in partnership with Ruislip's famous Duck Pond Market, will feature festive craft stalls and booksellers in the Great Barn, a Santa's grotto and book giveaways at Manor

Farm House and an array of author events in the Stables including a *Bridgerton* writing workshop.

Street performers, and live theatre will also be taking place across the site, while arts and craft activities will be happening in the Community Hut. Additionally, Santa's reindeers will be available for petting and photo opportunities. Later that evening, Veronica Henry will be making an appearance for her very own author event from 7.30pm.

No booking is required for entry to the site, but you do need to register for the workshops and author events beforehand at libraryevents@hillingdon.gov.uk.

Shoppers return to Hillingdon's high streets

The borough's hospitality and retail recoveries are in full swing. *Hillingdon People* examines how businesses are reaping the benefits and finds out more about the events which are delighting residents and visitors of all ages.

During the lockdowns, the council was putting in place an ambitious blueprint to help local businesses recover from the impact of COVID-19. In July, the council appointed brand, design and communications agency Whistlejacket London; high street regeneration specialist Retail Revival Ltd; and Meristem Design, an agency which specialises in creating bespoke green solutions for public spaces to support businesses with their recovery until February 2022.

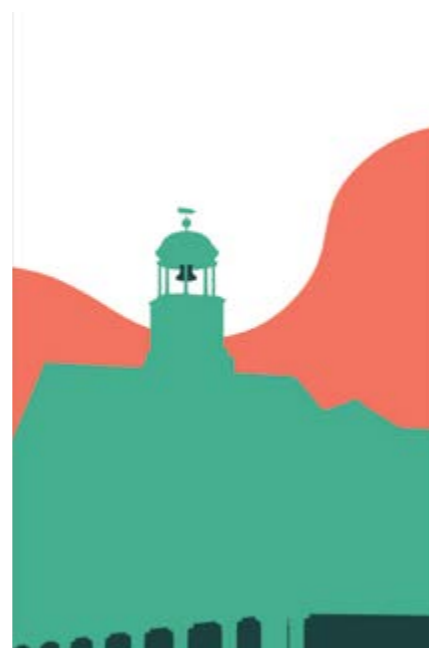
Whistlejacket London was commissioned to develop 'Welcome Back' branding to highlight how Hillingdon is open for business and that it's safe for shoppers to return. Each of our town centres have been given a visual identity featuring recognisable landmarks to celebrate the distinctiveness of the borough's high streets. This branding will feature on tote bags and hand sanitising stations, and will help foster a sense of pride and belonging within the local communities around each of these important centres.

High streets events programme underway

An action-packed autumn/winter programme of events is underway to showcase the best that our high streets have to offer.

On Friday 1 and Saturday 2 October, the programme launched with The Heritage of Uxbridge Festival, which was an opportunity for visitors to celebrate our borough's rich and diverse past.

The rain didn't dampen spirits as residents took part in an art treasure trail and toured 12 businesses dotted around the town centre to find artworks of famous Uxbridge residents through the ages and those who have a strong connection to the town. Famous faces included Prime Minister and MP for Uxbridge and South Ruislip Boris Johnson, engineer Isambard Kingdom Brunel, boxer Audley Harrison, astrologer Russell Grant, Claire Richards from Steps and notorious eighteenth-century highwayman William Hawke. Artworks were created by students at Uxbridge College and residents



who successfully completed the trail received an art kit as a prize.

The Pavilions shopping centre hosted a Children's Comedy Club to celebrate Brunel University's link to some of Britain's top comedians (former alumni include Lee Mack, Greg Davies and Noel Fielding). Children also took part in workshops to perfect their joke-telling skills and even took to a pop-up mini stage to test them out on the crowd.

They also enjoyed special effects face painting, making *Star Wars* glitter tattoos and decorating cupcakes. These activities paid tribute to the life and work of former Uxbridge resident John Stears who was a two-time Academy Award-winning special effects expert. He worked on the first eight *James Bond* films, *Star Wars* and many other Hollywood blockbusters. Chewbacca even made a special guest appearance and entertained both young and old.



ASSAULT COURSE
Alfie Dunford takes on the challenge

The more energetic young people competed in a Battle of Britain assault course and their time was recorded on a leader board with each participant winning a chocolate medal.

During the October half-term, from Tuesday 26 October to Friday 29 October, a Pumpkin Festival was held in Ickenham, Eastcote, Yiewsley, West Drayton and Ryefield Avenue, Hillingdon.

Activities included arts and crafts stalls, cookery demonstrations, a library cartoon club (at Ickenham, Yiewsley and West Drayton), pumpkin carving and pumpkin trails in shop windows.

On Saturday 30 October, the Hayes Music Fun Day paid tribute to the town's connection with EMI Records which put the area at the centre of musical innovation for decades. Crowds danced to live music performances under the gold disc-shaped canopy in the centre of Hayes. Children took part in music-themed craft activities such as drum making, face painting and badge making in pop-up tents along the high street. Musical taster sessions were held in St Anselm's church under pop-up gazebos where residents of all ages tried out instruments such as drums, guitars and keyboards.

Remembering Cllr Fyfe

On Monday 15 November, a tree-planting ceremony will take place at Kingshill Avenue, Hayes to commemorate the life of Cllr Neil Fyfe. Cllr Fyfe passed away in November 2020 and the event



STAR WARS
Angela and Aria Azizi with Chewbacca enjoying arts and crafts



FEELING FESTIVE
The McQuaid family Christmas shopping in Ruislip Manor

will be attended by his family and friends and will be followed by the switching on of the Kingshill Parade Christmas lights by the Mayor of Hillingdon, Cllr Roy Chamdal. The council has been investing significant sums to improve the environment at Kingshill Parade, a programme of work that had been dear to Cllr Fyfe.



OPEN FOR BUSINESS
Uxbridge welcomes back shoppers

Dates for your diary

Ruislip Manor Christmas lights switch-on

Saturday 20 November, from 11am to 6pm

Get into the Christmas spirit and enjoy a treasure hunt, street market, live music and dance performances, Father Christmas' grotto, and much more. The Christmas lights will be switched on by Father Christmas and Rudolph at 4.30pm.

Kingshill Avenue Christmas event

Saturday 27 November, from 11am to 4pm

Come along to the bustling shop parade and enjoy arts and crafts, meet Father Christmas and join in a trail to find the reindeer in shop windows. Completed entries will win a chocolate reindeer treat.

Harefield Christmas tree lights switch-on

Thursday 2 December, from 2.30 to 6.30pm

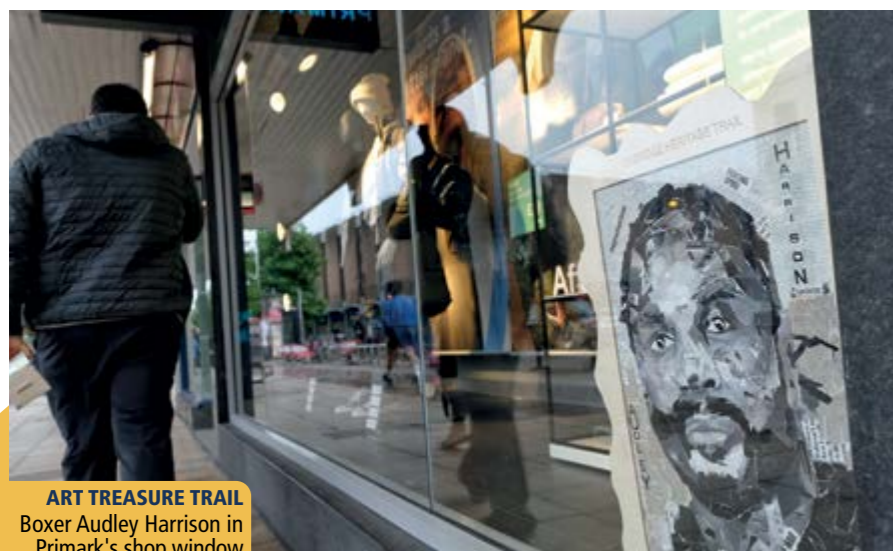
Take part in a trail to find Rudolph in shop windows, meet Father Christmas, get creative at one of the many arts and crafts stalls and join in carol singing ahead of the Christmas tree lights switch on at 6pm.

Ruislip Lantern Festival

Sunday 19 December, from 10am to 4pm

Pick up a few last-minute Christmas gifts, take part in a special shop window lantern trail, browse arts and crafts stalls and end the afternoon of fun by joining in a magical lantern procession along the high street.

To find out more about the events programme, visit www.hillingdon.gov.uk/supporting-high-streets



ART TREASURE TRAIL
Boxer Audley Harrison in Primark's shop window

Supporting outdoor dining

Temporary street furniture is currently being trialled in Uxbridge, Eastcote, Northwood and Ruislip to support outdoor eating before being rolled out to other town centres.

Planters and foldable tables and chairs have been provided for hospitality businesses to create attractive outdoor dining spaces

Temporary public pavement extensions, known as 'parklets' have been installed in Eastcote and Ruislip town centres to provide additional outdoor dining capacity and a space for people to sit, relax and enjoy their surroundings.

Hovig Yardim, Managing Director of TAG Drinks, (pictured right) said: "TAG is one of the many businesses in Eastcote that has recently received planters to support outdoor dining and our recovery from the impact of COVID-19. This fantastic initiative from the council has not only allowed our outdoor seating area to look more colourful and organic, but has helped tie various businesses together with a theme of continuity along the high street."

Nabeel Ahmed, director of Lahore Eastcote, said: "We wish to thank the council for providing outdoor planters, as well as outdoor chairs and tables with a view to supporting our outdoor dining and recovery through the pandemic."



HillingdonFirst discounts

Hundreds of businesses are also part of our HillingdonFirst card scheme and offer discounts and promotions on various products and services, including food and drinks, clothing, travel, leisure and hair and beauty. Simply show your HillingdonFirst card at the point of paying. Visit www.hillingdon.gov.uk/hillingdonfirst to find out more and order your card today.

Cllr Martin Goddard, Cabinet Member for Finance, said:

"We have organised events across the borough to showcase all that our high streets have to offer. They have been designed to support local businesses and bring the community together.

"Our high streets and local businesses' livelihoods depend on you this festive season, so please give them your support."

Use our directory to explore what shops and businesses are open in your area or sign up to promote your business. For more information, visit www.hillingdon.gov.uk/businessdirectory



AL FRESCO DINING Along Field End Road, Eastcote

Let's continue to

+ KEEP HILLINGDON SAFE +

COVID-19 will be a feature of our lives for the foreseeable future, so we need to learn to live with it and manage the risk to ourselves and others.

The NHS has started rolling out its COVID-19 booster programme giving those most at risk from the virus extra protection during the winter.

In addition, the government has unveiled its autumn and winter plan to help combat any rise in infections over the colder spell.



If you have any COVID-19 symptoms:

- a continuous cough
- high temperature
- or loss or change to your sense of smell or taste

you should self-isolate and book a test by visiting www.gov.uk/get-coronavirus-test or calling 119. If you test positive you should self-isolate for 10 days.

"I've had mine"

Booster vaccine doses are available on the NHS for people most at risk from COVID-19 who have already had two doses of a vaccine.

People aged 18 and over (or turning 18 within three months) can get a first and second dose of a COVID-19 vaccine. Most children and young people aged 12 to 17 are currently only being offered a first dose.

For children aged 12 to 15, parents and guardians will get a letter with information about when the vaccine will be offered. Most children will be given their vaccine at school or they can book an appointment online.

Children aged 12 to 15 who have a higher risk of getting seriously ill from COVID-19 or who live with someone at high risk of catching it will be offered two doses. Please talk to your GP to find out more.

Remember, if you are aged over 18 and have had your first dose, please also take the second to ensure you have stronger and longer lasting protection. It is important that everyone gets two doses. For more information about the vaccine, visit www.nhs.uk/coronavirus and www.hillingdon.gov.uk/vaccine.

It recommends that we:

- Let fresh air in when meeting indoors. Meeting outdoors is safer
- Wear a face covering in crowded and enclosed spaces
- Get tested and self-isolate if required
- Wash our hands regularly and cover coughs and sneezes
- Use the NHS COVID-19 app to help stop the spread of the virus. Visit covid19.nhs.uk to find out more
- Get vaccinated when offered.

Individuals who have been fully vaccinated and those aged under 18 no longer need to self-isolate if they are identified by NHS Test and Trace as a close contact of someone with COVID-19.

They are advised to take a PCR test as soon as possible to check if they have the virus and for variants of concern. You can order a PCR home test online or by calling 119 or going to a test site. For more information, visit www.gov.uk/coronavirus.

Get tested regularly

Even if you're vaccinated, there's still a chance you can pass COVID-19 on, so you should keep getting tested regularly. Also, many people who get infected with COVID-19 have no symptoms.

Getting into the habit of twice weekly testing (every three to four days) will help us to keep each other safe.

You can get regular rapid lateral flow tests if you do not have symptoms of COVID-19. Find out more by visiting www.hillingdon.gov.uk/community-testing.

Boost your immunity this winter

Looking after your health during winter is really important and the NHS is reminding residents of the importance of having the flu vaccination and COVID-19 booster.

Which vaccinations should I have this winter?

Everyone over 50, or those with a health condition that puts them at higher risk from COVID-19 is now eligible for the COVID-19 booster vaccine and a flu vaccine. If you are in these groups, having both jabs is the best way to protect yourself this winter.

I've had two doses of COVID-19 vaccine, why do I need a booster?

The COVID-19 booster will help improve your longer-term protection against getting seriously ill from the virus.

Will the flu jab give me flu?

No, the flu jab cannot give you the flu.

Can I have both vaccines at the same time?

Yes. If you are offered both vaccines, it's safe to have them at the same time.

Is it still safe to get the flu jab if I've had COVID-19?

If you've had COVID-19, it's safe to have the flu vaccine. It will still be effective at helping to prevent flu.

I'm pregnant, will the flu jab or booster vaccine harm me or my baby?

No, it won't. Having both the flu and COVID-19 vaccine will help protect you and your baby. It's safe to have the vaccines at any stage of pregnancy.

How do I get my vaccinations?

If your second dose of the COVID-19 vaccine was more than six months ago you can go to the NHS booking website nhs.uk/covidvaccine and book your booster.

Find out more about winter vaccinations and services at www.nwlondonics.nhs.uk/winter.

Hillingdon blooms again

Residents once again displayed their green-fingered talents and had their expertise recognised at the council's annual Autumn Show and Hillingdon in Bloom competitions. The borough has also been highly commended for its high standard of parks and green spaces.

Hillingdon in Bloom 2021 results

The council's annual free-to-enter horticultural competition returned this year in a digitally focused format.

Residents of all ages across the borough submitted more than 90 entries across Hillingdon in Bloom's nine categories.

Two categories that were particularly popular this year were 'best residential garden', which attracted the most entries with 21 submissions, and 'best first-time entry', which was the second most popular with 16 entries.

The judges were Cllr Eddie Lavery, Cabinet Member for Environment, Housing and Regeneration; Paul Richards, the council's Head of Green Spaces, Sports and Culture, and Stuart Hunt, the council's Green Spaces Service Manager.

The first, second and third place winners were announced online and received certificates, rosettes and garden centre vouchers.



Each year through this competition the council aims to encourage residents to maintain their fitness by keeping active outdoors while learning new gardening skills. In turn, Hillingdon in Bloom also helps to keep the borough looking green and colourful.

Winning first-time entrant **Krishna from Hillingdon**, said: "Last year I was disappointed to miss entering the competition but after a lot of encouragement from friends, family and even the postman, I decided to take part. Because of the pandemic, we worked hard to create our outdoor space so that we could spend time

outside and also safely entertain friends and family. It became our second home. It is so nice to be recognised in the community as I never expected to win. It is such an honour. I will definitely be entering next year!"

- **Best first-time entrant** Krishna Kanwar
- **Best rainbow display** Maria Jose Medonca Bello
- **Best hanging basket** Sally Leeves
- **Best display on an open fronted balcony** Sandra Karunasinghe Herath
- **Best window box** David Mariott
- **Best residential garden** Janet Stephenson
- **Roome Cup** Hayes End Library
- **Park and Bloom** Janet Stephenson
- **Best display** Lyn Sutherland

For a full list of winners visit www.hillingdon.gov.uk/bloom

Award-winning produce on display

Hillingdon residents of all ages have been busy this year growing a variety of homegrown produce for this year's Autumn Show competition.

The annual show, which took place at The Great Barn, Ruislip, on Saturday 4 October, and is now in its eighth year, received applications for 525 exhibits across 55 categories.

The most popular categories in the free contest included peppers, cucumbers grown outdoors, one vase one bloom, and giant decorative dahlias.

The show was judged by Gerry Edwards, FRICS CHort MCIHort, Chairman of the Royal Horticultural Society's Fruit Group and Vice Chairman of the Royal Horticultural Society's Fruit, Vegetable and Herb Committee; Cllr Lavery; Stuart Hunt;



BEST IN SHOW
George Percy along with Cllr Lavery and Cllr Haggar

the Deputy Mayor of Hillingdon, Cllr Becky Haggar, and the Deputy Mayor's Consort Marios Kaikitis.

George Percy from Hillingdon, came first in four categories, 'heaviest

marrow', 'potatoes', 'tomatoes – large' and for his cabbages in the 'any other vegetable category'. His cabbages also received the 'best in show' accolade.

He explained that while it was wonderful to win, he found tending to his allotment daily the truly rewarding part.

He said: "I'm at my allotment seven days a week and love it for the exercise and great company I have when I visit. There really is comradeship with us all there together growing our veg and winning was a lovely added bonus."

The winners were awarded rosettes, garden centre vouchers and certificates.

For a full list of winners visit www.hillingdon.gov.uk/autumnshow

More Green Flags raised across the borough

For the ninth year running, Hillingdon has retained its title as the UK's greenest borough, after the authority was once again awarded the most Green Flags nationally.

On 14 October, the borough's total number of flags increased by 3 from 60 to 63 (62 of which are maintained by the council). The new sites added this year are Sipson Meadow (Heathrow Villages ward), Deane Park (South

Ruislip ward) and Colham Green Recreation Ground (Brunel ward).

The Green Flag Award scheme, which is run by Keep Britain Tidy, is considered to be the benchmark national standard for publicly accessible parks. Each year, they acknowledge well-managed parks and green spaces which meet stringent criteria including being clean, community-orientated and environmentally friendly.



Cllr Lavery said: "Our success at both the London in Bloom awards and with the Green Flags scheme proudly reaffirms our status as one of the greenest London boroughs.

"This is a collaborative effort between a variety of council services and resident groups from across the borough who have worked with us to ensure Hillingdon's green spaces are well-maintained and looking their best.

"I'd also like to take this opportunity to thank everyone that entered Hillingdon in Bloom and the Autumn Show, there were a range of fantastic displays and produce to judge."



Hillingdon excels once again at London in Bloom awards

The borough re-affirmed its status as the capital's greenest borough after scooping a haul of top honours at this year's London in Bloom awards.

Hillingdon fended off strong competition from other London boroughs to once again win Gold and overall winner in the 'Large City' category, having previously won the title in 2017 and 2018. Judges commented on Hillingdon's 'extremely high' standard of horticulture.

A flurry of five further Gold awards added up to a total of nine accolades from the annual awards campaign, which was introduced to create lasting environmental improvement and a more attractive city by using flowers and shrubs and landscaping for long-term habitat enhancement.

Among the other category winners were the Friends of Eastcote Gardens in the 'Walled Garden' category, Harmondsworth Village for the 'Best London Village' and Eastcote Village for the best 'Large London Village'.

Gold awards

- Hillingdon was judged overall winner in the 'Large City' category
- Harmondsworth Village won the 'London Village' category
- Eastcote won the 'large London village' category



WALLED GARDEN
Eastcote House Gardens

- The Friends of Eastcote House Gardens were crowned winners in the 'Our Community' category
- Eastcote House Gardens scooped top place in the 'Park of the Year'
- The Friends of Eastcote House Gardens won overall in the 'Walled Garden' category

Silver Gilt awards

- Long Meadow in Eastcote won in the 'Large Conservation' category



Other awards

The Friends of Eastcote House Gardens were marked as outstanding in the 'It's your Neighbourhood' category. Lesley Crowcroft, Chair of the Friends of Eastcote House Gardens was given the 'Outstanding Achievement' award.

Lesley said: "The achievement award was a complete surprise, no one ever knows if they are entered for a discretionary award. I am truly honoured to receive this award, however, I have a great volunteer group backing me. Without them, nothing would be achieved."



STOP - IT'S A SCHOOL STREET
Pupils from Highfield Primary School and Cllr Riley unveil their new road safety banners

Shining a spotlight on road safety and sustainable travel

To mark Road Safety Week (Monday 15 to Sunday 21 November), we take a look at the work taking place across Hillingdon to educate young people on road safety, encourage sustainable travel to school and raise awareness amongst motorists.

Walking, cycling and scootering to school are great ways to build exercise into our daily lives and bring about a range of health and environmental benefits.

The council's School Travel and Road Safety (STARS) team has fostered close links with schools across the borough and works hard to promote road safety, encourage active travel and raise awareness about air quality.

A key part of the team's work is helping schools to develop travel plans which outline how they intend

to increase levels of walking, cycling and use of public transport for journeys to and from school. In 2021, despite the challenges brought about due to the pandemic, a total of 24 schools were accredited (16 Gold, four Silver and four Bronze).

Engaging families is another important strand of the team's work, and they help to promote national road safety initiatives with schools such as Bike to School Week which took place from Monday 27 September to Friday 1 October. Hundreds of families took part and used their own steam to get to and from school.

Matty and Danny Rutland, aged 10, (pictured left) joined in and travelled by bike from their home in Ruislip to Sacred Heart Catholic Primary School. Matty said: "It was great fun and I enjoyed going past all the cars stuck in traffic." Danny added: "We really enjoyed it and I've asked mummy if we can cycle to school whenever it's not raining."

Competitions are also held throughout the year so that children can get creative while talking and thinking about the issues involved. During February half-term, a competition was held for children in Nursery, Reception and years 1 and 2 asking for

their help illustrating the council's new road safety book, *Captain Safety* (see below) which has been distributed to schools across the borough.



As well as competitions, other events are held to bring important messages to life including live performances of *Abbie Ayre and the Shed of Science* show which teaches children, aged between six and 12, about how sustainable travel benefits both our health and the environment.

The team also offers comprehensive pedestrian and cycle training programmes to schools across Hillingdon. The pedestrian programme teaches road safety to schoolchildren from nursery to Year 6. Cycling training is delivered by approved instructors through the Bikeability programme to children in Year 6 and above. To find out more, visit www.hillingdon.gov.uk/cycling.



Walking maps for schools

The council appointed PWLC, a consultancy which specialises in delivering sustainable travel and road safety programmes, to produce Walking Zone Maps for all primary and secondary schools in the borough.

The maps are designed to encourage more sustainable travel, help create less congestion around schools, improve air quality near to the school gates, as well as helping residents to get to know their local area better by leaving their cars at home.

The maps are made from durable polyboard and are displayed prominently at the front of each school. They show five and 10-minute walking zones around each primary school and for secondary schools illustrate 10 and 15-minute walking zones.

To date, maps have been rolled out to 63 schools across Hillingdon and the next 43 schools are set to have them installed by February 2022.



Hillingdon introduces School Streets scheme

School Streets is a national scheme to transform roads outside schools, so that pedestrians and cyclists are prioritised at school start and finish times.

Highfield Primary School in Uxbridge approached the council in 2019 to help identify a solution to prevent cars from parking in a small dead-end section of their road. The cars remained parked up for most of the school day and there were safety concerns as cars were frequently doing U-turns in the road.

In January 2020, the council introduced a permanent school street restriction on Charville Lane (from the junction with The Dingle to the dead-end) to make it safer and easier for children to walk and cycle to school.

Known as a School Street, the



SLOW DOWN
Meredith Bance-Percy, 11, Arjun Patel, 7, and Olivia Kalocay, 10, from Whiteheath Junior School with Cllr Riley and staff from the council's highways contractor O'Hara Bros

road will be a pedestrian and cycle only zone during term-time between 8.15am and 9.15am and between 2.30pm and 4pm.

To help promote the scheme, pupils in year groups from across the school got involved in designing colourful banners to help raise awareness amongst motorists.

Lisa Corrigan, Headteacher of Highfield Primary School, said:

"As a school we have really noticed the difference that the School Streets initiative has made to the safety of the road outside our school.

"The key factor in making this work has been the support of our parents and the children have also embraced this initiative with many more of them cycling or walking to and from school.

"The addition of the new banners will act as a timely reminder and also encourage our new families to take part in the scheme."

The council is currently exploring the possibility of expanding the initiative to other schools in the borough. To find out more and if you'd like to put forward a street near your child's school, visit www.hillingdon.gov.uk/school-streets.

Introducing speed restrictions

Another road safety initiative has been introduced in response to road safety concerns about speeding motorists along Ladygate Lane near to Whiteheath Infant and Junior Schools in Ruislip. Teachers, parents and residents contacted the

council to highlight their concerns and following consultation, the council introduced a 20mph zone on Ladygate Lane between Westwood Close and Whiteheath Avenue.

The council is closely monitoring the success of the scheme and will explore further developments if they are viable and supported.

Cllr John Riley, Cabinet Member for Public Safety and Transport, said:

"We work hard to raise awareness of the importance of road safety and to ensure that our young people have the tools they need to stay safe either on foot or by bike.

"Our outreach work with schools is designed to get schoolchildren and their families engaged, talking and thinking about sustainable travel, road safety and the issues involved.

"Road safety, especially around our schools, is one of my key priorities and we're closely monitoring the initiatives we've introduced in Ruislip and Uxbridge to see whether it would be beneficial to roll them out to other locations."

If you have any road safety concerns, please complete the council's road safety suggestion form or submit a petition which can be found at www.hillingdon.gov.uk/road-safety and www.hillingdon.gov.uk/petitions



Protecting Hillingdon against damage from flooding

Flash flooding is becoming much more commonplace as a result of climate change. *Hillingdon People* looks at the main risks faced by the borough and examines the flood and water management projects which have recently been introduced by the council to protect homes and livelihoods.

There are three main flood risks facing Hillingdon. These include:

River flooding

There are a variety of names for rivers, including ditches, watercourses and brooks. All rivers are the responsibility of landowners. Main rivers are identified and registered by the Environment Agency. They take the lead in helping landowners manage flooding from main rivers, provide warnings and have powers to undertake work in high-risk areas to maintain rivers. The Canal and River Trust is responsible for the Grand Union Canal.

Surface water flooding

This occurs when heavy rainfall exceeds the capacity of the ground and local drainage networks to absorb it. It can lead to water flowing over the ground and pooling in low-lying areas. It is typically caused by short intense rainfall. This is identified as the biggest flood risk to residents in Hillingdon.

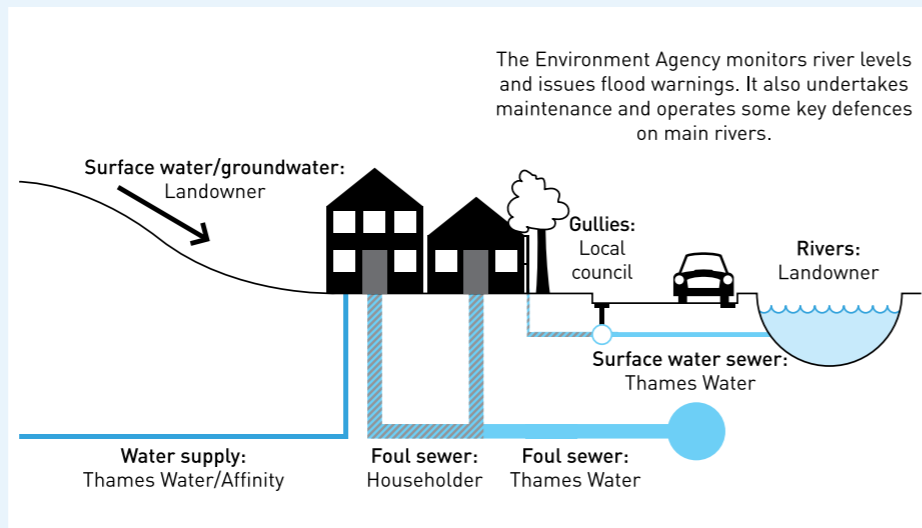
Road and sewer flooding

Most roads include designed drainage systems (gullies) intended to remove water efficiently from the surface of the highway to provide a safe passage for all vehicles and pedestrians.

Cllr Eddie Lavery, Cabinet Member for Environment, Housing and Regeneration, said: "There are a variety of flooding risks that our borough faces and it's important that the council, as a lead local flood authority ensures that residents understand their flood risk and know who to contact in an emergency.

"The council works hard to maintain the land and roads it has responsibility for and listens to residents' concerns to inform flood risk planning across all council services.

"We're taking steps to future-proof the borough against flooding and many of the initiatives that we have introduced also have a host of other benefits including increasing biodiversity by creating new habitats."



If unmaintained, these channels become blocked with soil, dead leaves and rubbish, preventing the free flow of water to the main surface water sewer.

The council has more than 32,000 gullies across the borough and maintains and cleans these as part of a rolling programme to prevent them from becoming blocked.

Gullies are normally cleaned by lifting the metal grating or cover and sucking all the dirt out using a gully sucker machine. Sometimes jetting is required to move some obstructions.

When there is very heavy rainfall on the highway in a short period of time, it's normal to see some water on road surfaces which will then

slowly drain into the nearest gully (it doesn't mean it's blocked). Thames Water is responsible for maintaining the sewers which gullies drain into.

We all have a part to play in managing flood risk and the graphic above outlines some of the different roles and responsibilities.



Minimising the borough's flood risk

The council works with partners such as Thames Water, the Environment Agency, DEFRA and the Greater London Authority (GLA) to help future-proof the borough against flooding.

In March 2020, the council secured £100,000 from DEFRA to extend the successful Eastcote Rain Gardens project (pictured below) to the south of Eastcote Station.



At a cost of £400,000, the rain gardens were installed in the summer of 2019 along Field End Road using carefully chosen plants and shrubs which help the natural flow of rainwater and prevent localised flooding.

In 2016, surface water would often flood the carriageway and flow into local shops. Thanks to the installation of 15 rain gardens, it now means that rainfall has more space for water on the carriageway away from businesses.

The council is currently consulting on moving the parking from along the central footpaths to enable the extension of these rain gardens to take place and hopes to start construction work next spring.

Residents are also using their local knowledge to help advise on flood

risk. The council works closely with the Ruislip Woods Management Advisory Group which has set up a steering group to install natural flood management in Park Wood.

Leaky dams have been introduced in the woods since 2016 to mimic the natural obstruction caused by trees and branches falling into the river.

They range from a single large branch to several tree trunks tied together. During high water flows, they will only let a certain amount of water through by slowly draining the trapped water to reduce the flood peak.

The council also works closely with residents and the Environment Agency to explore ways of reducing the flood risk along the River Pinn. Bays have been installed along the riverbank to provide more space for water to reduce the height of the river during heavy rainfall.

To help guide our work, and ensure that we are deploying the most effective strategies to minimise flood risk, the council is currently updating its Local Flood Risk Management Strategy which was first published in 2016. We will be consulting on the strategy next summer.



Hillingdon House Farm project

Hillingdon House Farm is a relatively large expanse of open land (approximately 50 hectares) and is located within the floodplain of the River Pinn in Uxbridge.

In September, the council worked closely with The Conservation Trust (TCV) to create new wetland habitats, improve the northern end of the park, as well as reduce the flood risk to nearby residents' homes.

Works to install new ditches and ponds in the grounds of Hillingdon House Farm were completed in September 2021. They were introduced to help slow down the flow of water to the River Pinn and are designed to help reduce

the flood risk to properties which back on to the open space.

During September and October, a team of 39 volunteers from TVC helped transform the area into a haven for wildlife by planting the banks of the newly dug channels with wild cornflowers. They also planted more than 1,000 wetland plants which will provide an important new habitat for amphibians (including Great Crested Newts), water invertebrates and other species.

The works were part-funded by the GLA (£40,000) and the council (£30,000) using local land and property contributions (£106 agreements).

Understand your flood risk

The Environment Agency has produced maps to show if you are in an area likely to be affected by flooding from rivers, surface water as well as reservoirs, and how deep that flood may be. To view these visit www.hillingdon.gov.uk/flooding. For more information, visit www.gov.uk/check-flood-risk and to sign up for flood warnings, visit www.gov.uk/sign-up-for-flood-warnings.

If you are at risk, check the National Flood Forum or speak to a Floodline adviser on 0345 988 1188 to find out how to stay safe during a flood. For more information, visit nationalfloodforum.org.uk.

Take practical steps to reduce your risk

Preventing floods completely is very difficult, but there are ways that you can reduce the impact to your home or business and the impact on others.

Manage your property drainage

Drains and pipes on your property are your responsibility if you are the landowner. A drain is the property owner's responsibility until it connects to either someone else's drain or a public sewer. If you are buying a house the council recommends asking the seller where the drainage is on the property, or undertaking your own survey to ensure it is in good condition. You should ensure that all hard surfaces are made permeable or drain into a permeable area to reduce the pressure on the road drainage.

Know the drainage system within your property boundary and check that it is clear of blockages. The National Flood Forum (Blue Pages) is an independent directory of flood products and those offering services to provide advice on how to reduce flooding to your home or business. For more information, visit bluepages.org.uk.

Make sure any planning applications contain the right flood risk assessment

Ensure that any development has an appropriate flood risk assessment (where needed) submitted with planning applications.

If you would like to find out more information about the projects we have completed, general flooding information and how to report issues, visit www.hillingdon.gov.uk/flooding

Unlock your potential with Hillingdon's adult learning

The new academic term has just launched and there's never been a better time to boost your skillset with one of the council's adult learning courses.

The 2021/22 programme contains more than 70 nationally recognised qualifications and features a variety of subjects, including:

- floristry and horticulture
- English
- maths
- accounting
- childcare
- health and social care

- yoga
- sewing
- painting
- foreign languages
- digital skills.

Catering for all ages and abilities, there's something for everyone, with levels ranging from beginner to intermediate, and sessions that are more advanced.



Meet Anna

Anna had always known that she had a talent for arranging flowers. She wanted to become a florist and add more beauty to people's lives but didn't have the courage to follow her dreams. Through our adult learning programme, Anna has quickly progressed through several floristry courses and her new-found confidence has given her the courage to set up her own business.

Anna said: "So far it's just a small workshop in my garage but I'm sure it will grow. I know now that I am able to meet my customers' needs and I'm sure that I can always count on my tutors who are very helpful. "If you want to add a sparkle to your life, don't hesitate and enrol yourself in one of the floristry courses - it might be the beginning of your life's adventure."

Meet Aliya

Aliya was 33 years old when her husband passed away after a long illness with brain cancer. She was alone in the UK with two young children, without any friends, family or the qualifications needed to work in the country. She came to along to one of our open days and decided to study Support Work in Schools Level 2. A few weeks into the course, Aliya was diagnosed with breast cancer. She successfully fought against cancer,

excelled at her studies with us and is currently undertaking further training after securing a job in a school. Aliya said: "My learning journey with Hillingdon has helped me to become an independent and confident person. I have my own identity and people see me as an individual, not as a helpless widow in need of support. It feels amazing to see how proud my parents are of my achievements and the positive impact my studies have had on my children."



If you've been inspired by Aliya and Anna and want to start your own learning journey, visit www.hillingdon.gov.uk/adult-courses or call 01895 556455 today



Stay well and warm this winter

As the nights draw in and temperatures drop, a range of indoor and outdoor council activities are available to help older residents stay active and healthy. Support is also available for local people living with dementia, as well as a heater loan scheme and hot meals delivery service.

Improve and maintain your fitness

The council provides a range of fitness facilities and sessions (some of which are free) to suit all abilities and interests. Eight of our libraries run weekly low-impact chair-based exercise classes which work on improving your strength, flexibility, coordination and stamina. The sessions are free for over-65s and booking in advance is required. There's also a free online version of the class, so you can keep fit from the comfort of your home. For more information, visit www.hillingdon.gov.uk/chairobics.

There are 37 outdoor gyms at open spaces across the borough which you can use for free and are suitable for all fitness levels. To find your nearest gym, visit www.hillingdon.gov.uk/outdoor-gyms. Discounted rates for over-65s are available at Haste Hill Golf Course in Northwood Hills between 7.30am and 10am, Monday to Friday, excluding Bank Holidays. Proof of age is required when booking. Find out more and book a session at www.hillingdon.gov.uk/golf. Free weekly swimming lessons, which cater for varying abilities,



for those aged 65 and over are offered at three of the council's leisure centres. Over-65s can also book free swimming sessions. To find a centre near you and book, visit www.better.org.uk or download the Better UK phone app. Our Walk Hillingdon programme runs free guided walks through many of the borough's award-winning parks and offer a great way to meet new people while keeping active. Find out more at discover.hillingdon.gov.uk/led-walks. Alternatively, some downloadable self-guided walking tours and easy-to-follow directions are available at www.hillingdon.gov.uk/walking.

Support for residents living with dementia

Groups for residents and carers living with dementia also take place at many of our libraries. The free sessions provide an opportunity to meet others also living with the condition, and a range of activities including reminiscence sessions, chair exercise classes, bingo, art, music and more. Additionally, a variety of weekly free sporting activities are available which include golf and walking football. For more information and to book, visit www.hillingdon.gov.uk/dementia-activities or email scurner@hillingdon.gov.uk or call 01895 277137.



Hot meals delivered to your door

There's a hot meal delivery service within Hillingdon provided by Apetito, which includes a preventative welfare check to support residents to live independently, healthily and within their own homes for as long as possible. The standard lunchtime meal is £5.25 and the three-course lunchtime meal is £6.25. For more information and to apply, visit www.hillingdon.gov.uk/meals-service or call 01895 250767. Dining clubs are also a great way to meet others in your local area. For further details, visit careandsupport.hillingdon.gov.uk.



If your heating breaks down this winter

If your heating breaks down this winter, the council provides a heater loan scheme for homeowners aged 65 and over. Electric heaters are available for a short-term loan of up to two weeks while you wait for repairs to be carried out. There's also a one-off grant available to cover heater electricity costs. For more information, or to request a heater, call 01895 556633 (Monday to Friday, between 8am and 6pm) or 01895 250111 (evenings and weekends).



Recognising the achievements of Hillingdon's children in care

We celebrate the accomplishments of our young people in care and also care leavers annually through our Kids in Care Awards (KICA). *Hillingdon People* meets some of this year's winners.

More than 400 young people - who were nominated for awards by their social worker - and their guests enjoyed this year's new-look KICA. Celebrations are usually marked with a formal awards ceremony, but this year, two bespoke activity-based events took place during August and October, to mark the occasion and provide attendees with the opportunity to reunite and enjoy a range of fun activities.

Our young people decided that an alternative to a formal awards night was needed so that they could have some memorable experiences following many months living in lockdown.

There are usually nine award categories including 'Exceptional Achievement in Education', 'Personal Development' and 'Positive Contribution'; but this year open categories meant even more young people could be nominated for a wider variety of achievements.

A summer fête at Hillingdon Athletics Stadium was hosted for our children aged 14 and under on Sunday 22 August. It featured a variety of attractions, including face painting, a caricaturist, zorbing, arts and crafts, soft play, inflatable bungee run and assault course. Young people who have left care also volunteered their time to help with the successful running of the event. The Mayor of Hillingdon, Cllr Roy Chamdal, and Cllr Jane Palmer, Cabinet Member for Health and Social Care, also came along to meet guests and celebrate the occasion.

Fiona, one of the borough's foster carers, said: "It was a really great event and so much more interactive and inclusive than the traditional hotel awards.

"Our foster child had a great time and really enjoyed being able to visit each of the activities. She especially liked the zorb balls and bouncy castle and, of course, the ice-cream. She is already asking if she can go again next week!

"The day was really well-organised and we thought the artist and face painter were fantastic too - they worked hard and were never without a queue. The fête created some really great memories and I hope this event grows from year to year."

An afternoon of celebrations for looked after children and care leavers aged 15 and over also took place at Hillingdon Athletics Stadium on Sunday 3 October, where guests enjoyed a live DJ, a taxi photobooth, a circus skills workshop, cuisine from a range of food vans, a nerf gun target range and inflatable games. Cllr Roy Chamdal; Cllr Jane Palmer; and Cllr Susan O'Brien, Cabinet Member for Families, Education and Wellbeing; Cllr Heena Makwana and Cllr Nick Denys, Chair of the Corporate Parenting Panel also joined in the fun.

In addition, two barbecues were held at the Abacus Centre in West Drayton for young people aged 16 and over on Friday 23 July and Wednesday 27 August, which enabled young people in care and care leavers to come together, enjoy themselves and create memories, following many months of not being able to meet face to face.

The council is corporate parent to nearly 400 children and young people under the age of 18 and supports more than 500 young people who have left care.



Supporting care leavers in further education

The council continues to support young people once they leave care up to the age of 25. Part of this commitment is supporting their ambitions and aspirations related to education and training.

Cllr Palmer said: "I'm extremely proud of these inspirational and accomplished young people who have overcome very difficult situations. It was an honour to celebrate with them.

"It's extremely important that all our children in care are supported so they can reach their full potential, and I am so pleased that these KICA events were able to recognise so many of them this year."



Majid came to the UK from Iran in 2017 when he was 16. He didn't know anyone here and the council supported him. Since his arrival in the UK, Majid has pursued professional football, qualified as a personal trainer and recently started university.

He said: "I am passionate about playing football and I had a trial with Chelsea Football Club in 2019. I didn't make it into the squad but it

was a great experience for me. My social worker was always trying to support me in understanding that I needed a second plan if football didn't work out. My social worker and personal advisors have advised me about my studies and future.

"Two years ago, I qualified as a personal trainer and this is a job I do part-time and really enjoy. I started university in September and I am studying Human Nutrition at Middlesex University. I chose that course as it is linked to my job as a personal trainer. Before that I studied

Sports Science for three years at college. I now rent a private house with a friend and one day hope to study for a masters and eventually open my own gym business or franchise.

"Having the right people around me has helped so much, and even if they don't have the right information about the subject at the time, they go away and research it and also link me to others who can help. I want to thank the council for all the support I have received since 2017, especially my social worker and my virtual school officer."



John was 15 when he came from west Africa to the UK in 2018. He started life in the country living in a children's care home in Hayes. Through support from the council, John has also gone on to university, got involved in charity work and joined a committee which helps to shape policies for care leavers in Hillingdon. One day John hopes to become a university lecturer.

He said: "The council really stepped up to make sure that I had whatever was necessary to push my

academic life and upbringing to the best of my abilities. They did this by encouraging me and I was able to engage with a charitable organisation called Jamie's Farm. At Jamie's Farm, I was given the opportunity to learn a lot about agricultural practice in the UK. I learnt a lot, made new friends and best of all, I became an ambassador for the charity (2018 to 2019). In 2019, I finished Year 11 and went on to do my A-levels.

"As a young care leaver, going to university was a challenging and rigorous journey to start with. But thanks to the council, I got the opportunity to attend a programme

at Brunel University which came to my aid when I thought all hope was lost as I could not secure student finance.

"Through the help of my social service representatives, I was made aware that Brunel University had scholarship schemes that might be of use to me. I took the advice and applied. I am happy to say that I am now in my first year of a Business and Management degree at Brunel University.

"I am also a member of the young people's Stepping Out team - a committee of young adults who discuss future policies that will help to set care leavers on the right path."



CELEBRATING
Cllr Palmer with Alex Coman and Helen Smith from the Safeguarding, Partnership and Quality Assurance team



JETS

JOB ENTRY: **BACK INTO WORK**
TARGETED SUPPORT

Has COVID-19 left you struggling to find work?

Are you sending applications and not hearing back?

Are you selling yourself short in job interviews?



We want to support you during these hard times and you may be able to receive free specialised support from Shaw Trust.



Find out how we can help you by scanning the QR link above or going to: <https://tinyurl.com/HillingdonSupport>
Alternatively, to speak to your local Hillingdon representative you can contact Freya
Freya.Valentine@Shaw-Trust.org.uk
07563 025 502

- Features and benefits of the JETS Programme**
- ✓ Personal advisor
 - ✓ Direct access to live vacancies
 - ✓ CV building and Interview skill building
 - ✓ Learn new skills and change sector
 - ✓ Confidence building and job search guidance



Funding community facilities

The borough's Chrysalis programme, which enhances council-owned community facilities, funded a range of improvements at sites across the borough during the summer and early autumn.

Improved changing facilities

Eastcote Bowling Club received £20,000 in order for their changing room to be re-clad. Works at the club started in August and were completed in September.

Michael Milward from Eastcote, and the club's treasurer, applied for the refurbishment. He said: "Eastcote Bowling Club has been in existence since 1934 and is part of the fabric of the local community.

"The changing rooms are an integral part of the club, and the building was in urgent need of re-cladding. The roof of the building was kindly replaced to a high standard in 2019 by the council, but in order to maintain the fabric of the underlying building, the external walls needed urgent attention. The improvements have given the venue a new lease of life and we are grateful for the council's support."



EASTCOTE BOWLING CLUB
Colin Williams, Fixtures Secretary; Mark Hallam, President; Mike Milward, Treasurer

New composting toilets

Two allotments – Moor Lane Allotments in Harmondsworth and Grosvenor Avenue Allotments in Hayes – were awarded £38,000 for the installation of composting toilets. The environmentally-friendly facilities do not require access to mains water or electricity and are perfect for outdoor locations.

On Monday 20 September, Cllr Eddie Lavery, Cabinet Member for Environment, Housing and

Regeneration officially opened both toilets. He was accompanied by the Mayor of Hillingdon, Cllr Roy Chamdal at the Hayes site.

Hardip Lawana from Harmondsworth, and Site Secretary and Chair of Moor Lane Allotments and Horticultural Society, requested the toilet as it was felt that it would benefit many of their plot holders.

He said: "Since the recent installation of nine raised planting beds, we have a high percentage of over-65s who are now active members.

"People who use the site, in particular the elderly, often need to use the toilet, and the lack of a toilet had meant that they were often left without access to such a facility."



NEW TOILETS
Cllr Lavery officially opening the new toilets with Hardip (far left) and members of Moor Lane Allotments

Improving our green spaces

In addition, approximately £204,000 has been spent on path improvements in our green spaces, following several applications from residents.

Works took place during the summer and were completed in September. They included a total reconstruction of the old concrete path from Hoylake Crescent to The Greenway in Ickenham; and for a new pathway along part of the Celandine Route between Cophthall Road East and Swakeleys Road, also in Ickenham.

Christian Barber from Ickenham, requested the improvements from Hoylake. He said: "I believe the pathway would really benefit many residents, especially those with disabilities and using pushchairs. It would also improve access to West Ruislip Station."

David Murrison also from Ickenham, made his submission as he hoped that by paving more of the route it would encourage more people to use it. He explained: "Laying the gravel path has opened the route up as now you can run, walk or cycle off-road all the way from Ickenham to Uxbridge."

Pathways were also constructed along other parts of the Celandine Route, which stretches along the River Pinn in Pinner down to the Grand Union Canal in Cowley. They included between Cheney Street, Eastcote, and the Harrow border, between Forge Green and Fore Street in Eastcote, and in Pinn Meadows between Elmbridge Drive and St Martin's Approach in Ruislip.

A gravel path was created between Sweetcroft Lane in Uxbridge and Hillingdon House Farm.

Each year, funding is available via the Chrysalis programme to support improvements within our parks, green spaces, allotments and other community facilities.

So far this year under the scheme, facilities including playgrounds and outdoor gyms have benefited from upgrades and installations.

To suggest an improvement via the programme, visit www.hillingdon.gov.uk/chrysalis

A HEALTHIER HILLINGDON STARTS HERE

Whether you're taking the first steps on your fitness journey or you're looking to stay in shape, you'll find everything you need at Better leisure centres across Hillingdon.

- Hillingdon Sport & Leisure Complex
- Highgrove Pool & Fitness Centre
- Botwell Green Sports & Leisure Centre
- Queensmead Sports Centre

Join the movement at better.org.uk



BETTER

HILLINGDON LONDON

www.hillingdon.gov.uk/leisure

Better is a registered trademark and trading name of GLL (Greenwich Leisure Limited), a charitable social enterprise and registered society under the Co-operative & Community Benefit & Societies Act 2014 registration no. 27793R. Registered office: Middlegate House, The Royal Arsenal, London, SE18 6SX. Inland Revenue Charity no. X843398.

Make a difference... to a child's life



Foster

For more details
www.hillingdon.gov.uk/fostering
 0800 783 1298

HILLINGDON LONDON

www.hillingdon.gov.uk

Update from the West Area Chief Inspector

It's been a very difficult time for both policing and the communities we serve.

One person has destroyed the confidence that communities have in the police through his own individual actions. Every police officer is embarrassed, ashamed, broken and angry because they work tirelessly day in, day out to protect those that need us. My ask of you is to allow us time to rebuild that confidence and know that we are 100 per cent committed to doing so. Like many others, I stand shoulder to shoulder as an equal with all women to eradicate violence and build that confidence. Her name is Sarah Everard and she will not be forgotten.

Violence against women and girls (VAWG) remains one of our key priorities and in due course more will be published on the work we will undertake as an organisation. You will continue to see officers out on patrol, visible to the public and we will carry out more engagement opportunities within the community now that COVID-19 restrictions have eased.

We are currently reviewing our processes around burglary investigations looking at both prevention and also primary/secondary investigations. Our schools officers are

doing a significant amount of work within schools to educate young people to help prevent offences taking place, as well as giving personal security advice.

Our neighbourhoods officers have been working hard to reduce the serious violence picture across the borough. They have had some really good results recently and charged a man with possession of more than 50 knives which he was attempting to sell in the street, and successfully charged another offender for carrying a converted firearm. There are so many stories of good work being carried out across Hillingdon and I wish I could share them all.

Lastly, I would like to welcome Police Sergeant Erica Morris who will take up the vacant post for the Northwood, Northwood Hills, West Ruislip and Harefield wards. Erica is a very experienced sergeant in neighbourhood policing, having worked on the neighbourhood wards in Hounslow. I'm sure you will all make her feel very welcome whilst she finds her feet.

Until next time, I wish you all the best and keep safe.

Shaz Shah,
 Acting Chief Inspector for
 Neighbourhoods

An update from the London Fire Brigade Borough Commander

It has once again been a busy period for the four fire stations of the borough. My firefighters have been testing and exercising our revised high-rise firefighting tactics, including participating in a large exercise at Brunel University.

I am extremely proud to say that our very first cohort of Hillingdon fire cadets passed out earlier this year. This has been an amazing effort from both the cadets and their instructors, delivering a comprehensive programme against the challenges of the pandemic. A pass out parade was held to showcase their skills and they put on an impressive display!

As we move into the autumn and winter months, and whilst fire safety is vital throughout the year, the extra risks from bonfires, fireworks and candles make it especially important to be vigilant. This is

why the firefighters of Hillingdon are asking people to take extra care over the festive season to ensure that their families and loved ones are protected from fire.

To ensure you have the best seasonal festivities, keep fire safety at the top of your list. Ensure you place candles in suitable holders and away from curtains, never leave cooking unattended, and enjoy fireworks and bonfires safely and responsibly.

We have recently launched a new Home Fire Safety Checker which allows you to carry out a thorough check of your home in only a few minutes. It's simple and practical – giving you specific advice for your family and your home. It is available on our website at www.london-fire.gov.uk/safety/the-home.

Alan Taylor



Choosing the right NHS service for you

Accessing the most appropriate NHS service will ensure you get the right care when you need it.

When you think you need A&E, think NHS 111 first

Doctors, nurses, paramedics and fully trained advisors are available to help you 24 hours a day, 365 days a year, and will ensure you receive the right care in the right place, at the right time.

If you need urgent care you can then be booked into your local A&E or urgent treatment centre, or if an alternative local service is more appropriate, NHS 111 clinicians can help you access it. You can contact NHS 111 at 111.nhs.uk or by calling 111.

If you or someone you know is experiencing a life-threatening medical emergency, you should still attend A&E or call 999.

Your GP can help you in-person, online, or over the phone

GP practices are open and here to help. If you need to speak to a GP or doctor, it is best to call your usual practice as they will have your medical records and can provide help based on this.

Most appointments in the first instance are carried out over the phone or via video. If a face-to-face appointment is needed you will still be seen in person by a GP.

If you need prescription medication, your GP practice can arrange for it to be collected at a pharmacy that is convenient for you.

Local pharmacists can help with minor health concerns

Visiting your nearest pharmacy is a quick and convenient way to get clinical advice on minor health concerns.

HILLINGDON WHAT'S ON?



LIBRARIES

Culture Bite Lunches: How to Belong with Sarah Franklin

Monday 15 November, 1pm to 1.45pm on Facebook Live
Join this special online lunchtime event with the acclaimed author of *Shelter*, Sarah Franklin, as she talks about her latest novel *How to Belong*, which explores themes of identity, coming home and the increasing role of women and modernity in rural industries.
Find out more at discover.hillingdon.gov.uk/library-events.

The Tsarina's Daughter: The Other Elizabeth

Friday 19 November, 7pm to 8pm on Facebook Live
Ellen Alpsten discusses the next title in her Romanov series *The Tsarina's Daughter: The Other Elizabeth*, about a woman who started life with unthinkable power and then suddenly found herself penniless and alone. But when everything was taken from her, no one expected her to fight to get it back...
Find out more at discover.hillingdon.gov.uk/library-events.

THEATRE

Cinderella Wednesday 1 to Sunday 5 December

The British Airways Cabin Crew Entertainment Society (BACCES) present their 50th anniversary production of *Cinderella*. This classic rags to riches tale will be told in true BACCES style, and this year's show promises to be the Fairy Godmother of all pantomimes.
Cost: Wednesday, 7.30pm, £21.50; Thursday and Friday, 8pm, £22.50; Saturday, 7.30pm, £23.50; Saturday, 2pm, £20.50; Sunday, 2pm, £20.50. Groups of 10 and more pay no booking fees.

Find out more at www.becktheatre.org.uk or call the box office on 020 8561 8371. Beck Theatre

EXHIBITIONS

Northwood Cemetery and the Polish Air Force

There are 54 Polish pilots buried in the Commonwealth War Graves Commission section of Northwood Cemetery, alongside some of their colleagues who have died more recently. This online exhibition focuses on five airmen's personal stories of heroism and sacrifice. It also launched to mark the anniversary of the death of Ludwik Paszkiewicz and Tadeusz Andrusków who were killed on the same day (27 September 1940) within minutes of one another.
Find out more at www.hillingdon.gov.uk/polish-pilots.

Remembrance exhibition Friday 5 November to Thursday 2 December

This display tells the story of the commemoration of those lost in wartime and how our current memorials and rituals of remembrance date largely from the First World War. The exhibition looks at remembrance on a national and local scale, at the



Hillingdon has a range of in-person and online activities to keep you entertained throughout November and December.

familiar symbols, and also explores some of the issues regarding remembrance. Additionally, there will be a display of poppies crafted by community groups from around the borough.

**Cost: Free
Uxbridge Library**

Polish Air Force exhibition

A special exhibition recognising the outstanding contribution the Polish Air Force made during the Second World War is on display at the Battle of Britain Bunker Exhibition and Visitor Centre. Tickets need to be pre-booked ahead of your visit. You can also take a virtual free tour of the attraction and learn more via the range of online resources which explore historical events including the Battle of Britain, Normandy landings and Dunkirk evacuations.
Cost: Admission is free for under-16s and Defence Discount Service cardholders. The cost is £5 for adults (£9 including a bunker tour) and £4 for over-65s (£7 including a bunker tour). Hillingdon First cardholders receive a 50 per cent discount. Find out more and book at battleofbritainbunker.co.uk and bunker@hillingdon.gov.uk. The Battle of Britain Bunker Exhibition and Visitor Centre

EXERCISE

Dash for Fitness running group

Mondays, 7pm to 8pm
Make your running more social and fun while you get fitter, go faster, and go further. The Ruislip-based group accommodates runners of all levels (under-18s must be accompanied) and is led by a UK Athletics approved coach in Running Fitness and CYQ Level 3 personal trainer.

Cost: Free but 5K masterclasses (£70 for a 12-week programme) are also available. For more information, call Gary on 07710 105086, email dashforfitness@btinternet.com or visit groups.runtogether.co.uk/DashForFitness.

Pilates with Suzy Barton Tuesdays, 1.30 to 2pm

Pilates exercises focus on improving posture, core strength and flexibility. The classes are suitable for everyone regardless of age, ability, or fitness level. Suzy is an ex-British gymnastics squad member, Pilates Foundation trained and a CYQ Level 3 instructor.
Cost: £12.50 per class or £10 for a block of five or more. For more information and to book, email suzybartonpilates@btinternet.com or call 07850 687488. The Stables at Manor Farm

Meditation with Quiet Space Wellbeing Thursdays (term-time only) at 10am

Take an hour to relax and rejuvenate with deep abdominal breathing and guided meditation. Classes have been running for six years and are suitable for adults, and beginners are welcome.
Cost: £10 per class. For more information, text Aly on 07753 349024, email hello@quiet-space.com or visit quiet-space.com. The Stables at Manor Farm

Exercise with Alice Mondays, Thursdays and Fridays, 10am to 11am

The award-winning dance exercise class for over-60s of all abilities is available via Zoom and at a COVID-19 secure location. The sessions, which can be enjoyed either seated or standing, provide fun and friendships while getting fit; and are led by a qualified West End dancer and UK Coaching Awards 2021 finalist. A new Friday class is also coming soon!
Cost: A monthly subscription of £35. For more information, call 07736 546190 or email exercisewithalice@yahoo.co.uk. Guide Hut, Ickenham

**Mindfulness with Alice
Wednesdays, 10am to 11am**
Learn to manage stress, depression and anxiety. Get help with sleep, relaxation, pain management and general wellbeing at this friendly group. Mindfulness based on Oxford University CBT and NLP. New weekly evening class coming soon.
Cost: A monthly subscription of £25.

For more information, call Alice on 07736 546190 or email mindfulnesswithalice@yahoo.com. Compass Theatre

Tennis court hire and coach-led sessions

A hiring fee of £5 per hour, per court has been introduced at the following locations: Cavendish Recreation Ground, Churchfield Gardens, Fassnidge Park, Hillingdon Court Park, Rosedale Park, Swakeleys Park and The Closes. Payment can be made when booking a court. Free coach-led tennis sessions for young people aged over 12 years are on offer at Cavendish Recreation Ground.
Find out more and book at www.hillingdon.gov.uk/tennis. Cavendish Recreation Ground

Walking Football Monday to Friday, various times and venues

Free inclusive walking football sessions take place weekly in Hayes and Uxbridge. These include dedicated sessions for women and girls, some for the whole family and specific sessions for men aged over 35.
Find out more at www.hillingdon.gov.uk/walking-football. Botwell Green Leisure Centre and Hillingdon Sports and Leisure Complex

LEISURE

The Hardy Plant Society Middlesex Group

Monday 6 December, 7.30pm
The gardening group is a friendly, enthusiastic group of gardeners of all abilities who meet regularly to hear speakers on a range of topics. The next talk is with gardening journalist Val Bourne and will include a Christmas social of mulled wine and mince pies (COVID-19-dependent).

The group also enjoy a varied programme of trips and visits to gardens, RHS shows and places of horticultural interest. They also run regular plant sales for members and the public.
Cost: Free for members, £4 for non-members. Find out more at www.hpsmiddlesex.org.uk. Field End Junior School

Eastcote & Ruislip Choral Society's Christmas concert

Saturday 11 December, 3.30pm
A festive-themed show followed by refreshments. The choir also meets every Tuesday (term-time only) at Ruislip Methodist Church, Ickenham Road, HA4 7BZ, between 8pm and 10pm. New members are welcome.
Cost: £15, free for under-12s. Find out more at www.eastcote-ruislip-choral.org or call 01895 904556. St. Edmund's Church

Hillingdon Language Clubs Thursdays (October to July), 7.45pm

A chance to practise your Spanish, French or Italian in a friendly social group. Native speakers also welcome.
Cost: £15 per year or £3 per visit.



Walking football



Duck Pond Market

For more information, call 01895 253472 (Spanish and French enquiries) and 01895 674292/674586 (Italian enquiries) or visit www.hillingdonlanguageclubs.wordpress.com. St. Giles Church Hall

English Language Café Wednesdays (term-time only), 10am to 11.30am

Practise spoken English and make new friends. Each week a different topic will be introduced, as well as some hints on grammar and usage. Refreshments are also available.
Find out more and book at www.ecn.org.uk/languagecafe or call 01923 845200. Emmanuel Church

Hillingdon Bridge Club Mondays (1pm to 4.30pm and 7pm to 9.30pm) and Thursdays (1pm to 4.30pm)

A small and friendly bridge club based in Hillingdon. New members are welcome.
Cost: £1.50 per session. For more information, contact Tony on 01895 233853 or Roman on 07956 481672. Community Hall, Hillingdon

Duck Pond Markets First and third Sunday of the month, 10am to 3pm

Foodies markets on the first Sunday of the month. Artisan markets on the third Sunday of the month.
Find out more at www.duckpondmarket.com. Manor Farm

Exhibitions at the Cow Byre Gallery Daily, 10am to 5pm

Located on the Manor Farm site, this popular gallery exhibits work from different local art groups nearly every week of the year. The latest displays will include work from Visual Arts Free & Easel (from Sunday 21 November), Hillingdon Artists (from Sunday 28 November), Julie Ball Art (from Sunday 5 December) and Ceramic Fusion (from Sunday 12 December).
Find out more at www.hillingdon.gov.uk/manor-farm. Manor Farm

VENUES

Barra Hall Park
Freemans Lane, Hayes, UB3 2NH

Beck Theatre
Grange Road, Hayes, UB3 2UE

Botwell Green Sport and Leisure Centre
East Avenue, Hayes, UB3 2HW

Cavendish Recreation Ground
Field End Road, Eastcote, HA4 9PG

Churchfield Gardens
Eastcote Road, Ruislip, HA4 8BE

Community Hall
304 Long Lane, Hillingdon, Uxbridge, UB10 9PE

Compass Theatre
Glebe Avenue, Ickenham, UB10 8PD

Emmanuel Church
High Street, Northwood, HA6 1AS

Fassnidge Park
Rockingham Parade, Uxbridge, UB8 2UW

Field End Junior School
Field End Road, Ruislip, HA4 9PQ

Ickenham Guiding HQ
Community Close, Ickenham, UB10 8RE

Harefield Village Green
Rickmansworth Road, Harefield, UB9 6JT

Hillingdon Court Park
Parkway, Hillingdon, Uxbridge, UB10 9JX

Hillingdon Sports and Leisure Complex
Gatting Way, Uxbridge, UB8 1ES

Manor Farm
Bury Street, Ruislip, HA4 7SU

Rosedale Park
Albion Road, Hayes, UB3 2RY

St. Edmund's Church
Pinner Road, Northwood Hills, HA6 1QS

St. Giles Church Hall
Swakeleys Road, Ickenham, UB10 8BG

Swakeleys Park
The Avenue, Ickenham, UB10 8LD

The Battle of Britain Bunker Exhibition and Visitor Centre
Wren Avenue, Uxbridge, UB10 0BE

The Closes
Church Close, West Drayton, UB7 7PY

Uxbridge Library
High Street, Uxbridge, UB8 1HD

Residents without internet access can visit their nearest library to access online listings.

If you wish to publicise an event, please email details to hillingdonpeople@hillingdon.gov.uk or send to Hillingdon People, 3S/05 Civic Centre, High Street, Uxbridge, UB8 1UW. Events are selected at the editor's discretion.

Sue's Home Improvements
Trustworthy, professional female decorator

Property maintenance, painting, decorating, bathrooms, minor plumbing and electrical work, day/evenings/weekends.

Call 07952 244664 or email suecorentin@gmail.com

Amarati Builders

- Plastering
- Outside painting
- Rendering
- Pointing
- Guttering
- Roof tiling
- Block paving
- Kitchens
- Cleaning

Call Matt on 07838 116459

Are you looking for good quality furniture or electricals?
Or do you have some you want to donate?

For a free and friendly collection call your nearest branch - open 6 days a week

We recycle quality unwanted furniture and electricals. We provide paid employment and training to disadvantaged people and excellent quality furniture at fantastic prices to you. Visit our stores today!

trinity
HOME + PEOPLE + JOB

Uxbridge: 01895 256655
Hayes: 020 8797 9505
www.wearetrinity.org.uk
facebook.com/trinityfurniturestore

THURSDAY 9 DECEMBER 2021 - SUNDAY 9 JANUARY 2022

Beauty and The Beast

COMPASS THEATRE, ICKENHAM
BOX OFFICE: 01895 250615 | www.hillingdontheatres.uk

KEY AMNESTY
of council homes

Changes not declared

Illegally sublet

Tenancy fraud is a crime, hand in your keys and avoid prosecution.

No questions asked.
You can hand your keys in at the Civic Centre's main reception between 8 November and 17 December 2021.

HILLINGDON
LONDON

www.hillingdon.gov.uk/key-amnesty

Apply ▶ Book ▶ Pay ▶ Request ▶ Report
Do it online 24/7 at www.hillingdon.gov.uk

Environment and roads

- Abandoned Vehicles ▶
- Environment and Anti-Social Behaviour ▶
- Flytipping ▶ Graffiti ▶
- Parks and Green Spaces ▶
- Pest Control ▶ Roads and Pavements ▶
- Special Collections ▶ Street Lighting and Cleansing ▶
- Waste and Recycling 01895 556000
- Licensing ▶ Animal Welfare 01895 277433
- Food Health and Safety 01895 250190

Learning

- Adult Learning www.hillingdon.gov.uk/adultlearning 01895 556455
- Library Information Desk 01895 250714
- School Admissions www.hillingdon.gov.uk/schooladmissions 01895 556644
- School Transport 01895 250008
- Truancy Hotline 01895 250858

Leisure

- Battle of Britain Bunker Exhibition and Visitor Centre battleofbritainbunker.co.uk 01895 238154
- Botwell Green Sports and Leisure Centre 020 8561 0956
- Haste Hill Public Golf Course 01895 250777
- Highgrove Pool and Fitness Centre 01895 630753
- Hillingdon Sports and Leisure Complex 0345 130 7324
- Hillingdon Theatres www.hillingdontheatres.uk 01895 250615
- Queensmead Sports Centre 020 8845 6010
- Uxbridge Public Golf Course 01895 556750
- William Byrd Pool 020 8897 9390

Local democracy

- Council Meeting Dates and Agendas 01895 250636

USEFUL SERVICES AND AGENCIES

- Addiction, Recovery, Community, Hillingdon (ARCH) 01895 207777
- Affinity Water 0345 357 2407
- Age UK Hillingdon 020 8756 3040
- Alzheimer's Society Hillingdon 01923 823999
- Asphaleia Action 01895 272478
- Carers Trust Hillingdon 01895 811206
- Centre for ADHD and Autism Support 020 8429 1552
- Citizens Advice Consumer Helpline 0808 223 1133
- Citizens Advice Hillingdon 0344 848 7903
- Communicare Counselling Service 01895 256056
- Disablement Association Hillingdon (DASH) 020 8848 8319
- HD Carers Support Group 07752 169849
- Healthwatch Hillingdon 01895 272997
- Hillingdon Autistic Care and Support (HACS) 020 8606 6780
- Hillingdon Brain Tumour and Injury Group 01895 713205

HILLINGDON CONTACTS



- Electoral Services and Registrars 01895 558250
- Conservative Group Office 01895 250316
- Labour Group Office 01895 250780
- Mayor's Office 01895 250763

Planning

- www.hillingdon.gov.uk/planning 01895 250230
- Building Control, Inspections and Dangerous Structures 01895 558170
- Dangerous Structures (out of hours) 01895 250111
- Local Land Charges 01895 556115

General

- Adoption and Fostering www.hillingdon.gov.uk/fost-adopt 0800 783 1298
- Brown Badges 01895 277277
- Council Tax and Benefits www.hillingdon.gov.uk/counciltax 0300 123 1384

- Families' Information Service www.hillingdon.gov.uk/fis 01895 556489
- Fraud Hotline www.hillingdon.gov.uk/reportfraud 0800 389 8313
- Hillingdon First Card www.hillingdon.gov.uk/hillingdonfirst 01895 556677
- Hillingdon Social Care Direct (adults and children) ▶ Blue Badges ▶ Freedom Passes ▶ Meals Service ▶ TeleCareLine 01895 556633
- Housing Services www.hillingdon.gov.uk/housing 01895 556666
- Substance Use and Misuse or Sexual Health 01895 250721
- Trading Standards www.hillingdon.gov.uk/tradingstandards 01895 250164

All other council enquiries (not listed above)
01895 250111

Hospitals

- Harefield Hospital 01895 823737
- Hillingdon Hospital 01895 238282
- Mount Vernon Hospital 01923 826111
- Northwick Park Hospital 020 8864 3232
- Watford General Hospital 01923 244366
- NHS 111
- Police and Fire**
- Metropolitan Police Non-emergency 101 Textphone 18001 101
- Hillingdon Neighbourhood Watch all@hillingdonnhw.co.uk
- Hillingdon Fire Station 020 8555 1200

UXBRIDGECOLLEGE.AC.UK

OPEN DAYS

WED 10 NOV
UXBRIDGE
CAMPUS
3 - 8PM

Courses for School Leavers
A Levels & Sixth Form Centre
T Levels
HE Courses with West London IoT
Apprenticeships
Courses for Adults.

WED 24 NOV
HAYES
CAMPUS
3 - 7PM

Apprenticeships Music
Beauty Therapy Performing Arts
Childcare Professional
Computing Cookery &
Dance Hospitality
ESOL & EFL Supported
Hairdressing Learning.



Discover course options, view facilities, get advice and more.

REGISTER NOW!

www.uxbridgecollege.ac.uk/opendays