

## HS2 in Hillingdon

March 2025

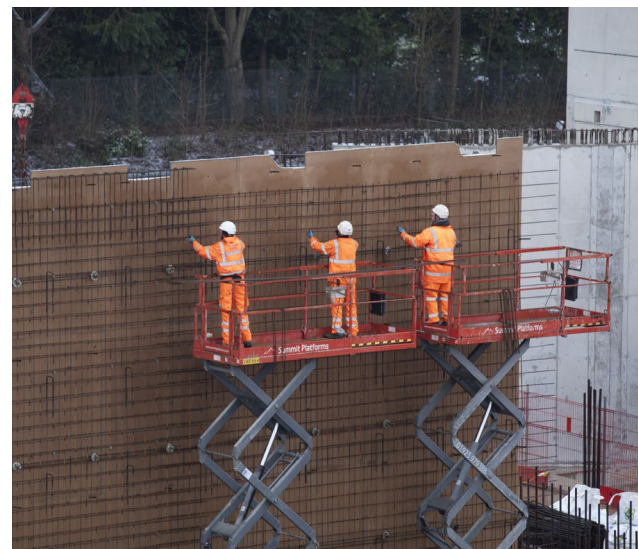
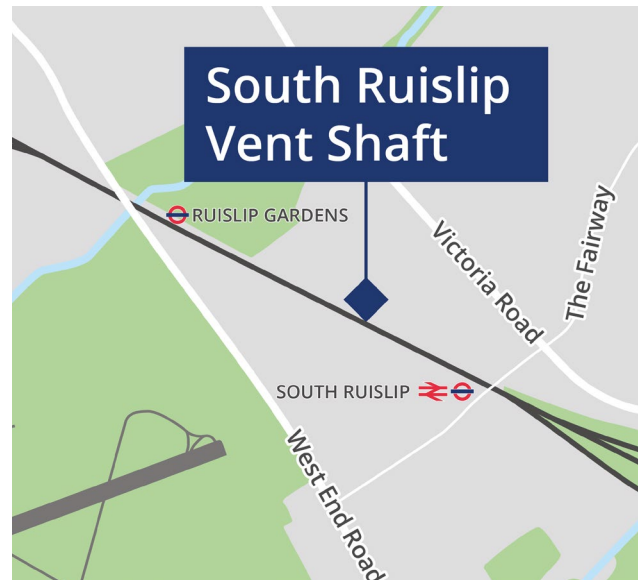
Welcome to the latest edition of our community newsletter. This edition contains an update on construction developments as well as an overview of our investment in local community initiatives.

### Construction Update

#### Works to build South Ruislip Headhouse

In 2025, we will continue works to build the headhouse at the South Ruislip Ventilation Shaft site. Works to build the headhouse include concreting, shuttering and steel fixing. These works are taking place during our core working hours, on Mondays to Fridays from 8am to 6pm and Saturdays from 8am to 1pm.

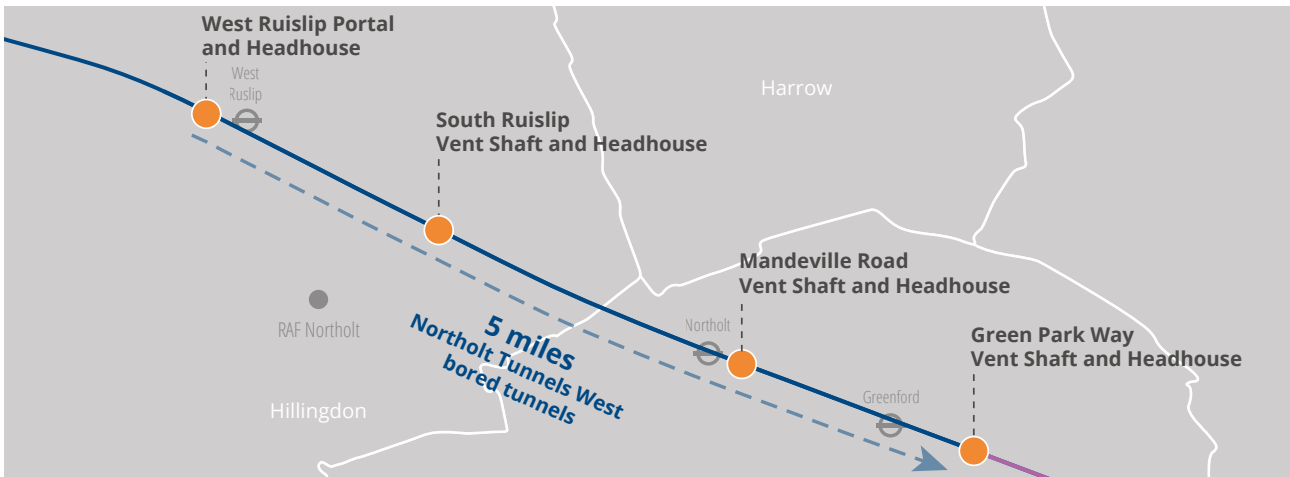
The headhouse is the building on top of the ventilation (vent) shaft. It contains fire control and ventilation systems for the railway tunnels below. The vent shaft is the vertical opening that connects the HS2 tunnels, 35 metres below the surface, to the open air. When completed, the headhouse will be between 10 and 14 metres high. As part of our works to build the headhouse, we will also build twin chimney stacks, a lift shaft and the foundation for an autotransformer station (ATS). The twin chimney stacks will be used for intake and exhaust for



Our team in action at the South Ruislip Vent Shaft

the tunnel ventilation system. The lift will connect to the tunnel emergency walkway and the stairs for the emergency services. We will install the ATS on the foundation slab to power the headhouse structure.





## Tunnelling works update

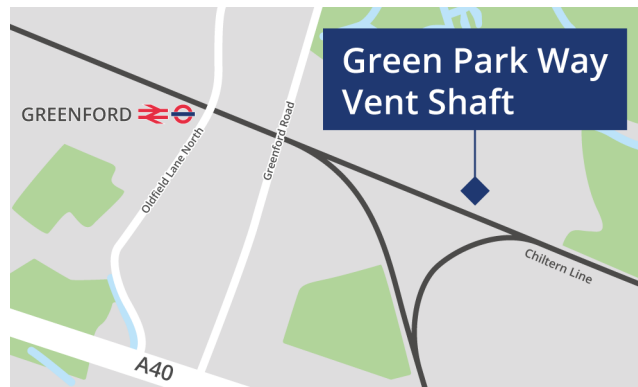
Tunnel Boring Machine (TBM) Sushila finished her tunnelling journey from West Ruislip to Green Park Way Vent Shaft in Greenford on 20 December 2024. This milestone marks the completion of the first TBM drive on the construction of the Northolt Tunnels. We expect TBM Caroline to reach Green Park Way in March 2025. The TBMs were launched

from the West Ruislip Portal in autumn 2022 and connect Hillingdon to Ealing on the HS2 route.

Sushila (the downline TBM) has built the tunnel for trains travelling from London to the West Midlands, and Caroline (the upline TBM) is building the tunnel for trains travelling from the West Midlands to London.



Our team celebrate the arrival of TBM Sushila at the Green Park Way Vent Shaft



## Demobilisation: Tunnelling

With both TBMs now finishing their journeys to Green Park Way, we have begun removing the services and infrastructure within the tunnels. Sushila and Caroline will now be dismantled into

smaller pieces and removed via the vent shaft at Green Park Way.

We will be very busy working on tunnelling demobilisation throughout 2025 and will closely monitor noise and dust levels throughout our works.

## West Ruislip Portal Headhouse and Roof Construction Works

We will be undertaking works throughout 2025 and early 2026 in preparation for building the headhouse and roof structure at the West Ruislip Portal. This is located in the area where the two Tunnel Boring Machines (TBMs) were launched. These works are the foundations for constructing the headhouse next year. The work will involve installing steel reinforcement, and concrete pours. There may be periods of increased noise during these works, however, we will monitor noise levels throughout. In 2026 residents will see works nearing completion for the headhouse frame.



The conveyor structure leaving the West Ruislip Portal on its way to the treatment area at Harvil Road

## Removing the Conveyor Structure: West Ruislip Portal

We have started dismantling and removing the conveyor structure by crane from the West Ruislip Portal entrance. We expect this work to finish in summer 2025.

The first phase of these works involved removing the conveyor structure from Sushila (downline TBM) and then out into the Tunnel Portal at West Ruislip. We will be repeating this process with Caroline

(upline TBM). Finally, all the remaining conveyor structure will be removed from the West Ruislip Portal to the treatment area at Harvil Road.

The conveyor has been operating 24 hours a day, transporting excavated material from the TBMs over the River Pinn and Breakspear Road South, and then across the Chiltern Line to the treatment area at Harvil Road. After treating, we have distributed it onto the mounds at the Southern Sustainable Placement Area, and the Copthall Tunnel.

## Upcoming works on Breakspear Road South

We will need to close Breakspear Road South 24 hours a day from 5 to 27 April 2025 while we carry out improvements to the drainage system. The work follows investigations we carried out last summer to plan the new drainage system.

During this period, we will replace the culvert and dig a trench across the road to install new drainage pipes. The road will be closed from south of the Network Rail bridge to north of the HS2 Bridge. A clearly marked diversion will be in place via Swakeleys Road B467, High Road B466, Ickenham Road, High Street, Bury Street A4180, and Breakspear Road. Local access to homes will be maintained to minimise inconvenience for residents.



## River Pinn Realignment completed

The River Pinn realignment works are now finished. This work took place between May and December 2024.

The scope of the works included:

- creating a new river alignment, including various aquatic features along the bed;

- a new green wall along the top of the river banks - for future support of the public rights of way;
- seeding and planting river edges and river banks; and
- constructing the abutments (structures that supports an arch or the end of a bridge) in preparation for installing the footbridge in 2025.

## Retained Embankment Earthworks

We are now in the final weeks of backfilling works on the Retained Embankments. The embankments stretch from east of the River Pinn HS2 bridge through to west of the Breakspear Road South HS2 bridge. This is the part of the HS2 route where trains will pass through as they leave the West Ruislip Portal and enter the Copthall Tunnel.

Heavy rainfall at the end of 2024 caused some challenges, but our team has made good progress in early 2025 and we are pleased to be back on course to finish the earthworks in spring 2025. Focus will then shift to landscaping. Once finished, residents will be able to see that the retained embankments are now level with the Chiltern Line.

## Significant progress made at Copthall Tunnel

The Copthall Tunnel team has had a busy start to 2025, doing a series of large concrete pours. As a result of the concrete pours, residents will see the roof slabs and ventilation shafts gaining height and taking shape. Copthall Tunnel is an 880m cut and cover tunnel between the Colne Valley Viaduct and Northolt Tunnel. It consists of two portal ends and five natural ventilation openings, each between 15 and 17 metres high. Our focus in 2025 will be to pour the two remaining roof slabs and construct the last ventilation shaft.



Work continues on the 880-metre-long Copthall Tunnel



The view from inside the Copthall Tunnel

# Community investment

## First Aid Training Session

At the end of 2024 we ran a first aid training session for the 3rd Hayes Brownie Group. This is part of a wider package of first aid training which our Community Engagement team has been providing to children in Hillingdon since 2023. We arranged the content of the sessions to ensure the children could obtain their First Aid badges. Topics included: How to call for help; Danger Awareness; First Aid Kit Contents; Recovery Position; and CPR and defibrillator familiarisation. Feedback was very positive and we look forward to continuing this important project across 2025.

## Community & Environment and Business & Local Economy Funds

In 2025 we will continue to offer two funds which are available to local communities and business between the West Midlands and London, to help with the disruption caused by our construction work. These are the Community and Environment Fund (CEF) and the Business and Local Economy Fund (BLEF).

The CEF is designed to give communities the opportunity to share in the benefits of HS2. It is a distributed fund which communities can apply for, to help to support local projects that aim to benefit their local area.

The BLEF is designed to support local economies that may be disrupted by the construction of HS2. BLEF grants are for local business support organisations and local authorities to help support business activity in local communities. To find out more, use the QR code on this page.

## More CEF awards announced in Hillingdon

We have recently announced several new CEF awards in the borough of Hillingdon.

### Hillingdon Fencing Club

We have awarded £5,353 to Hillingdon Fencing Club. They will use these funds to purchase a full plastic sword set which includes masks, tabards and plastic foil swords. They will also buy some new club kit, including jackets, gloves and chest protectors. This will ensure that those who are interested can join the club and use the shared kit to keep the costs of participation affordable for all.

### 4<sup>th</sup> Eastcote Scout Group

We have awarded £10,119 to 4<sup>th</sup> Eastcote Scout Group, who will use this funding to improve the group's facilities. They will be replacing the scout hut doors, as well as installing a mesh gas cylinder storage cage and buying a new lawn mower. They will also be investing in new camping equipment.

To find out more,  
please use the QR  
code on this page.



## Improving the river: Yeading Brook West

We have announced an award of £59,000 to Hillingdon Council to improve the form and function of the Yeading Brook West where it flows through Bridgwater Open Space. The council will use this funding to improve the channel by adding meanders, as well as creating a two-stage channel system. They will also invest in managing vegetation in overshadowed areas. This will make the river more visible and accessible for the local community and it will also improve biodiversity, flood resilience and water quality.

## Public drop in sessions

### Evening Sessions at the Visitor Information Centre

In November and December 2024 we opened our Visitor Information Centre for two evening sessions from 6-8pm. This was part of our commitment to ensuring that as many people as possible can come and talk to our Community Engagement team in person and give us their thoughts and feedback on HS2 in the Hillingdon area. We will be running the evening sessions again in the summer and will send out further information nearer the time.

We continue to run our drop-in sessions every Monday and Wednesday 2-4pm. You can find us to the right of the entrance to the HS2 West Ruislip Portal site. From the West Ruislip tube station entrance/exit, cross the road and turn right until you reach the 'West Ruislip Portal' sign.

### Community Event at Ruislip Rugby Football Club

On Tuesday 25 February 2025 we hosted a community event at Ruislip Rugby Football Club. We were pleased to have the opportunity to present information to residents on a wide range of topics, which included: Tunnelling demobilisation and related activities; Noise barrier construction from Copthall Tunnel to the West Ruislip Portal; and upcoming works around Breakspear Road South site.

We also showed recent drone footage of all major work sites in order to give a construction overview. We were pleased to welcome 89 visitors to the event and feedback was very positive. Please look out for further events in your area by regularly checking this link: <https://www.hs2.org.uk/in-your-area/local-community-webpages/hs2-in-hillingdon/>



Our Community Engagement team meeting residents at Ruislip Rugby Football Club

### The Newsletter: Have your say

We strive to make our newsletters informative, interesting and inclusive. We are always looking for ways to improve the content, so would welcome your feedback. If you have any views on the newsletter or if there are topics you would like to see covered in future editions, please contact us with your suggestions at: [communities@scsrailways.co.uk](mailto:communities@scsrailways.co.uk)

# Keeping you informed

We are committed to keeping you informed about work on HS2. This includes ensuring you know what to expect and when to expect it, as well as how we can help.

## Residents' Charter and Commissioner

The Residents' Charter is our promise to communicate as clearly as we possibly can with people who live along or near the HS2 route. [www.gov.uk/government/publications/hs2-residents-charter](http://www.gov.uk/government/publications/hs2-residents-charter)

We also have an independent Residents' Commissioner whose job is to make sure we keep to the promises we make in the Charter and to keep it under constant review. Find reports at: [www.gov.uk/government/collections/hs2-ltdresidents-commissioner](http://www.gov.uk/government/collections/hs2-ltdresidents-commissioner)

You can contact the Commissioner at: [\*\*residentscommissioner@hs2.org.uk\*\*](mailto:residentscommissioner@hs2.org.uk)

## Construction Commissioner

The Construction Commissioner's role is to mediate and monitor the way in which HS2 Ltd manages and responds to construction complaints. You can contact the Construction Commissioner by emailing: [\*\*complaints@hs2-cc.org.uk\*\*](mailto:complaints@hs2-cc.org.uk)

## Property and compensation

You can find out all about HS2 and properties along the line of route by visiting: [\*\*www.gov.uk/government/collections/hs2-property\*\*](http://www.gov.uk/government/collections/hs2-property)  
Find out if you're eligible for compensation at: [\*\*www.gov.uk/claim-compensation-if-affected-by-hs2\*\*](http://www.gov.uk/claim-compensation-if-affected-by-hs2)

## Holding us to account

If you are unhappy for any reason you can make a complaint by contacting our HS2 Helpdesk team. For more details on our complaints process, please visit our website: [\*\*www.hs2.org.uk/how-to-complain\*\*](http://www.hs2.org.uk/how-to-complain)

**Reference number: HS2-EW-SCS-Ph1-Ar-So-S2-CR-1-17/03/2025**

High Speed Two (HS2) Limited, registered in England and Wales.  
Registered office: Two Snowhill, Snow Hill Queensway, Birmingham B4 6GA.  
Company registration number: 06791686. VAT registration number: 181 4312 3

## Contact Us

Contact our HS2 Helpdesk team all day, every day of the year on:

 Freephone **08081 434 434**

 Minicom **08081 456 472**

 Email [\*\*hs2enquiries@hs2.org.uk\*\*](mailto:hs2enquiries@hs2.org.uk)

Write to:  
**FREEPOST  
HS2 Community Engagement**

Website [\*\*www.hs2.org.uk\*\*](http://www.hs2.org.uk)

To keep up to date with what is happening in your local area, visit: [\*\*www.hs2.org.uk/in-your-area/local-community-webpages/hs2-in-hillingdon\*\*](http://www.hs2.org.uk/in-your-area/local-community-webpages/hs2-in-hillingdon)

**Please contact us if you'd like a free copy of this document in large print, Braille, audio or easy read. You can also contact us for help and information in a different language.**

HS2 Ltd is committed to protecting personal information. If you wish to know more about how we use your personal information please see our Privacy Notice: <https://www.gov.uk/government/publications/high-speed-two-ltd-privacy-notice>