

LONDON BOROUGH OF HILLINGDON  
 THE HILLINGDON (WAITING AND LOADING RESTRICTION)  
 (CONSOLIDATION) ORDER 1994 (AMENDMENT) ORDER 2018  
 THE HILLINGDON (UXBRIDGE ROAD) (STOP AND SHOP SCHEME, ZONE UR)  
 (ON STREET PARKING PLACES) ORDER 2018  
 THE HILLINGDON (PARKING PLACES) (CONSOLIDATION)  
 ORDER 1994 (AMENDMENT) ORDER 2018

Hillingdon Council gives notice that it proposes to make these Orders which will:

**1. Install a 'Stop & Shop' parking scheme on the section of Uxbridge Road, Hayes between the junctions of Lansbury Drive and Warley Road with the following operational aspects:**

- i) Install four pay & display parking bays outside Nos. 774 to 786 Uxbridge Road operational 'Monday to Saturday 8am to 6.30pm' with charges as shown below.
- ii) Install five pay & display parking bays outside Nos. 874 to 862 Uxbridge Road operational 'Monday to Saturday 9.30am to 6.30pm' with charges as shown below and waiting restrictions operational between 'Monday to Saturday 8am to 9.30am'.
- iii) Retain goods vehicle loading bay outside Nos. 878 to 884 Uxbridge Road.
- iv) Install two pay & display parking bays outside Nos. 886 to 892 Uxbridge Road operational 'Monday to Saturday 9.30am to 6.30pm' with charges as shown below and waiting restrictions operational between 'Monday to Saturday 8am to 9.30am'.
- v) Install six pay & display parking bays outside Nos 898 to 928 Uxbridge Road operational 'Monday to Saturday 9.30am to 6.30pm' with charges as shown below and waiting restrictions operational between 'Monday to Saturday 8am to 9.30am'.
- vi) Install four pay & display parking bays outside Nos. 950 to 970 Uxbridge Road operational 'Monday to Saturday 8am to 6.30pm' with charges as shown below.
- vii) Install five pay & display parking bays outside Nos. 996 to 1034 Uxbridge Road operational 'Monday to Saturday 8am to 6.30pm' with charges as shown below.
- viii) Install various sections of double yellow lines to prevent obstructive parking and promote road safety.

**2. Remove the existing disabled parking bays opposite Nos. 131 to 134 High Street, Uxbridge to facilitate a new Dial-a-Ride bus stop. Relocate three disabled parking bays to opposite Nos. 137 to 140 High Street, Uxbridge.**

<b>CHARGES FOR THE PROPOSED PAY &amp; DISPLAY PARKING BAYS ON UXBRIDGE ROAD, HAYES BETWEEN LANSBURY DRIVE AND WARLEY ROAD</b>		
Parking Period	Standard Charge	HillingdonFirst Cardholder Tariff
30 minutes	Free(on displaying a ticket)	Free(on displaying a ticket)
60 minutes	70p	20p
90 minutes	£1.40	40p
Up to 2 hours	£2.10	60p

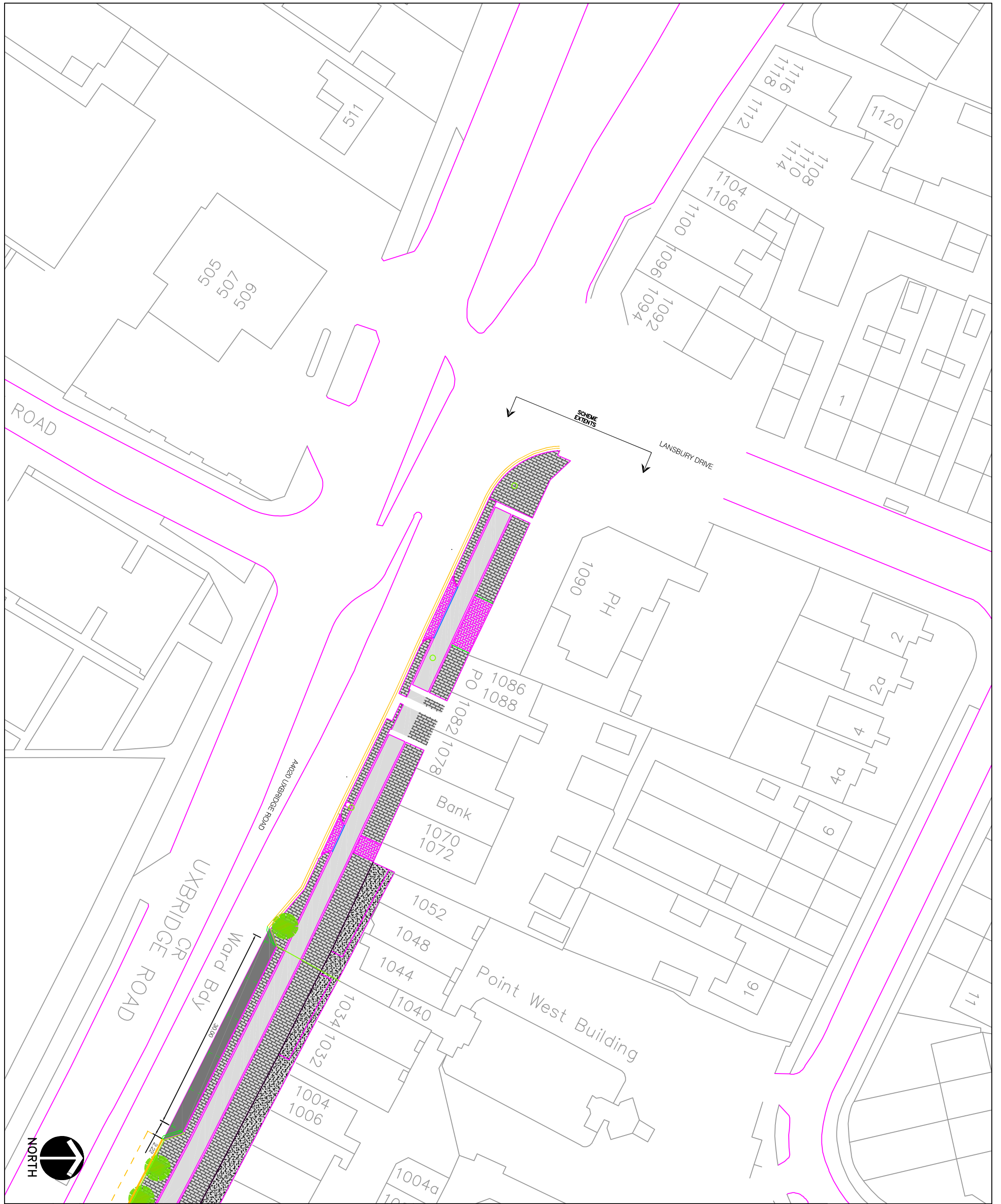
Copies of the notice of proposals, proposed Orders together with full details, plans and the Council's statement of reasons for the proposals can be seen at Uxbridge and Yeading libraries and by appointment at, Civic Centre, Uxbridge during normal office hours until 21<sup>st</sup> February 2018. Further information can be obtained by telephoning Residents Services on 01895 250461. If you wish to comment on, or object to the proposals please write by 21<sup>st</sup> February 2018, stating grounds for objection and your home address to Transport & Projects, Residents Services, Civic Centre, Uxbridge, Middlesex UB8 1UW quoting reference 3N/04/HT/31/01/18. Dated this the 31<sup>st</sup> day of January 2018.

JEAN PALMER,  
 Deputy Chief Executive & Corporate Director of Residents Services.

**STATEMENT OF REASONS**

The proposed scheme on Uxbridge Road responds to businesses request for parking controls and forms part of the improvements to the area.

The proposed amendments on High Street, Uxbridge will accommodate the new public realm improvements, which have already undergone public consultation with local residents and businesses and received the full support of the Uxbridge North and Uxbridge South Ward Councillors.



**KEY**

	EXISTING YELLOW LINE
	NEW SINGLE YELLOW LINE & TERMINAL
	NEW DOUBLE YELLOW LINE & TERMINAL

This map is based upon Ordnance Survey material with the permission of Ordnance Survey on behalf of the Controller of Her Majesty's Stationery Office. Crown copyright. Unauthorised reproduction infringes Crown copyright and may lead to prosecution or civil proceedings.  
 London Borough of Hillingdon 1000192833 © 2009

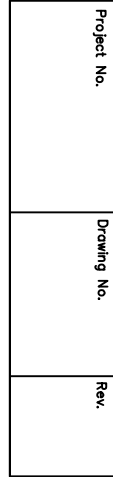
**HILLINGDON**  
LONDON

TRAFFIC MANAGEMENT  
ENVIRONMENT AND CONSUMER PROTECTION GROUP  
OWC CENTRE, 40/42, HIGH STREET, UXBURGE, URB 11W  
Tel No. 01895 27000/01895 25010

**Project**  
Uxbridge Road,  
Hayes

**Description**  
Proposed 'Stop  
& Shop'  
Parking Scheme

<b>Scale</b> 1:500	<b>Designed</b>	<b>Drawn</b>	<b>Date</b> Jan 18
<b>Project No.</b>	<b>Drawing No.</b>		<b>Rev.</b>





**KEY**

	EXISTING YELLOW LINE
	LOADING ONLY
	DISABLED
	NEW SINGLE YELLOW LINE & TERMINAL
	NEW DOUBLE YELLOW LINE & TERMINAL

This map is based upon Ordnance Survey material with the permission of Ordnance Survey on behalf of the Controller of Her Majesty's Stationary Office. Crown copyright. Unauthorised reproduction infringes Crown copyright and may lead to prosecution or civil proceedings.  
 London Borough of Hillingdon 1000192833 ©2009

**HILLINGDON**  
 LONDON

TRAFFIC MANAGEMENT  
 ENVIRONMENT AND CONSUMER PROTECTION GROUP  
 OMC CENTRE, 40/02, HIGH STREET, UXPAGE, UB8 1UW  
 Tel No: 01895 27100/01895 250919

**Project**  
 Uxbridge Road,  
 Hayes

**Description**  
 Proposed 'Stop  
 & Shop'  
 Parking Scheme

<b>Scale</b> 1:500	<b>Designed</b>	<b>Drawn</b>	<b>Date</b> Jan 18
<b>Project No.</b>	<b>Drawing No.</b>	<b>Rev.</b>	



**KEY**

- EXISTING YELLOW LINE
- NEW SINGLE YELLOW LINE & TERMINAL
- NEW DOUBLE YELLOW LINE & TERMINAL

This map is based upon Ordnance Survey material with the permission of Ordnance Survey on behalf of the Controller of Her Majesty's Stationery Office. Crown copyright. Unauthorised reproduction infringes Crown copyright and may lead to prosecution or civil proceedings.

London Borough of Hillingdon 1000192833 ©2009

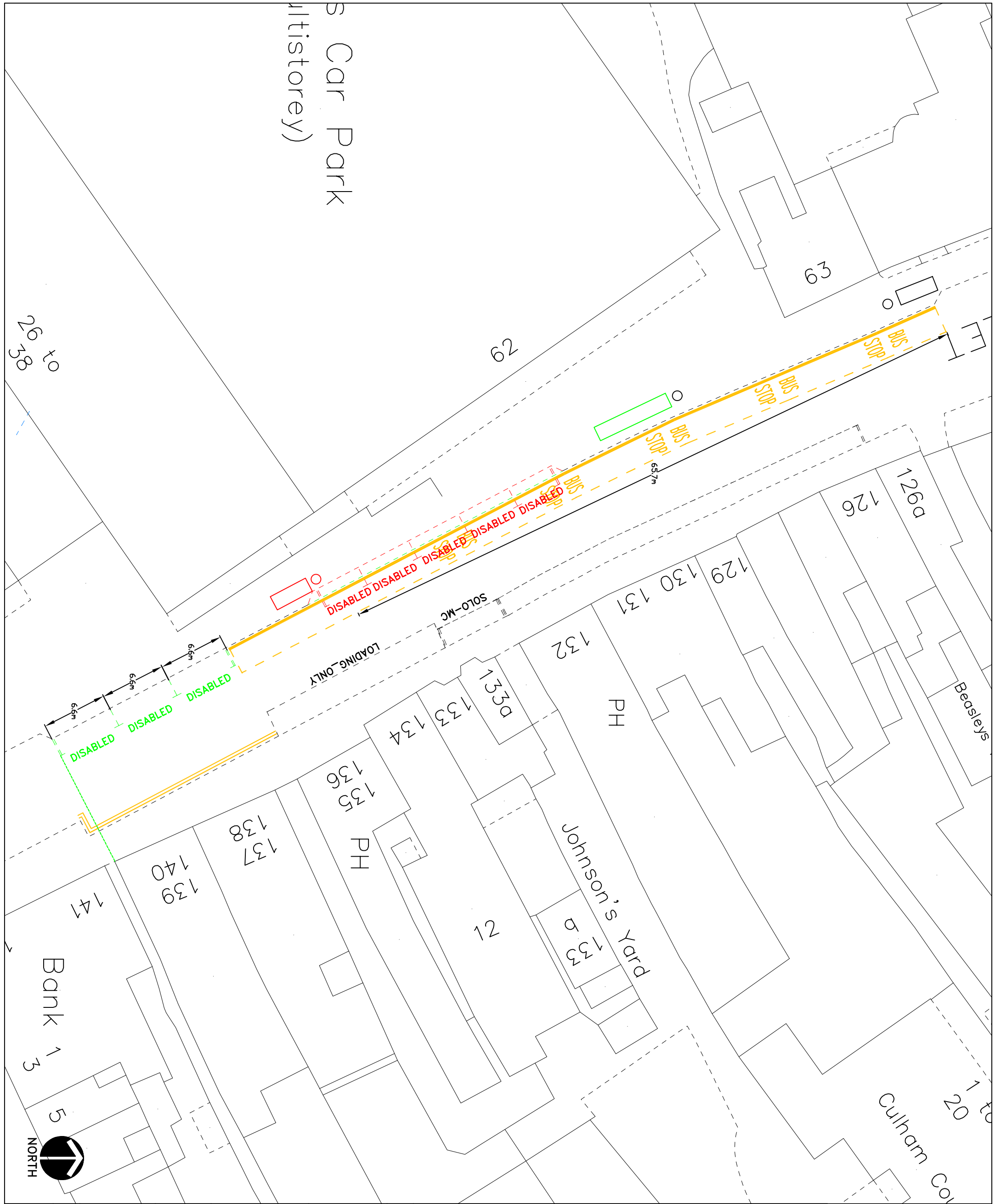
**HILLINGDON**  
LONDON

TRAFFIC MANAGEMENT  
ENVIRONMENT AND CONSUMER PROTECTION GROUP  
OWC CENTRE, 40/03, HIGH STREET, UXBIDGE, URB 11W  
Tel No. 01895 277000/01895 255915

**Project**  
Uxbridge Road,  
Hayes

**Description**  
Proposed 'Stop  
& Shop'  
Parking Scheme

<b>Scale</b> 1:500(A3)	<b>Designed</b>	<b>Drawn</b>	<b>Date</b> Jan 18
<b>Project No.</b>	<b>Drawing No.</b>	<b>Rev.</b>	



**KEY**  
 Removal of Existing Parking Place  
 New Disabled Parking Place

This map is based upon Ordnance Survey material with the permission of Ordnance Survey on behalf of the Controller of Her Majesty's Stationery Office. Crown copyright. Unauthorised reproduction infringes Crown copyright and may lead to prosecution or civil proceedings.  
 London Borough of Hillingdon 1000192833 © 2009

**HILLINGDON**  
 LONDON  
 TRAFFIC MANAGEMENT  
 ENVIRONMENT AND CONSUMER PROTECTION GROUP  
 OMC CENTRE, 46/45, HIGH STREET, UXPBRIDGE, UBA 1 1JW  
 Tel No. 01895 27000/9180 25010

**Project**  
 UXBRIDGE TOWN CENTRE  
 IMPROVEMENTS

**Description**  
 High Street, Uxbridge  
 Disabled Bay & Bus Stop  
 Relocation

<b>Scale</b> NTS	<b>Designed</b>	<b>Drawn</b>	<b>Date</b> DEC 2017
<b>Project No.</b>	<b>Drawing No.</b>	<b>Rev.</b>	