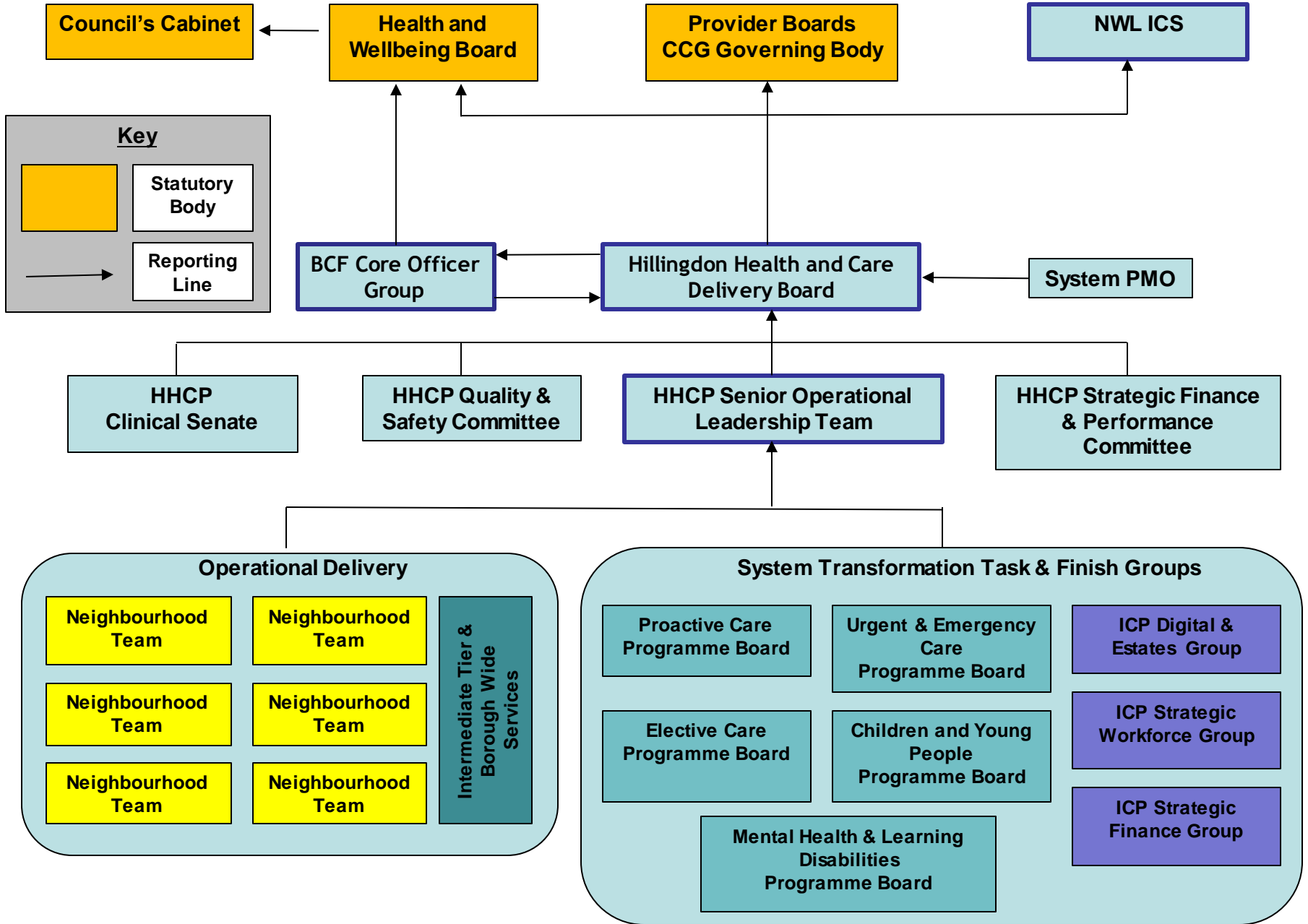


Place-based Governance, 2020/21



Governance Arrangements Summary

Health and Wellbeing Board

- This has a statutory responsibility for developing a strategic approach for improving health and wellbeing in Hillingdon.
- It is chaired by an elected member of the Council who is also the Cabinet Member for Social Care, Health and Wellbeing.
- The chair of HCCG's Governing Body is a statutory member.
- Executive representatives of NHS providers also sit on the Board.
- Healthwatch Hillingdon is a statutory member.
- The Board meets quarterly.

HHCP Health and Care Delivery Board

- This is the principal strategic setting and decision making body of Hillingdon's Integrated Care Partnership (ICP).
- Its membership includes executive leads from each ICP member, the Council's Social Care Director and Healthwatch Hillingdon.
- The Board has delegated responsibility for the development and delivery of the ICP programme.
- The Board meets monthly and holds a range of sub-groups to account for the delivery of the programme.
- The Board is accountable to the sovereign boards of its constituent members and links into the Health and Wellbeing Board.

Governance Arrangements Summary

Senior Operational Leadership Team (SOLT)

- This group has day to day operational responsibility for the services within the scope of the ICP.
- Its membership includes senior operational leads from organisations within the ICP as well as representation from the Council and the CCG.
- It meets on a monthly basis and is accountable to the Health and Care Delivery Board.

BCF Core Officer Group

- This group is responsible for overseeing the BCF delivery plan and pooled budget.
- Another function is to explore collaborative commissioning opportunities.
- Its membership includes executive representation from the Council and the CCG.
- It reports into the Health and Care Delivery Board but its members are accountable to either the Council's Cabinet or the CCG's Governing Body, depending on they are employed by.
- This group meets monthly.

System Transformation Task & Finish Groups

Task and finish groups reflect the key workstreams and key enablers essential to the delivery of system transformation. The scope of some of these groups mean that they have time-limited task and finish sub-groups reporting into them.