

<b>Building Name/No:</b>	Apollo House	<b>Serial No:</b>	297
<b>Address:</b>	<b>120 Blyth Road, Hayes, UB3 1SY</b>		
<b>Ward:</b>	Botwell	<b>Use:</b>	Warehouse (Proposed mixed use)

**Photograph**



**Statement of significance/Reasons for designation**

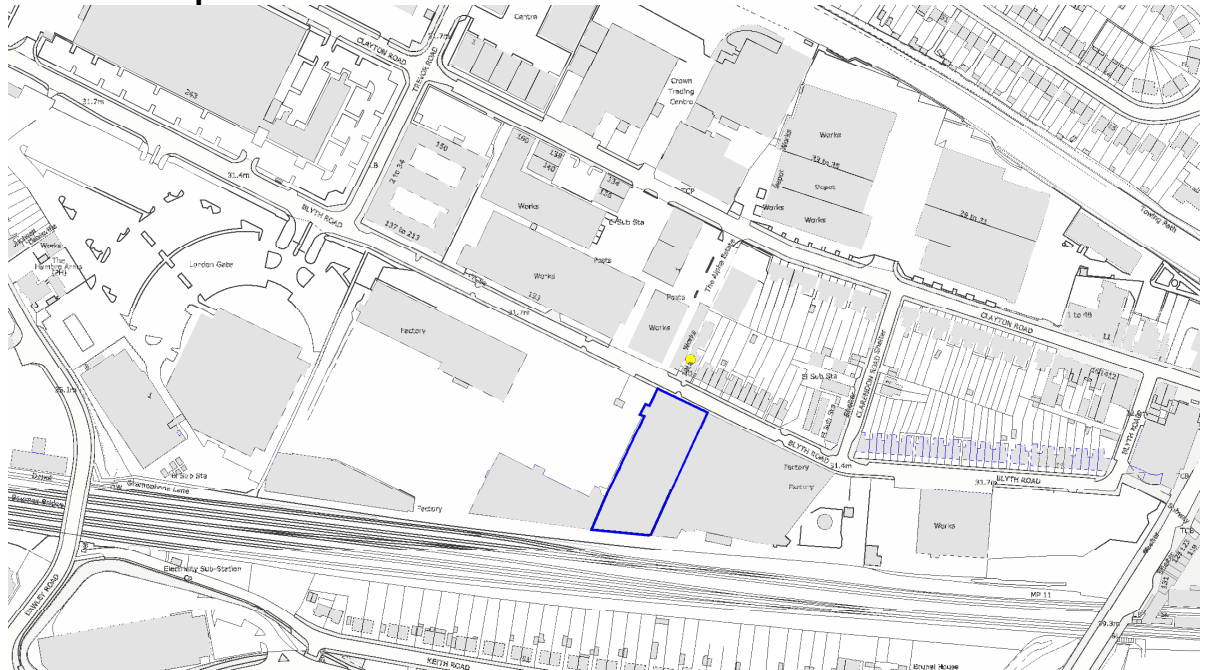
Architectural: Mainly constructed in 1928, three stories in yellow buff brick, with brick piers and extensive glazing. The main façade is a prominent feature on Blyth Road. Northern elevation and part southern elevation are of particular interest, whereas remaining parts are of relatively low significance.

Townscape: Key landmark and contributes to the street scene.

Historic: Associated with the industrial history of the Borough.

**Photograph date: December 2010**

**Location Map**



© Crown copyright. London Borough of Hillingdon 100019283 2011

Authenticity (I c): 1; Architectural (II d): 2; Townscape (III g): 1; Historic (IV h): 2

**Total = 6**

**Included in the Local List**